

**ITGA6 Antibody (monoclonal) (M01)****Mouse monoclonal antibody raised against a partial recombinant ITGA6.****Catalog # AT2565a****Specification**

---

**ITGA6 Antibody (monoclonal) (M01) - Product Information**

Application	WB, E
Primary Accession	<a href="#">P23229</a>
Other Accession	<a href="#">NM_000210</a>
Reactivity	Human
Host	mouse
Clonality	Monoclonal
Isotype	IgG2a Kappa
Calculated MW	126606

**ITGA6 Antibody (monoclonal) (M01) - Additional Information****Gene ID** 3655**Other Names**

Integrin alpha-6, CD49 antigen-like family member F, VLA-6, CD49f, Integrin alpha-6 heavy chain, Integrin alpha-6 light chain, Processed integrin alpha-6, Alpha6p, ITGA6

**Target/Specificity**

ITGA6 (NP\_000201, 24 a.a. ~ 133 a.a) partial recombinant protein with GST tag. MW of the GST tag alone is 26 KDa.

**Dilution**

WB~~1:500~1000

**Format**

Clear, colorless solution in phosphate buffered saline, pH 7.2 .

**Storage**

Store at -20°C or lower. Aliquot to avoid repeated freezing and thawing.

**Precautions**

ITGA6 Antibody (monoclonal) (M01) is for research use only and not for use in diagnostic or therapeutic procedures.

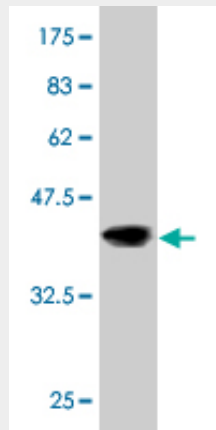
**ITGA6 Antibody (monoclonal) (M01) - Protocols**

Provided below are standard protocols that you may find useful for product applications.

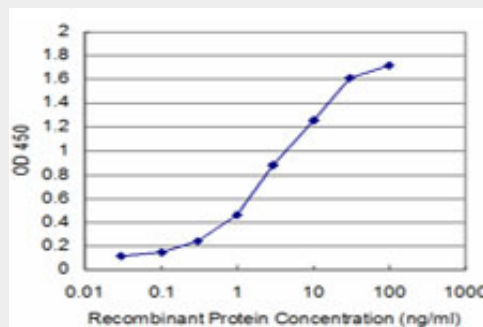
- [Western Blot](#)
- [Blocking Peptides](#)
- [Dot Blot](#)

- [Immunohistochemistry](#)
- [Immunofluorescence](#)
- [Immunoprecipitation](#)
- [Flow Cytometry](#)
- [Cell Culture](#)

### ITGA6 Antibody (monoclonal) (M01) - Images



Antibody Reactive Against Recombinant Protein. Western Blot detection against Immunogen (37.84 kDa) .



Detection limit for recombinant GST tagged ITGA6 is approximately 0.1ng/ml as a capture antibody.

### ITGA6 Antibody (monoclonal) (M01) - Background

The ITGA6 protein product is the integrin alpha chain alpha 6. Integrins are integral cell-surface proteins composed of an alpha chain and a beta chain. A given chain may combine with multiple partners resulting in different integrins. For example, alpha 6 may combine with beta 4 in the integrin referred to as TSP180, or with beta 1 in the integrin VLA-6. Integrins are known to participate in cell adhesion as well as cell-surface mediated signalling. Two transcript variants encoding different isoforms have been found for this gene.

### ITGA6 Antibody (monoclonal) (M01) - References

Evaluation of candidate stromal epithelial cross-talk genes identifies association between risk of serous ovarian cancer and TERT, a cancer susceptibility hot-spot. Johnatty SE, et al. PLoS Genet, 2010 Jul 8. PMID 20628624. Prostate cancer risk-associated variants reported from genome-wide association studies: Meta-analysis and their contribution to genetic Variation. Kim ST, et al. Prostate, 2010 Jun 16. PMID 20564319. alpha6-integrin subunit plays a major role in the proangiogenic properties of endothelial progenitor cells. Bouvard C, et al. Arterioscler Thromb Vasc Biol, 2010 Aug. PMID 20508204. Common polymorphisms in ITGA2, PON1 and THBS2 are associated

with coronary atherosclerosis in a candidate gene association study of the Chinese Han population. Wang Y, et al. J Hum Genet, 2010 Aug. PMID 20485444. Usage of heparan sulfate, integrins, and FAK in HPV16 infection. Abban CY, et al. Virology, 2010 Jul 20. PMID 20441998.