

**KCNF1 Antibody (monoclonal) (M01)****Mouse monoclonal antibody raised against a full length recombinant KCNF1.****Catalog # AT2595a****Specification**

---

**KCNF1 Antibody (monoclonal) (M01) - Product Information**

|                   |                          |
|-------------------|--------------------------|
| Application       | WB                       |
| Primary Accession | <a href="#">Q9H3M0</a>   |
| Other Accession   | <a href="#">BC026110</a> |
| Reactivity        | Human                    |
| Host              | mouse                    |
| Clonality         | Monoclonal               |
| Isotype           | IgG2a kappa              |
| Calculated MW     | 55584                    |

**KCNF1 Antibody (monoclonal) (M01) - Additional Information****Gene ID** 3754**Other Names**

Potassium voltage-gated channel subfamily F member 1, Voltage-gated potassium channel subunit Kv51, kH1, KCNF1

**Target/Specificity**

KCNF1 (AAH26110, 1 a.a. ~ 494 a.a) full-length recombinant protein with GST tag. MW of the GST tag alone is 26 KDa.

**Dilution**

WB~~1:500~1000

**Format**

Clear, colorless solution in phosphate buffered saline, pH 7.2 .

**Storage**

Store at -20°C or lower. Aliquot to avoid repeated freezing and thawing.

**Precautions**

KCNF1 Antibody (monoclonal) (M01) is for research use only and not for use in diagnostic or therapeutic procedures.

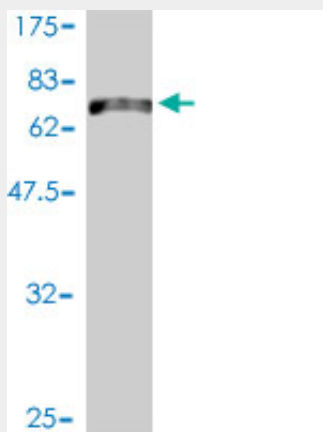
**KCNF1 Antibody (monoclonal) (M01) - Protocols**

Provided below are standard protocols that you may find useful for product applications.

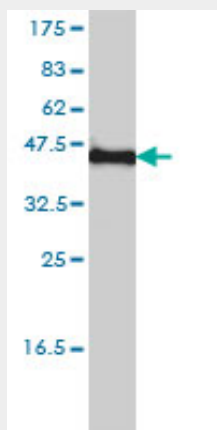
- [Western Blot](#)
- [Blocking Peptides](#)
- [Dot Blot](#)

- [Immunohistochemistry](#)
- [Immunofluorescence](#)
- [Immunoprecipitation](#)
- [Flow Cytometry](#)
- [Cell Culture](#)

### KCNF1 Antibody (monoclonal) (M01) - Images



Antibody Reactive Against Recombinant Protein. Western Blot detection against Immunogen (80.08 kDa) .



KCNF1 monoclonal antibody (M01), clone 1B2-7B6 Western Blot analysis of KCNF1 expression in Hela (Cat # AT2595a)

### KCNF1 Antibody (monoclonal) (M01) - Background

Voltage-gated potassium (Kv) channels represent the most complex class of voltage-gated ion channels from both functional and structural standpoints. Their diverse functions include regulating neurotransmitter release, heart rate, insulin secretion, neuronal excitability, epithelial electrolyte transport, smooth muscle contraction, and cell volume. This gene encodes a member of the potassium channel, voltage-gated, subfamily F. This gene is intronless and expressed in all tissues tested, including the heart, skeletal muscle, brain, kidney, and pancreas.

### KCNF1 Antibody (monoclonal) (M01) - References

Common genetic variation and performance on standardized cognitive tests. Cirulli ET, et al. Eur J Hum Genet, 2010 Jul. PMID 20125193. International Union of Pharmacology. LIII. Nomenclature and molecular relationships of voltage-gated potassium channels. Gutman GA, et al. Pharmacol Rev,

2005 Dec. PMID 16382104. The status, quality, and expansion of the NIH full-length cDNA project: the Mammalian Gene Collection (MGC). Gerhard DS, et al. Genome Res, 2004 Oct. PMID 15489334. Generation and initial analysis of more than 15,000 full-length human and mouse cDNA sequences. Strausberg RL, et al. Proc Natl Acad Sci U S A, 2002 Dec 24. PMID 12477932. Obligatory heterotetramerization of three previously uncharacterized Kv channel alpha-subunits identified in the human genome. Ottschytsch N, et al. Proc Natl Acad Sci U S A, 2002 Jun 11. PMID 12060745.