

KLF10 Antibody (monoclonal) (M02)

Mouse monoclonal antibody raised against a partial recombinant KLF10.

Catalog # AT2627a

Specification

KLF10 Antibody (monoclonal) (M02) - Product Information

Application	WB, IF
Primary Accession	O13118
Other Accession	BC011538
Reactivity	Human
Host	mouse
Clonality	Monoclonal
Isotype	IgG2b Kappa
Calculated MW	52555

KLF10 Antibody (monoclonal) (M02) - Additional Information

Gene ID 7071

Other Names

Krueppel-like factor 10, EGR-alpha, Transforming growth factor-beta-inducible early growth response protein 1, TGFB-inducible early growth response protein 1, TIEG-1, KLF10, TIEG, TIEG1

Target/Specificity

KLF10 (AAH11538.1, 1 a.a. ~ 110 a.a) partial recombinant protein with GST tag. MW of the GST tag alone is 26 KDa.

Dilution

WB~~1:500~1000

IF~~1:50~200

Format

Clear, colorless solution in phosphate buffered saline, pH 7.2 .

Storage

Store at -20°C or lower. Aliquot to avoid repeated freezing and thawing.

Precautions

KLF10 Antibody (monoclonal) (M02) is for research use only and not for use in diagnostic or therapeutic procedures.

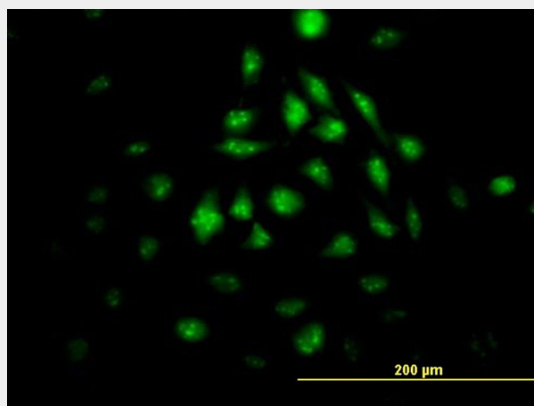
KLF10 Antibody (monoclonal) (M02) - Protocols

Provided below are standard protocols that you may find useful for product applications.

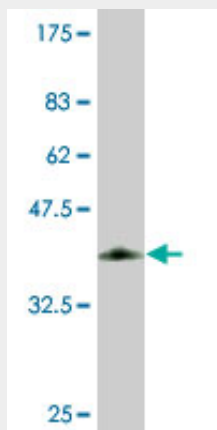
- [Western Blot](#)
- [Blocking Peptides](#)

- [Dot Blot](#)
- [Immunohistochemistry](#)
- [Immunofluorescence](#)
- [Immunoprecipitation](#)
- [Flow Cytometry](#)
- [Cell Culture](#)

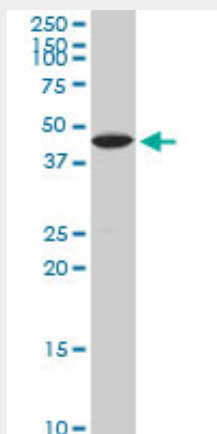
KLF10 Antibody (monoclonal) (M02) - Images



Immunofluorescence of monoclonal antibody to KLF10 on HeLa cell. [antibody concentration 10 ug/ml]



Antibody Reactive Against Recombinant Protein. Western Blot detection against Immunogen (37.73 KDa) .



KLF10 monoclonal antibody (M02), clone 4G9. Western Blot analysis of KLF10 expression in K-562((Cat # AT2627a)

KLF10 Antibody (monoclonal) (M02) - References

Evaluation of candidate stromal epithelial cross-talk genes identifies association between risk of serous ovarian cancer and TERT, a cancer susceptibility hot-spot. Johnatty SE, et al. PLoS Genet, 2010 Jul 8. PMID 20628624. Human variation in alcohol response is influenced by variation in neuronal signaling genes. Joslyn G, et al. Alcohol Clin Exp Res, 2010 May. PMID 20201926. Functional role of KLF10 in multiple disease processes. Subramaniam M, et al. Biofactors, 2010 Jan. PMID 20087894. High-density association study of 383 candidate genes for volumetric BMD at the femoral neck and lumbar spine among older men. Yerges LM, et al. J Bone Miner Res, 2009 Dec. PMID 19453261. Coeliac disease-associated risk variants in TNFAIP3 and REL implicate altered NF-kappaB signalling. Trynka G, et al. Gut, 2009 Aug. PMID 19240061.