

## **KLF11 Antibody (monoclonal) (M03)**

Mouse monoclonal antibody raised against a partial recombinant KLF11.

Catalog # AT2629a

### **Specification**

---

#### **KLF11 Antibody (monoclonal) (M03) - Product Information**

Application	IF, WB, IHC
Primary Accession	<a href="#">O14901</a>
Other Accession	<a href="#">NM_003597</a>
Reactivity	Human, Mouse
Host	mouse
Clonality	Monoclonal
Isotype	IgG2a Kappa
Calculated MW	55139

#### **KLF11 Antibody (monoclonal) (M03) - Additional Information**

**Gene ID** 8462

#### **Other Names**

Krueppel-like factor 11, Transforming growth factor-beta-inducible early growth response protein 2, TGFB-inducible early growth response protein 2, TIEG-2, KLF11, FKLf, TIEG2

#### **Target/Specificity**

KLF11 (NP\_003588, 404 a.a. ~ 512 a.a) partial recombinant protein with GST tag. MW of the GST tag alone is 26 KDa.

#### **Dilution**

WB~~1:500~1000

#### **Format**

Clear, colorless solution in phosphate buffered saline, pH 7.2 .

#### **Storage**

Store at -20°C or lower. Aliquot to avoid repeated freezing and thawing.

#### **Precautions**

KLF11 Antibody (monoclonal) (M03) is for research use only and not for use in diagnostic or therapeutic procedures.

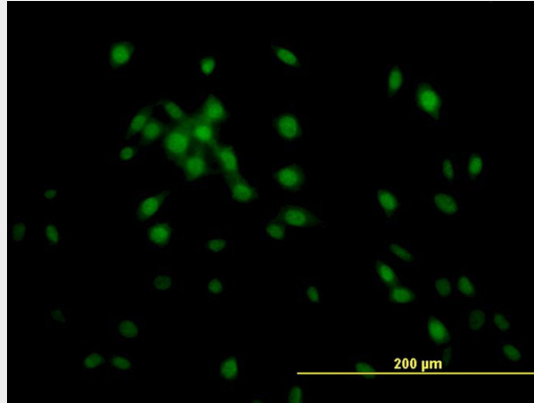
#### **KLF11 Antibody (monoclonal) (M03) - Protocols**

Provided below are standard protocols that you may find useful for product applications.

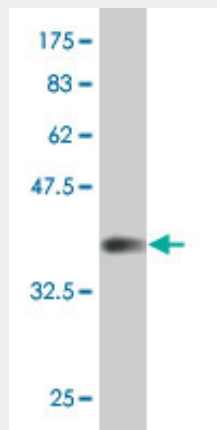
- [Western Blot](#)
- [Blocking Peptides](#)
- [Dot Blot](#)

- [Immunohistochemistry](#)
- [Immunofluorescence](#)
- [Immunoprecipitation](#)
- [Flow Cytometry](#)
- [Cell Culture](#)

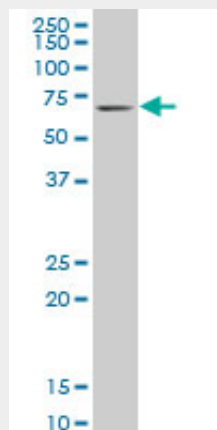
### KLF11 Antibody (monoclonal) (M03) - Images



Immunofluorescence of monoclonal antibody to KLF11 on NIH/3T3 cell. [antibody concentration 10 ug/ml]

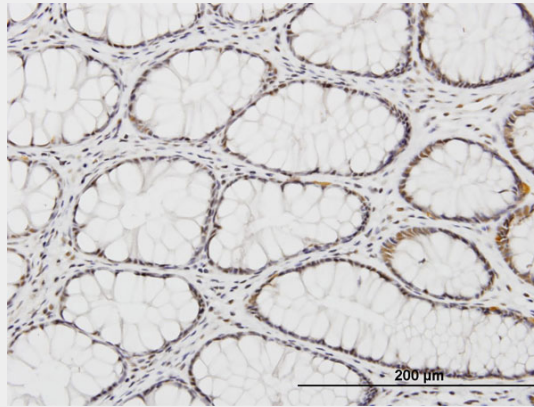


Antibody Reactive Against Recombinant Protein. Western Blot detection against Immunogen (37.73 KDa) .



KLF11 monoclonal antibody (M03), clone 10D8 Western Blot analysis of KLF11 expression in

NIH/3T3 ( (Cat # AT2629a )



Immunoperoxidase of monoclonal antibody to KLF11 on formalin-fixed paraffin-embedded human colon. [antibody concentration 3 ug/ml]

### **KLF11 Antibody (monoclonal) (M03) - Background**

The protein encoded by this gene is a zinc finger transcription factor that binds to SP1-like sequences in epsilon- and gamma-globin gene promoters. This binding inhibits cell growth and causes apoptosis. Defects in this gene are a cause of maturity-onset diabetes of the young type 7 (MODY7). Three transcript variants encoding two different isoforms have been found for this gene.

### **KLF11 Antibody (monoclonal) (M03) - References**

Distinct role of Kruppel-like factor 11 in the regulation of prostaglandin E2 biosynthesis. Buttar NS, et al. J Biol Chem, 2010 Apr 9. PMID 20154088. Transcription factor KLF11 integrates progesterone receptor signaling and proliferation in uterine leiomyoma cells. Yin P, et al. Cancer Res, 2010 Feb 15. PMID 20124487. Epigenetic inactivation of tumour suppressor gene KLF11 in myelodysplastic syndromes\*. Potapova A, et al. Eur J Haematol, 2010 Apr. PMID 20002157. MODY7 gene, KLF11, is a novel p300-dependent regulator of Pdx-1 (MODY4) transcription in pancreatic islet beta cells. Fernandez-Zapico ME, et al. J Biol Chem, 2009 Dec 25. PMID 19843526. Common genetic variation in candidate genes and susceptibility to subtypes of breast cancer. Mavaddat N, et al. Cancer Epidemiol Biomarkers Prev, 2009 Jan. PMID 19124506.