

KLF6 Antibody (monoclonal) (M02)**Mouse monoclonal antibody raised against a partial recombinant KLF6.****Catalog # AT2633a****Specification**

KLF6 Antibody (monoclonal) (M02) - Product Information

Application	IF, E
Primary Accession	Q99612
Other Accession	NM_001300
Reactivity	Human
Host	mouse
Clonality	Monoclonal
Isotype	IgG1 Kappa
Calculated MW	31865

KLF6 Antibody (monoclonal) (M02) - Additional Information**Gene ID** 1316**Other Names**

Krueppel-like factor 6, B-cell-derived protein 1, Core promoter element-binding protein, GC-rich sites-binding factor GBF, Proto-oncogene BCD1, Suppressor of tumorigenicity 12 protein, Transcription factor Zf9, KLF6, BCD1, COPEB, CPBP, ST12

Target/Specificity

KLF6 (NP_001291, 1 a.a. ~ 100 a.a) partial recombinant protein with GST tag. MW of the GST tag alone is 26 KDa.

Dilution

IF~~1:50~200

E~~N/A

Format

Clear, colorless solution in phosphate buffered saline, pH 7.2 .

Storage

Store at -20°C or lower. Aliquot to avoid repeated freezing and thawing.

Precautions

KLF6 Antibody (monoclonal) (M02) is for research use only and not for use in diagnostic or therapeutic procedures.

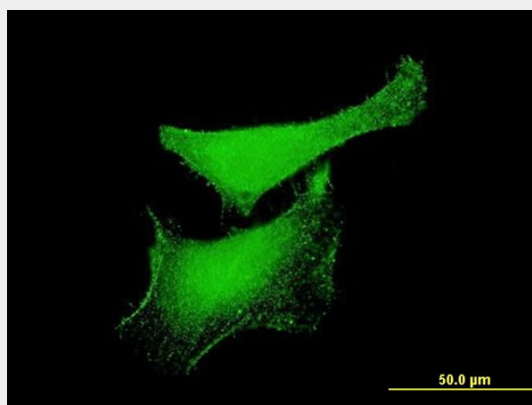
KLF6 Antibody (monoclonal) (M02) - Protocols

Provided below are standard protocols that you may find useful for product applications.

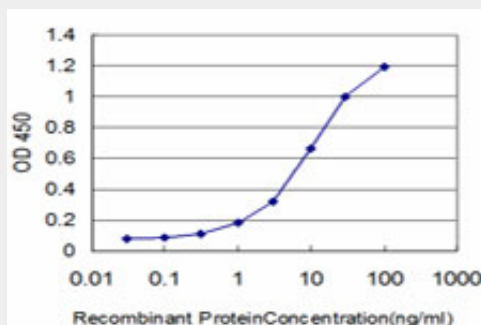
- [Western Blot](#)

- [Blocking Peptides](#)
- [Dot Blot](#)
- [Immunohistochemistry](#)
- [Immunofluorescence](#)
- [Immunoprecipitation](#)
- [Flow Cytometry](#)
- [Cell Culture](#)

KLF6 Antibody (monoclonal) (M02) - Images



Immunofluorescence of monoclonal antibody to KLF6 on HeLa cell . [antibody concentration 10 ug/ml]



Detection limit for recombinant GST tagged KLF6 is approximately 0.3ng/ml as a capture antibody.

KLF6 Antibody (monoclonal) (M02) - Background

This gene encodes a member of the Kruppel-like family of transcription factors. The zinc finger protein is a transcriptional activator, and functions as a tumor suppressor. Multiple transcript variants encoding different isoforms have been found for this gene, some of which are implicated in carcinogenesis.

KLF6 Antibody (monoclonal) (M02) - References

KLF6 Gene and early melanoma development in a collagen I-rich extracellular environment. Huh SJ, et al. J Natl Cancer Inst, 2010 Aug 4. PMID 20660366. A Large-scale genetic association study of esophageal adenocarcinoma risk. Liu CY, et al. Carcinogenesis, 2010 Jul. PMID 20453000. New genetic associations detected in a host response study to hepatitis B vaccine. Davila S, et al. Genes Immun, 2010 Apr. PMID 20237496. Nuclear expression of KLF6 tumor suppressor factor is highly associated with overexpression of ERBB2 oncoprotein in ductal breast carcinomas. Gehrau RC, et al. PLoS One, 2010 Jan 28. PMID 20126619. Tumor suppressor activity of KLF6 mediated by

downregulation of the PTTG1 oncogene. Lee UE, et al. FEBS Lett, 2010 Mar 5. PMID 20116377.