

KLF8 Antibody (monoclonal) (M09)**Mouse monoclonal antibody raised against a partial recombinant KLF8.****Catalog # AT2635a****Specification**

KLF8 Antibody (monoclonal) (M09) - Product Information

Application	WB, E
Primary Accession	O95600
Other Accession	NM_007250
Reactivity	Human
Host	mouse
Clonality	Monoclonal
Isotype	IgG2a Kappa
Calculated MW	39314

KLF8 Antibody (monoclonal) (M09) - Additional Information**Gene ID** 11279**Other Names**

Krueppel-like factor 8, Basic krueppel-like factor 3, Zinc finger protein 741, KLF8, BKLF3, ZNF741

Target/Specificity

KLF8 (NP_009181.1, 1 a.a. ~ 98 a.a) partial recombinant protein with GST tag. MW of the GST tag alone is 26 KDa.

Dilution

WB~~1:500~1000

E~~N/A

Format

Clear, colorless solution in phosphate buffered saline, pH 7.2 .

Storage

Store at -20°C or lower. Aliquot to avoid repeated freezing and thawing.

Precautions

KLF8 Antibody (monoclonal) (M09) is for research use only and not for use in diagnostic or therapeutic procedures.

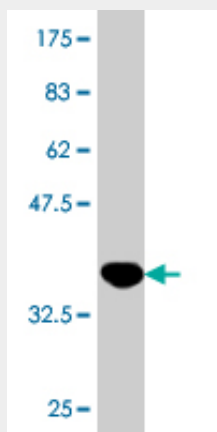
KLF8 Antibody (monoclonal) (M09) - Protocols

Provided below are standard protocols that you may find useful for product applications.

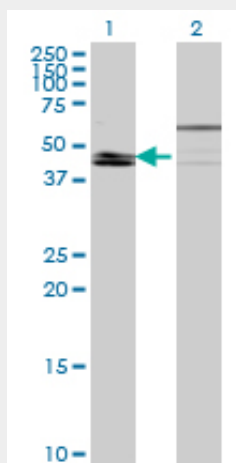
- [Western Blot](#)
- [Blocking Peptides](#)
- [Dot Blot](#)

- [Immunohistochemistry](#)
- [Immunofluorescence](#)
- [Immunoprecipitation](#)
- [Flow Cytometry](#)
- [Cell Culture](#)

KLF8 Antibody (monoclonal) (M09) - Images



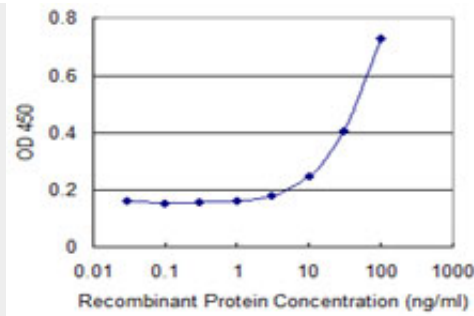
Antibody Reactive Against Recombinant Protein. Western Blot detection against Immunogen (36.52 KDa) .



Western Blot analysis of KLF8 expression in transfected 293T cell line by KLF8 monoclonal antibody (M09), clone 2E10.

Lane 1: KLF8 transfected lysate (39.3 KDa).

Lane 2: Non-transfected lysate.



Detection limit for recombinant GST tagged KLF8 is 3 ng/ml as a capture antibody.

KLF8 Antibody (monoclonal) (M09) - Background

This gene encodes a protein which is a member of the Sp/KLF family of transcription factors. Members of this family contain a C-terminal DNA-binding domain with three Kruppel-like zinc fingers. The encoded protein is thought to play an important role in the regulation of epithelial to mesenchymal transition, a process which occurs normally during development but also during metastasis. A pseudogene has been identified on chromosome 16. Alternative splicing results in multiple transcript variants.

KLF8 Antibody (monoclonal) (M09) - References

Small interference RNA targeting Kruppel-like factor 8 inhibits the renal carcinoma 786-0 cells growth in vitro and in vivo. Fu WJ, et al. J Cancer Res Clin Oncol, 2010 Aug. PMID 20182889. Activation of KLF8 transcription by focal adhesion kinase in human ovarian epithelial and cancer cells. Wang X, et al. J Biol Chem, 2008 May 16. PMID 18353772. Kruppel-like factor 8 induces epithelial to mesenchymal transition and epithelial cell invasion. Wang X, et al. Cancer Res, 2007 Aug 1. PMID 17671186. Systematic RNAi studies on the role of Sp/KLF factors in globin gene expression and erythroid differentiation. Hu JH, et al. J Mol Biol, 2007 Mar 2. PMID 17224162. KLF8 transcription factor participates in oncogenic transformation. Wang X, et al. Oncogene, 2007 Jan 18. PMID 16832343.