

KLF9 Antibody (monoclonal) (M01)**Mouse monoclonal antibody raised against a partial recombinant KLF9.****Catalog # AT2636a****Specification**

KLF9 Antibody (monoclonal) (M01) - Product Information

Application	WB, E
Primary Accession	Q13886
Other Accession	NM_001206
Reactivity	Human
Host	mouse
Clonality	Monoclonal
Isotype	IgG2a Kappa
Calculated MW	27235

KLF9 Antibody (monoclonal) (M01) - Additional Information**Gene ID** 687**Other Names**

Krueppel-like factor 9, Basic transcription element-binding protein 1, BTE-binding protein 1, GC-box-binding protein 1, Transcription factor BTEB1, KLF9, BTEB, BTEB1

Target/Specificity

KLF9 (NP_001197, 25 a.a. ~ 101 a.a) partial recombinant protein with GST tag. MW of the GST tag alone is 26 KDa.

Dilution

WB~~1:500~1000

E~~N/A

Format

Clear, colorless solution in phosphate buffered saline, pH 7.2 .

Storage

Store at -20°C or lower. Aliquot to avoid repeated freezing and thawing.

Precautions

KLF9 Antibody (monoclonal) (M01) is for research use only and not for use in diagnostic or therapeutic procedures.

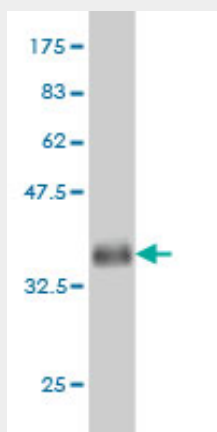
KLF9 Antibody (monoclonal) (M01) - Protocols

Provided below are standard protocols that you may find useful for product applications.

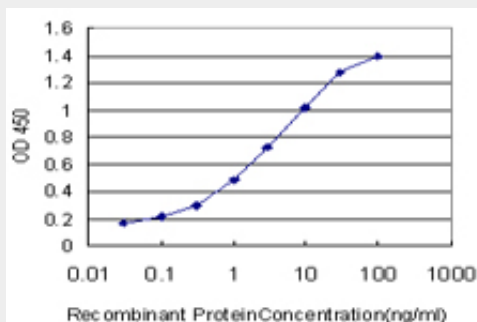
- [Western Blot](#)
- [Blocking Peptides](#)

- [Dot Blot](#)
- [Immunohistochemistry](#)
- [Immunofluorescence](#)
- [Immunoprecipitation](#)
- [Flow Cytometry](#)
- [Cell Culture](#)

KLF9 Antibody (monoclonal) (M01) - Images



Antibody Reactive Against Recombinant Protein. Western Blot detection against Immunogen (34.21 kDa) .



Detection limit for recombinant GST tagged KLF9 is approximately 0.03ng/ml as a capture antibody.

KLF9 Antibody (monoclonal) (M01) - Background

The protein encoded by this gene is a transcription factor that binds to GC box elements located in the promoter. Binding of the encoded protein to a single GC box inhibits mRNA expression while binding to tandemly repeated GC box elements activates transcription.

KLF9 Antibody (monoclonal) (M01) - References

Functional differentiation of uterine stromal cells involves cross-regulation between bone morphogenetic protein 2 and Kruppel-like factor (KLF) family members KLF9 and KLF13. Pabona JM, et al. Endocrinology, 2010 Jul. PMID 20410205. GAR22: a novel target gene of thyroid hormone receptor causes growth inhibition in human erythroid cells. Gamper I, et al. Exp Hematol, 2009 May. PMID 19375645. The Kruppel-like factor 9 (KLF9) network in HEC-1-A endometrial carcinoma cells suggests the carcinogenic potential of dys-regulated KLF9 expression. Simmen FA, et al. Reprod Biol Endocrinol, 2008 Sep 10. PMID 18783612. Downregulation of Kruppel-like factor 9 in human colorectal cancer. Kang L, et al. Pathol Int, 2008 Jun. PMID 18477211. Hepatocyte nuclear factor 4alpha contributes to thyroid hormone homeostasis by cooperatively regulating the type 1

iodothyronine deiodinase gene with GATA4 and Kruppel-like transcription factor 9. Ohguchi H, et al. Mol Cell Biol, 2008 Jun. PMID 18426912.