

KLK10 Antibody (monoclonal) (M01)**Mouse monoclonal antibody raised against a partial recombinant KLK10.****Catalog # AT2640a****Specification**

KLK10 Antibody (monoclonal) (M01) - Product Information

Application	WB, IF, E
Primary Accession	O43240
Other Accession	NM_002776
Reactivity	Human
Host	mouse
Clonality	Monoclonal
Isotype	IgG1 lambda
Calculated MW	30170

KLK10 Antibody (monoclonal) (M01) - Additional Information**Gene ID** 5655**Other Names**

Kallikrein-10, 3421-, Normal epithelial cell-specific 1, Protease serine-like 1, KLK10, NES1, PRSSL1

Target/Specificity

KLK10 (NP_002767, 167 a.a. ~ 276 a.a) partial recombinant protein with GST tag. MW of the GST tag alone is 26 KDa.

Dilution

WB~~1:500~1000

IF~~1:50~200

E~~N/A

Format

Clear, colorless solution in phosphate buffered saline, pH 7.2 .

Storage

Store at -20°C or lower. Aliquot to avoid repeated freezing and thawing.

Precautions

KLK10 Antibody (monoclonal) (M01) is for research use only and not for use in diagnostic or therapeutic procedures.

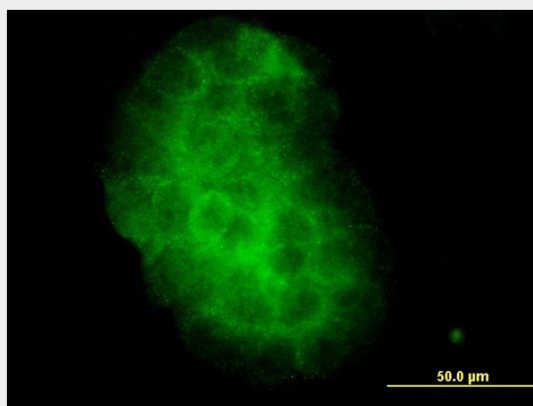
KLK10 Antibody (monoclonal) (M01) - Protocols

Provided below are standard protocols that you may find useful for product applications.

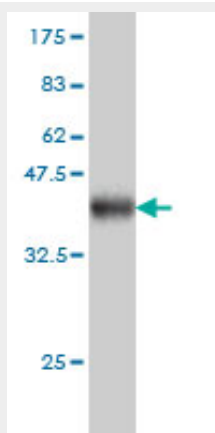
- [Western Blot](#)
- [Blocking Peptides](#)

- [Dot Blot](#)
- [Immunohistochemistry](#)
- [Immunofluorescence](#)
- [Immunoprecipitation](#)
- [Flow Cytometry](#)
- [Cell Culture](#)

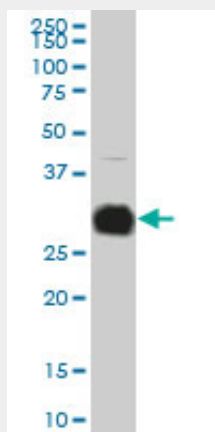
KLK10 Antibody (monoclonal) (M01) - Images



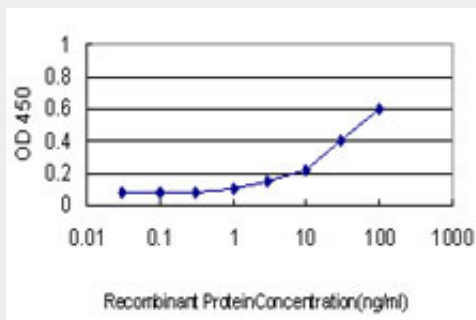
Immunofluorescence of monoclonal antibody to KLK10 on A-431 cell. [antibody concentration 10 ug/ml]



Antibody Reactive Against Recombinant Protein. Western Blot detection against Immunogen (37.84 KDa) .



KLK10 monoclonal antibody (M01), clone 1G8 Western Blot analysis of KLK10 expression in A-431((Cat # AT2640a)



Detection limit for recombinant GST tagged KLK10 is approximately 1ng/ml as a capture antibody.

KLK10 Antibody (monoclonal) (M01) - Background

Kallikreins are a subgroup of serine proteases having diverse physiological functions. Growing evidence suggests that many kallikreins are implicated in carcinogenesis and some have potential as novel cancer and other disease biomarkers. This gene is one of the fifteen kallikrein subfamily members located in a cluster on chromosome 19. Its encoded protein is secreted and may play a role in suppression of tumorigenesis in breast and prostate cancers. Alternate splicing of this gene results in multiple transcript variants encoding the same protein.

KLK10 Antibody (monoclonal) (M01) - References

Kallikrein-related peptidase 10 (KLK10) expression and single nucleotide polymorphisms in ovarian cancer survival. Batra J, et al. Int J Gynecol Cancer, 2010 May. PMID 20686372. Blood biomarker levels to aid discovery of cancer-related single-nucleotide polymorphisms: kallikreins and prostate cancer. Klein RJ, et al. Cancer Prev Res (Phila), 2010 May. PMID 20424135. Smad signaling is required to maintain epigenetic silencing during breast cancer progression. Papageorgis P, et al. Cancer Res, 2010 Feb 1. PMID 20086175. Aberrant DNA methylation profile and frequent methylation of KLK10 and OXGR1 genes in hepatocellular carcinoma. Lu CY, et al. Genes Chromosomes Cancer, 2009 Dec. PMID 19760608. The kallikrein family of proteins as urinary biomarkers for the detection of prostate cancer. Sardana G, et al. Clin Biochem, 2009 Sep. PMID 19560453.