

KLK6 Antibody (monoclonal) (M01)**Mouse monoclonal antibody raised against a partial recombinant KLK6.****Catalog # AT2641a****Specification**

KLK6 Antibody (monoclonal) (M01) - Product Information

Application	WB, E
Primary Accession	Q92876
Other Accession	BC015525
Reactivity	Human
Host	Mouse
Clonality	Monoclonal
Isotype	IgG2a Kappa
Calculated MW	26856

KLK6 Antibody (monoclonal) (M01) - Additional Information**Gene ID** 5653**Other Names**

Kallikrein-6, 3421-, Neurosin, Protease M, SP59, Serine protease 18, Serine protease 9, Zyme, KLK6, PRSS18, PRSS9

Target/Specificity

KLK6 (AAH15525, 91 a.a. ~ 190 a.a) partial recombinant protein with GST tag. MW of the GST tag alone is 26 KDa.

Dilution

WB~~1:500~1000

E~~N/A

Format

Clear, colorless solution in phosphate buffered saline, pH 7.2 .

Storage

Store at -20°C or lower. Aliquot to avoid repeated freezing and thawing.

Precautions

KLK6 Antibody (monoclonal) (M01) is for research use only and not for use in diagnostic or therapeutic procedures.

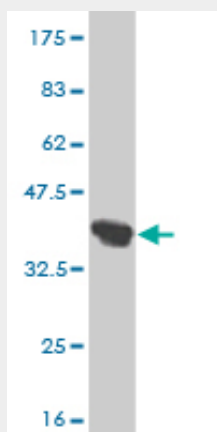
KLK6 Antibody (monoclonal) (M01) - Protocols

Provided below are standard protocols that you may find useful for product applications.

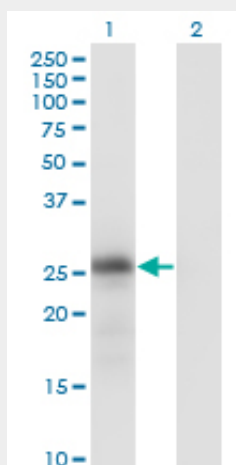
- [Western Blot](#)
- [Blocking Peptides](#)

- [Dot Blot](#)
- [Immunohistochemistry](#)
- [Immunofluorescence](#)
- [Immunoprecipitation](#)
- [Flow Cytometry](#)
- [Cell Culture](#)

KLK6 Antibody (monoclonal) (M01) - Images



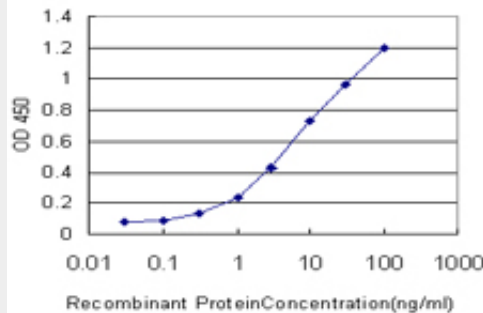
Antibody Reactive Against Recombinant Protein. Western Blot detection against Immunogen (36.63 kDa) .



Western Blot analysis of KLK6 expression in transfected 293T cell line by KLK6 monoclonal antibody (M01), clone 4A10.

Lane 1: KLK6 transfected lysate (26.9 kDa).

Lane 2: Non-transfected lysate.



Detection limit for recombinant GST tagged KLK6 is approximately 0.3ng/ml as a capture antibody.

KLK6 Antibody (monoclonal) (M01) - Background

Kallikreins are a subgroup of serine proteases having diverse physiological functions. Growing evidence suggests that many kallikreins are implicated in carcinogenesis and some have potential as novel cancer and other disease biomarkers. This gene is one of the fifteen kallikrein subfamily members located in a cluster on chromosome 19. The encoded enzyme is regulated by steroid hormones. In tissue culture, the enzyme has been found to generate amyloidogenic fragments from the amyloid precursor protein, suggesting a potential for involvement in Alzheimer's disease. Multiple alternatively spliced transcript variants that encode different isoforms have been identified for this gene.

KLK6 Antibody (monoclonal) (M01) - References

Polymorphisms in innate immunity genes and risk of childhood leukemia. Han S, et al. Hum Immunol, 2010 Jul. PMID 20438785. Blood biomarker levels to aid discovery of cancer-related single-nucleotide polymorphisms: kallikreins and prostate cancer. Klein RJ, et al. Cancer Prev Res (Phila), 2010 May. PMID 20424135. Risk of meningioma and common variation in genes related to innate immunity. Rajaraman P, et al. Cancer Epidemiol Biomarkers Prev, 2010 May. PMID 20406964. KLK6 and KLK13 predict tumor recurrence in epithelial ovarian carcinoma. White NM, et al. Br J Cancer, 2009 Oct 6. PMID 19707197. The kallikrein family of proteins as urinary biomarkers for the detection of prostate cancer. Sardana G, et al. Clin Biochem, 2009 Sep. PMID 19560453.