

KPNA1 Antibody (monoclonal) (M01)**Mouse monoclonal antibody raised against a full length recombinant KPNA1.****Catalog # AT2647a****Specification**

KPNA1 Antibody (monoclonal) (M01) - Product Information

Application	WB, IHC, E
Primary Accession	P52294
Other Accession	BC002374
Reactivity	Human
Host	mouse
Clonality	Monoclonal
Isotype	IgG1 Kappa
Calculated MW	60222

KPNA1 Antibody (monoclonal) (M01) - Additional Information**Gene ID** 3836**Other Names**

Importin subunit alpha-5, Karyopherin subunit alpha-1, Nucleoprotein interactor 1, NPI-1, RAG cohort protein 2, SRP1-beta, Importin subunit alpha-5, N-terminally processed, KPNA1, RCH2

Target/Specificity

KPNA1 (AAH02374.1, 1 a.a. ~ 538 a.a) full-length recombinant protein with GST tag. MW of the GST tag alone is 26 KDa.

Dilution

WB~~1:500~1000

IHC~~1:100~500

E~~N/A

Format

Clear, colorless solution in phosphate buffered saline, pH 7.2 .

Storage

Store at -20°C or lower. Aliquot to avoid repeated freezing and thawing.

Precautions

KPNA1 Antibody (monoclonal) (M01) is for research use only and not for use in diagnostic or therapeutic procedures.

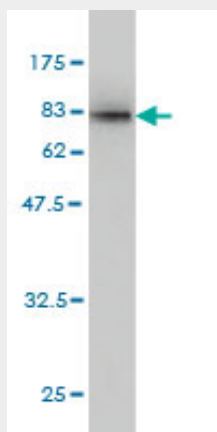
KPNA1 Antibody (monoclonal) (M01) - Protocols

Provided below are standard protocols that you may find useful for product applications.

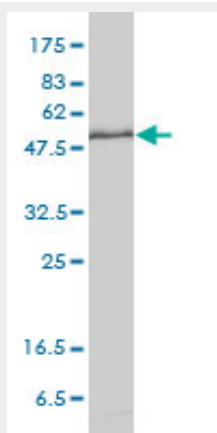
- [Western Blot](#)

- [Blocking Peptides](#)
- [Dot Blot](#)
- [Immunohistochemistry](#)
- [Immunofluorescence](#)
- [Immunoprecipitation](#)
- [Flow Cytometry](#)
- [Cell Culture](#)

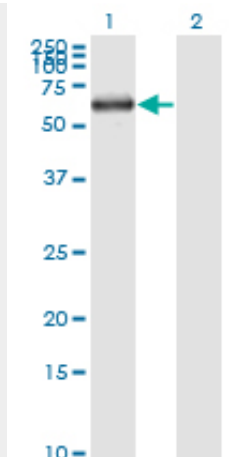
KPNA1 Antibody (monoclonal) (M01) - Images



Antibody Reactive Against Recombinant Protein. Western Blot detection against Immunogen (84.92 KDa) .



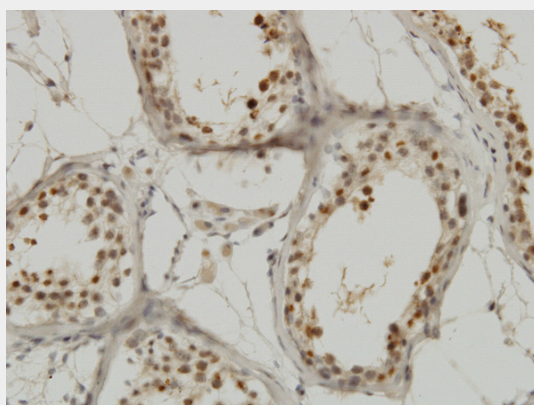
KPNA1 monoclonal antibody (M01), clone 2A4-1B5 Western Blot analysis of KPNA1 expression in HeLa (Cat # AT2647a)



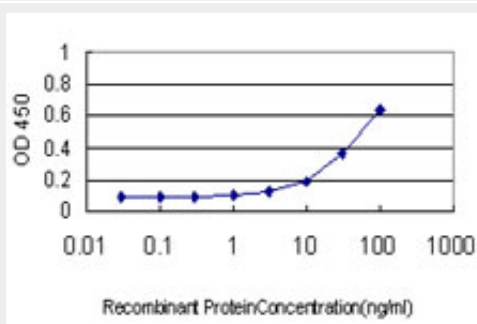
Western Blot analysis of KPNA1 expression in transfected 293T cell line by KPNA1 monoclonal antibody (M01), clone 2A4-1B5.

Lane 1: KPNA1 transfected lysate(60.2 KDa).

Lane 2: Non-transfected lysate.



Immunoperoxidase of monoclonal antibody to KPNA1 on formalin-fixed paraffin-embedded human testis. [antibody concentration 1 ug/ml]



Detection limit for recombinant GST tagged KPNA1 is approximately 1ng/ml as a capture antibody.

KPNA1 Antibody (monoclonal) (M01) - Background

Recombination activating proteins RAG1 and RAG2 regulate and mediate V(D)J recombination, the process by which genes for immunoglobulins and T-cell receptors are generated. Several other ubiquitously expressed proteins are thought to be recruited in the recombination process. Among these are the genes affected in severe combined immune deficiency and genes involved in ds-DNA

break repair. The protein encoded by this gene interacts with RAG1 and may play a role in V(D)J recombination. Two transcript variants, one protein-coding and the other not, have been found for this gene.

KPNA1 Antibody (monoclonal) (M01) - References

1.Targeted disruption of one of the importin β family members leads to female functional incompetence in delivery.Moriyama T, Nagai M, Oka M, Ikawa M, Okabe M, Yoneda Y.FEBS J. 2011 Mar 3. doi: 10.1111/j.1742-4658. 2011.08079.x. [Epub ahead of print]2.Nuclear import impairment causes cytoplasmic trans-activation response DNA-binding protein accumulation and is associated with frontotemporal lobar degeneration.Nishimura AL, Zupunski V, Troakes C, Kathe C, Fratta P, Howell M, Gallo JM, Hortobagyi T, Shaw CE, Rogelj B.Brain. 2010 Jun;133(Pt 6):1763-71. Epub 2010 May 14.