

**KRT4 Antibody (monoclonal) (M01)****Mouse monoclonal antibody raised against a partial recombinant KRT4.****Catalog # AT2659a****Specification**

---

**KRT4 Antibody (monoclonal) (M01) - Product Information**

Application	WB, IHC, IF, E
Primary Accession	<a href="#">P19013</a>
Other Accession	<a href="#">NM_002272</a>
Reactivity	Human
Host	mouse
Clonality	Monoclonal
Isotype	IgG1 Kappa
Calculated MW	56144

**KRT4 Antibody (monoclonal) (M01) - Additional Information****Gene ID** 3851**Other Names**

Keratin, type II cytoskeletal 4, Cytokeratin-4, CK-4, Keratin-4, K4, Type-II keratin Kb4, KRT4, CYK4

**Target/Specificity**

KRT4 (NP\_002263, 194 a.a. ~ 300 a.a) partial recombinant protein with GST tag. MW of the GST tag alone is 26 KDa.

**Dilution**

WB~~1:500~1000

IHC~~1:100~500

IF~~1:50~200

E~~N/A

**Format**

Clear, colorless solution in phosphate buffered saline, pH 7.2 .

**Storage**

Store at -20°C or lower. Aliquot to avoid repeated freezing and thawing.

**Precautions**

KRT4 Antibody (monoclonal) (M01) is for research use only and not for use in diagnostic or therapeutic procedures.

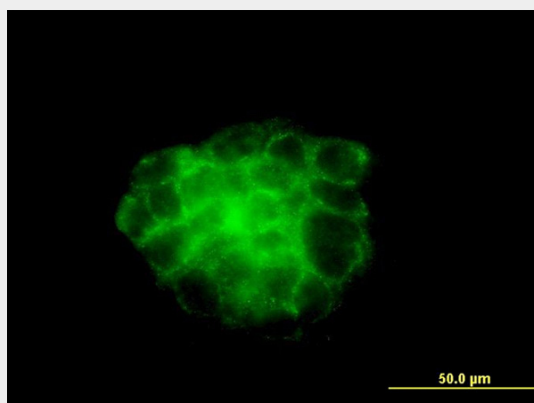
**KRT4 Antibody (monoclonal) (M01) - Protocols**

Provided below are standard protocols that you may find useful for product applications.

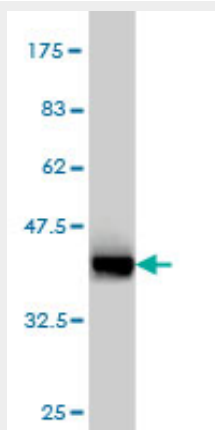
- [Western Blot](#)

- [Blocking Peptides](#)
- [Dot Blot](#)
- [Immunohistochemistry](#)
- [Immunofluorescence](#)
- [Immunoprecipitation](#)
- [Flow Cytometry](#)
- [Cell Culture](#)

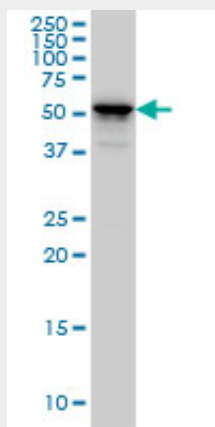
## KRT4 Antibody (monoclonal) (M01) - Images



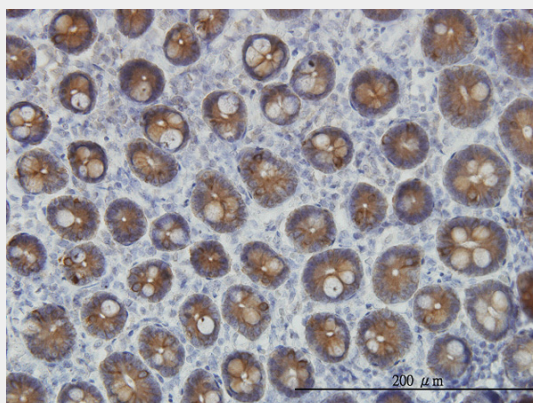
Immunofluorescence of monoclonal antibody to KRT4 on A-431 cell. [antibody concentration 10 ug/ml]



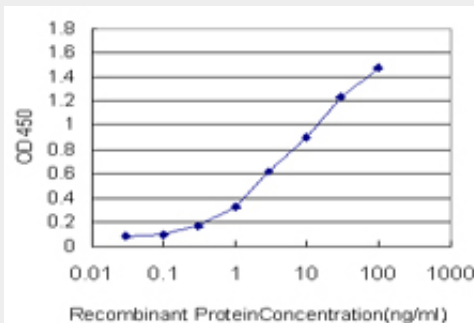
Antibody Reactive Against Recombinant Protein. Western Blot detection against Immunogen (37.51 KDa) .



KRT4 monoclonal antibody (M01), clone 5H5 Western Blot analysis of KRT4 expression in A-431 (Cat # AT2659a )



Immunoperoxidase of monoclonal antibody to KRT4 on formalin-fixed paraffin-embedded human small Intestine. [antibody concentration 3 ug/ml]



Detection limit for recombinant GST tagged KRT4 is approximately 0.1ng/ml as a capture antibody.

### KRT4 Antibody (monoclonal) (M01) - Background

The protein encoded by this gene is a member of the keratin gene family. The type II cytokeratins consist of basic or neutral proteins which are arranged in pairs of heterotypic keratin chains coexpressed during differentiation of simple and stratified epithelial tissues. This type II cytokeratin is specifically expressed in differentiated layers of the mucosal and esophageal epithelia with family member KRT13. Mutations in these genes have been associated with White Sponge Nevus, characterized by oral, esophageal, and anal leukoplakia. The type II cytokeratins are clustered in a region of chromosome 12q12-q13.

### KRT4 Antibody (monoclonal) (M01) - References

Defining the human deubiquitinating enzyme interaction landscape. Sowa ME, et al. Cell, 2009 Jul 23. PMID 19615732. Comparative analysis of the expression of cytokeratins (1, 10, 14, 16, 4), involucrin, filaggrin and e-cadherin in plane warts and epidermodysplasia verruciformis plane wart-type lesions. Barcelos AC, et al. J Cutan Pathol, 2009 Jun. PMID 19515043. Plk1 self-organization and priming phosphorylation of HsCYK-4 at the spindle midzone regulate the onset of division in human cells. Burkard ME, et al. PLoS Biol, 2009 May 5. PMID 19468302. Polo-like kinase 1 directs assembly of the HsCyk-4 RhoGAP/Ect2 RhoGEF complex to initiate cleavage furrow formation. Wolfe BA, et al. PLoS Biol, 2009 May 5. PMID 19468300. Two new mutations in the keratin 4 gene causing oral white sponge nevus in Chinese family. Zhang JM, et al. Oral Dis, 2009 Jan. PMID 18992023.