

**KRTHB1 Antibody (monoclonal) (M01)**

Mouse monoclonal antibody raised against a full length recombinant KRTHB1.

Catalog # AT2662a

**Specification**

---

**KRTHB1 Antibody (monoclonal) (M01) - Product Information**

Application	WB, IHC, IF
Primary Accession	<a href="#">Q14533</a>
Other Accession	<a href="#">BC021241</a>
Reactivity	Human
Host	mouse
Clonality	Monoclonal
Isotype	IgG2b kappa
Calculated MW	54928

**KRTHB1 Antibody (monoclonal) (M01) - Additional Information**

**Gene ID** 3887

**Other Names**

Keratin, type II cuticular Hb1, Hair keratin K29, Keratin, hair, basic, Keratin-81, K81, Metastatic lymph node 137 gene protein, MLN 137, Type II hair keratin Hb1, Type-II keratin Kb21, ghHKb1, ghHb1, KRT81, KRTHB1, MLN137

**Target/Specificity**

KRTHB1 (AAH21241, 1 a.a. ~ 202 a.a) full-length recombinant protein with GST tag. MW of the GST tag alone is 26 KDa.

**Dilution**

WB~~1:500~1000

IHC~~1:100~500

IF~~1:50~200

**Format**

Clear, colorless solution in phosphate buffered saline, pH 7.2 .

**Storage**

Store at -20°C or lower. Aliquot to avoid repeated freezing and thawing.

**Precautions**

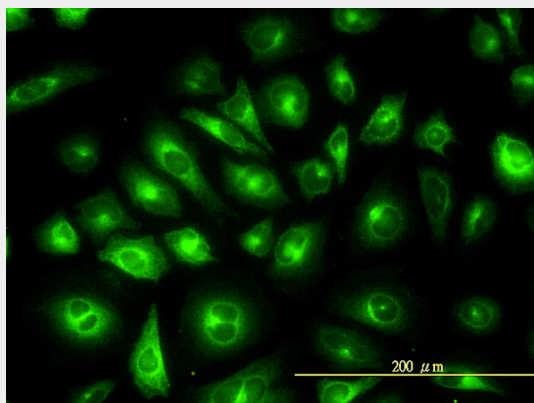
KRTHB1 Antibody (monoclonal) (M01) is for research use only and not for use in diagnostic or therapeutic procedures.

**KRTHB1 Antibody (monoclonal) (M01) - Protocols**

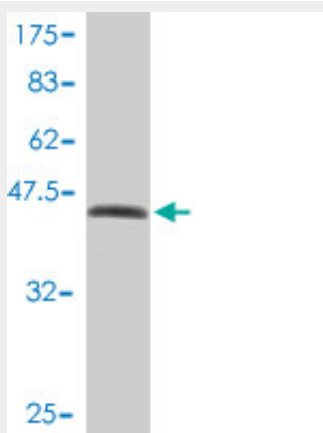
Provided below are standard protocols that you may find useful for product applications.

- [Western Blot](#)
- [Blocking Peptides](#)
- [Dot Blot](#)
- [Immunohistochemistry](#)
- [Immunofluorescence](#)
- [Immunoprecipitation](#)
- [Flow Cytometry](#)
- [Cell Culture](#)

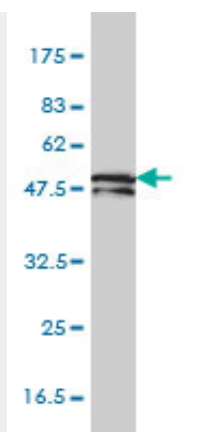
#### KRTHB1 Antibody (monoclonal) (M01) - Images



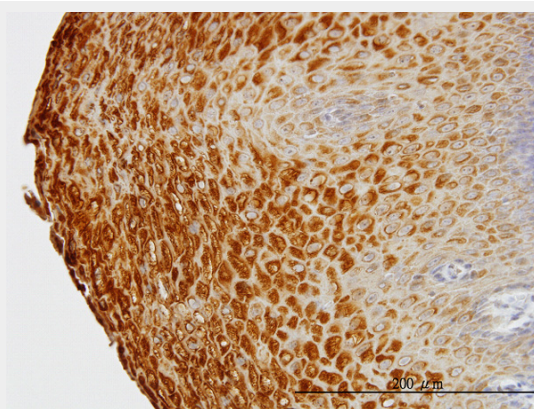
Immunofluorescence of monoclonal antibody to KRTHB1 on HeLa cell. [antibody concentration 10 ug/ml]



Antibody Reactive Against Recombinant Protein. Western Blot detection against Immunogen (47.96 KDa) .



KRTHB1 monoclonal antibody (M01), clone 3B10-5B10 Western Blot analysis of KRTHB1 expression in HepG2 (Cat # AT2662a)



Immunoperoxidase of monoclonal antibody to KRTHB1 on formalin-fixed paraffin-embedded human esophagus. [antibody concentration 3 ug/ml]

#### **KRTHB1 Antibody (monoclonal) (M01) - Background**

The protein encoded by this gene is a member of the keratin gene family. As a type II hair keratin, it is a basic protein which heterodimerizes with type I keratins to form hair and nails. The type II hair keratins are clustered in a region of chromosome 12q13 and are grouped into two distinct subfamilies based on structure similarity. One subfamily, consisting of KRTHB1, KRTHB3, and KRTHB6, is highly related. The other less-related subfamily includes KRTHB2, KRTHB4, and KRTHB5. All hair keratins are expressed in the hair follicle; this hair keratin, as well as KRTHB3 and KRTHB6, is found primarily in the hair cortex. Mutations in this gene and KRTHB6 have been observed in patients with a rare dominant hair disease, monilethrix.

#### **KRTHB1 Antibody (monoclonal) (M01) - References**

Defining the human deubiquitinating enzyme interaction landscape. Sowa ME, et al. Cell, 2009 Jul 23. PMID 19615732. Transcriptional activation of a subset of hair keratin genes by the NF-kappaB effector p65/RelA. Gilon M, et al. Differentiation, 2008 May. PMID 18021261. New consensus nomenclature for mammalian keratins. Schweizer J, et al. J Cell Biol, 2006 Jul 17. PMID 16831889. Towards a proteome-scale map of the human protein-protein interaction network. Rual JF, et al. Nature, 2005 Oct 20. PMID 16189514. Keratins of the human hair follicle. Langbein L, et al. Int Rev Cytol, 2005. PMID 15797458.