

**LAMA2 Antibody (monoclonal) (M01)****Mouse monoclonal antibody raised against a partial recombinant LAMA2.****Catalog # AT2668a****Specification**

---

**LAMA2 Antibody (monoclonal) (M01) - Product Information**

Application	WB, IHC, E
Primary Accession	<a href="#">P24043</a>
Other Accession	<a href="#">NM_000426</a>
Reactivity	Human
Host	mouse
Clonality	Monoclonal
Isotype	IgG1 Kappa
Calculated MW	343905

**LAMA2 Antibody (monoclonal) (M01) - Additional Information****Gene ID** 3908**Other Names**

Laminin subunit alpha-2, Laminin M chain, Laminin-12 subunit alpha, Laminin-2 subunit alpha, Laminin-4 subunit alpha, Merosin heavy chain, LAMA2, LAMM

**Target/Specificity**

LAMA2 (NP\_000417, 3013 a.a. ~ 3122 a.a) partial recombinant protein with GST tag. MW of the GST tag alone is 26 KDa.

**Dilution**

WB~~1:500~1000

IHC~~1:100~500

E~~N/A

**Format**

Clear, colorless solution in phosphate buffered saline, pH 7.2 .

**Storage**

Store at -20°C or lower. Aliquot to avoid repeated freezing and thawing.

**Precautions**

LAMA2 Antibody (monoclonal) (M01) is for research use only and not for use in diagnostic or therapeutic procedures.

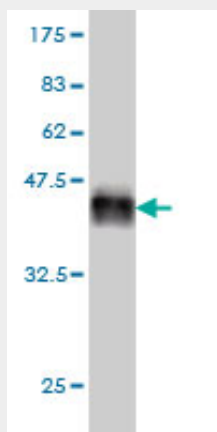
**LAMA2 Antibody (monoclonal) (M01) - Protocols**

Provided below are standard protocols that you may find useful for product applications.

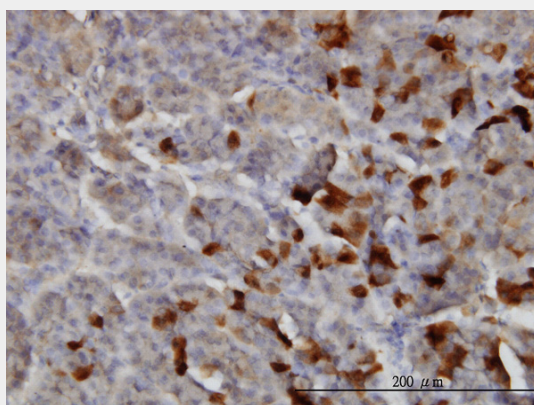
- [Western Blot](#)

- [Blocking Peptides](#)
- [Dot Blot](#)
- [Immunohistochemistry](#)
- [Immunofluorescence](#)
- [Immunoprecipitation](#)
- [Flow Cytometry](#)
- [Cell Culture](#)

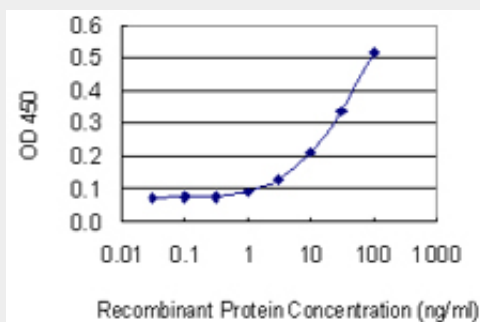
## LAMA2 Antibody (monoclonal) (M01) - Images



Antibody Reactive Against Recombinant Protein. Western Blot detection against Immunogen (37.84 KDa) .



Immunoperoxidase of monoclonal antibody to LAMA2 on formalin-fixed paraffin-embedded human pancreas. [antibody concentration 1 ug/ml]



Detection limit for recombinant GST tagged LAMA2 is 1 ng/ml as a capture antibody.

## LAMA2 Antibody (monoclonal) (M01) - Background

Laminin, an extracellular protein, is a major component of the basement membrane. It is thought to mediate the attachment, migration, and organization of cells into tissues during embryonic development by interacting with other extracellular matrix components. It is composed of three subunits, alpha, beta, and gamma, which are bound to each other by disulfide bonds into a cross-shaped molecule. This gene encodes the alpha 2 chain, which constitutes one of the subunits of laminin 2 (merosin) and laminin 4 (s-merosin). Mutations in this gene have been identified as the cause of congenital merosin-deficient muscular dystrophy. Two transcript variants encoding different proteins have been found for this gene.

#### **LAMA2 Antibody (monoclonal) (M01) - References**

1. Advanced Intimal Hyperplasia Without Luminal Narrowing of Leptomeningeal Arteries in CADASIL. Dong H, Ding H, Young K, Blaivas M, Christensen PJ, Wang MM. Stroke. 2013 Mar 12;54(3):e1000514.
2. Quiescent fibroblasts exhibit high metabolic activity. Lemons JM, Feng XJ, Bennett BD, Legesse-Miller A, Johnson EL, Raitman I, Pollina EA, Rabitz HA, Rabinowitz JD, Collier HA. PLoS Biol. 2010 Oct 19;8(10):e1000514.