

**LAT Antibody (monoclonal) (M01)**

Mouse monoclonal antibody raised against a full length recombinant LAT.

Catalog # AT2679a

**Specification**

---

**LAT Antibody (monoclonal) (M01) - Product Information**

Application	WB, IHC, E
Primary Accession	<a href="#">O43561</a>
Other Accession	<a href="#">BC011563</a>
Reactivity	Human
Host	mouse
Clonality	Monoclonal
Isotype	IgG1 kappa
Calculated MW	27930

**LAT Antibody (monoclonal) (M01) - Additional Information**

**Gene ID** 27040

**Other Names**

Linker for activation of T-cells family member 1, 36 kDa phospho-tyrosine adapter protein, pp36, p36-38, LAT

**Target/Specificity**

LAT (AAH11563, 1 a.a. ~ 233 a.a) full-length recombinant protein with GST tag. MW of the GST tag alone is 26 KDa.

**Dilution**

WB~~1:500~1000

**Format**

Clear, colorless solution in phosphate buffered saline, pH 7.2 .

**Storage**

Store at -20°C or lower. Aliquot to avoid repeated freezing and thawing.

**Precautions**

LAT Antibody (monoclonal) (M01) is for research use only and not for use in diagnostic or therapeutic procedures.

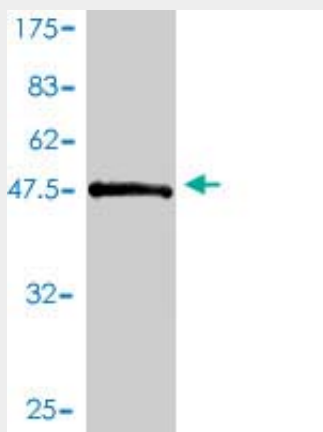
**LAT Antibody (monoclonal) (M01) - Protocols**

Provided below are standard protocols that you may find useful for product applications.

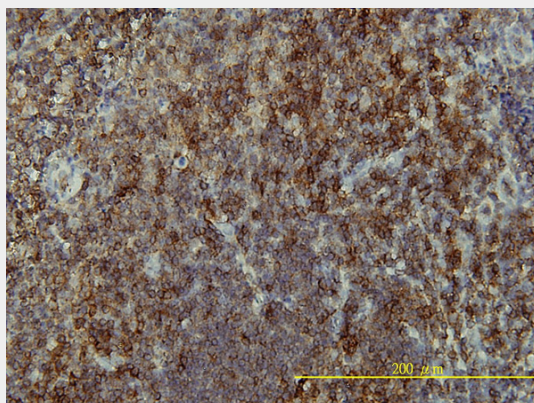
- [Western Blot](#)
- [Blocking Peptides](#)
- [Dot Blot](#)

- [Immunohistochemistry](#)
- [Immunofluorescence](#)
- [Immunoprecipitation](#)
- [Flow Cytometry](#)
- [Cell Culture](#)

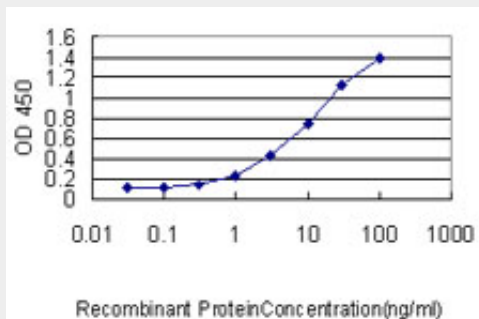
### LAT Antibody (monoclonal) (M01) - Images



Antibody Reactive Against Recombinant Protein. Western Blot detection against Immunogen (51.37 KDa) .



Immunoperoxidase of monoclonal antibody to LAT on formalin-fixed paraffin-embedded human tonsil tissue. [antibody concentration 5 ug/ml]



Detection limit for recombinant GST tagged LAT is approximately 0.03ng/ml as a capture antibody.

### LAT Antibody (monoclonal) (M01) - Background

The protein encoded by this gene is phosphorylated by ZAP-70/Syk protein tyrosine kinases following activation of the T-cell antigen receptor (TCR) signal transduction pathway. This transmembrane protein localizes to lipid rafts and acts as a docking site for SH2 domain-containing proteins. Upon phosphorylation, this protein recruits multiple adaptor proteins and downstream signaling molecules into multimolecular signaling complexes located near the site of TCR engagement. Alternative splicing results in multiple transcript variants encoding different isoforms.

#### **LAT Antibody (monoclonal) (M01) - References**

New genetic associations detected in a host response study to hepatitis B vaccine. Davila S, et al. Genes Immun, 2010 Apr. PMID 20237496. Defining the human deubiquitinating enzyme interaction landscape. Sowa ME, et al. Cell, 2009 Jul 23. PMID 19615732. PI3 kinase function is vital for the function but not formation of LAT-mediated signaling complexes. Cruz-Orcutt N, et al. Mol Immunol, 2009 Jul. PMID 19427038. The essential role of LAT in thymocyte development during transition from the double-positive to single-positive stage. Shen S, et al. J Immunol, 2009 May 1. PMID 19380807. Association study between single-nucleotide polymorphisms in 199 drug-related genes and commonly measured quantitative traits of 752 healthy Japanese subjects. Saito A, et al. J Hum Genet, 2009 Jun. PMID 19343046.