

**LCN1 Antibody (monoclonal) (M02)****Mouse monoclonal antibody raised against a partial recombinant LCN1.****Catalog # AT2680a****Specification**

---

**LCN1 Antibody (monoclonal) (M02) - Product Information**

Application	WB, E
Primary Accession	<a href="#">P31025</a>
Other Accession	<a href="#">NM_002297</a>
Reactivity	Human
Host	mouse
Clonality	Monoclonal
Isotype	IgG2a Kappa
Calculated MW	19250

**LCN1 Antibody (monoclonal) (M02) - Additional Information****Gene ID** 3933**Other Names**

Lipocalin-1, Tear lipocalin, Tlc, Tear prealbumin, TP, Von Ebner gland protein, VEG protein, LCN1, VEGP

**Target/Specificity**

LCN1 (NP\_002288, 24 a.a. ~ 120 a.a) partial recombinant protein with GST tag. MW of the GST tag alone is 26 KDa.

**Dilution**

WB~~1:500~1000

E~~N/A

**Format**

Clear, colorless solution in phosphate buffered saline, pH 7.2 .

**Storage**

Store at -20°C or lower. Aliquot to avoid repeated freezing and thawing.

**Precautions**

LCN1 Antibody (monoclonal) (M02) is for research use only and not for use in diagnostic or therapeutic procedures.

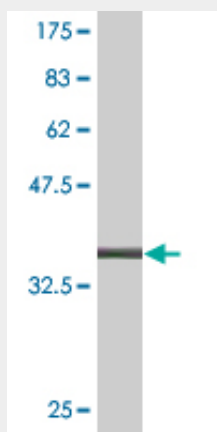
**LCN1 Antibody (monoclonal) (M02) - Protocols**

Provided below are standard protocols that you may find useful for product applications.

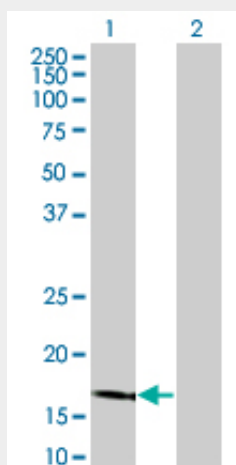
- [Western Blot](#)
- [Blocking Peptides](#)

- [Dot Blot](#)
- [Immunohistochemistry](#)
- [Immunofluorescence](#)
- [Immunoprecipitation](#)
- [Flow Cytometry](#)
- [Cell Culture](#)

### LCN1 Antibody (monoclonal) (M02) - Images

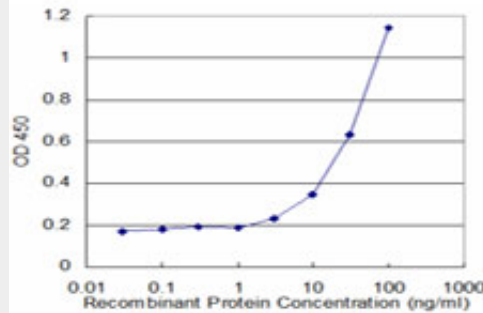


Antibody Reactive Against Recombinant Protein. Western Blot detection against Immunogen (36.41 kDa) .



Western Blot analysis of LCN1 expression in transfected 293T cell line by LCN1 monoclonal antibody (M02), clone 1B11.

Lane 1: LCN1 transfected lysate (19.25 kDa).  
Lane 2: Non-transfected lysate.



Detection limit for recombinant GST tagged LCN1 is approximately 3ng/ml as a capture antibody.

### **LCN1 Antibody (monoclonal) (M02) - Background**

The protein encoded by this gene belongs to the lipocalin family. Lipocalins are a group of extracellular proteins that are able to bind lipophiles by enclosure within their structures to minimize solvent contact. This protein may bind hydrophobic ligands and inhibit cysteine proteinases. It may also play a role in taste reception.

### **LCN1 Antibody (monoclonal) (M02) - References**

A new crystal form of human tear lipocalin reveals high flexibility in the loop region and induced fit in the ligand cavity. Breustedt DA, et al. Acta Crystallogr D Biol Crystallogr, 2009 Oct. PMID 19770509. Intracavitary ligand distribution in tear lipocalin by site-directed tryptophan fluorescence. Gasymov OK, et al. Biochemistry, 2009 Aug 4. PMID 19586017. Tear lipocalin is the major endonuclease in tears. Yusifov TN, et al. Mol Vis, 2008 Jan 29. PMID 18334931. Evidence for internal and external binding sites on human tear lipocalin. Gasymov OK, et al. Arch Biochem Biophys, 2007 Dec 1. PMID 17945179. Oligomeric state of lipocalin-1 (LCN1) by multiangle laser light scattering and fluorescence anisotropy decay. Gasymov OK, et al. Biochim Biophys Acta, 2007 Oct. PMID 17869594.