

**LDB3 Antibody (monoclonal) (M06A)****Mouse monoclonal antibody raised against a full length recombinant LDB3.****Catalog # AT2687a****Specification**

---

**LDB3 Antibody (monoclonal) (M06A) - Product Information**

Application	WB, E
Primary Accession	<a href="#">O75112</a>
Other Accession	<a href="#">BC010929</a>
Reactivity	Human
Host	Mouse
Clonality	Monoclonal
Isotype	IgG2b Kappa
Calculated MW	77135

**LDB3 Antibody (monoclonal) (M06A) - Additional Information****Gene ID** 11155**Other Names**

LIM domain-binding protein 3, Protein cypher, Z-band alternatively spliced PDZ-motif protein, LDB3  
([http://www.genenames.org/cgi-bin/gene\\_symbol\\_report?hgnc\\_id=15710](http://www.genenames.org/cgi-bin/gene_symbol_report?hgnc_id=15710)  
target="\_blank">HGNC:15710</a>)

**Target/Specificity**

LDB3 (AAH10929, 1 a.a. ~ 283 a.a) full-length recombinant protein with GST tag. MW of the GST tag alone is 26 KDa.

**Dilution**

WB~~1:500~1000

E~~N/A

**Format**

Clear, colorless solution in phosphate buffered saline, pH 7.2 .

**Storage**

Store at -20°C or lower. Aliquot to avoid repeated freezing and thawing.

**Precautions**

LDB3 Antibody (monoclonal) (M06A) is for research use only and not for use in diagnostic or therapeutic procedures.

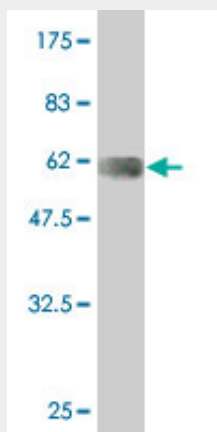
**LDB3 Antibody (monoclonal) (M06A) - Protocols**

Provided below are standard protocols that you may find useful for product applications.

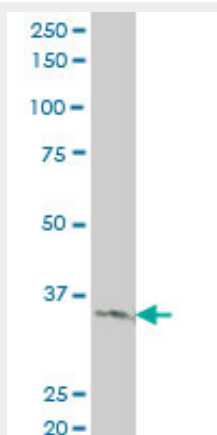
- [Western Blot](#)

- [Blocking Peptides](#)
- [Dot Blot](#)
- [Immunohistochemistry](#)
- [Immunofluorescence](#)
- [Immunoprecipitation](#)
- [Flow Cytometry](#)
- [Cell Culture](#)

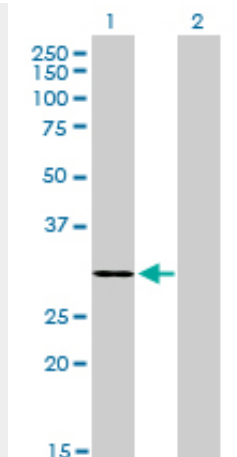
#### **LDB3 Antibody (monoclonal) (M06A) - Images**



Antibody Reactive Against Recombinant Protein. Western Blot detection against Immunogen (56.87 KDa) .



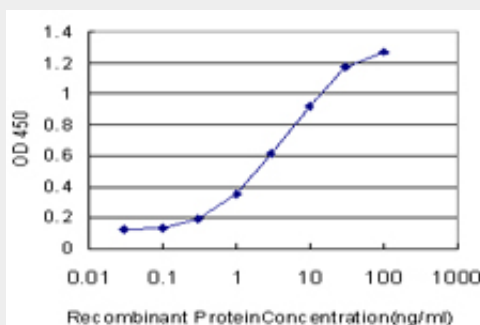
LDB3 monoclonal antibody (M06A), clone 3C8 Western Blot analysis of LDB3 expression in A-431 ( (Cat # AT2687a )



Western Blot analysis of LDB3 expression in transfected 293T cell line by LDB3 monoclonal antibody (M06A), clone 3C8.

Lane 1: LDB3 transfected lysate(31 KDa).

Lane 2: Non-transfected lysate.



Detection limit for recombinant GST tagged LDB3 is approximately 0.03ng/ml as a capture antibody.

### LDB3 Antibody (monoclonal) (M06A) - Background

This gene encodes a PDZ domain-containing protein. PDZ motifs are modular protein-protein interaction domains consisting of 80-120 amino acid residues. PDZ domain-containing proteins interact with each other in cytoskeletal assembly or with other proteins involved in targeting and clustering of membrane proteins. The protein encoded by this gene interacts with alpha-actinin-2 through its N-terminal PDZ domain and with protein kinase C via its C-terminal LIM domains. The LIM domain is a cysteine-rich motif defined by 50-60 amino acids containing two zinc-binding modules. This protein also interacts with all three members of the myozenin family. Mutations in this gene have been associated with myofibrillar myopathy and dilated cardiomyopathy. Alternatively spliced transcript variants encoding different isoforms have been identified; all isoforms have N-terminal PDZ domains while only longer isoforms (1, 2 and 5) have C-terminal LIM domains.

### LDB3 Antibody (monoclonal) (M06A) - References

A novel custom resequencing array for dilated cardiomyopathy. Zimmerman RS, et al. Genet Med, 2010 May. PMID 20474083. Common susceptibility variants examined for association with dilated cardiomyopathy. Rampersaud E, et al. Ann Hum Genet, 2010 Mar. PMID 20201937. Differences in aberrant expression and splicing of sarcomeric proteins in the myotonic dystrophies DM1 and DM2. Vihola A, et al. Acta Neuropathol, 2010 Apr. PMID 20066428. Candidate-gene testing for orphan

limb-girdle muscular dystrophies. Aurino S, et al. Acta Myol, 2008 Dec. PMID 19472918. Impaired binding of ZASP/Cypher with phosphoglucomutase 1 is associated with dilated cardiomyopathy. Arimura T, et al. Cardiovasc Res, 2009 Jul 1. PMID 19377068.