

**LHX1 Antibody (monoclonal) (M01)****Mouse monoclonal antibody raised against a partial recombinant LHX1.****Catalog # AT2705a****Specification**

---

**LHX1 Antibody (monoclonal) (M01) - Product Information**

Application	IHC, IF, E
Primary Accession	<a href="#">P48742</a>
Other Accession	<a href="#">NM_005568</a>
Reactivity	Human
Host	mouse
Clonality	Monoclonal
Isotype	IgG2a Kappa
Calculated MW	44808

**LHX1 Antibody (monoclonal) (M01) - Additional Information****Gene ID** 3975**Other Names**

LIM/homeobox protein Lhx1, LIM homeobox protein 1, Homeobox protein Lim-1, hLim-1, LHX1, LIM-1, LIM1

**Target/Specificity**

LHX1 (NP\_005559, 1 a.a. ~ 100 a.a) partial recombinant protein with GST tag. MW of the GST tag alone is 26 KDa.

**Dilution**

IHC~~1:100~500

IF~~1:50~200

E~~N/A

**Format**

Clear, colorless solution in phosphate buffered saline, pH 7.2 .

**Storage**

Store at -20°C or lower. Aliquot to avoid repeated freezing and thawing.

**Precautions**

LHX1 Antibody (monoclonal) (M01) is for research use only and not for use in diagnostic or therapeutic procedures.

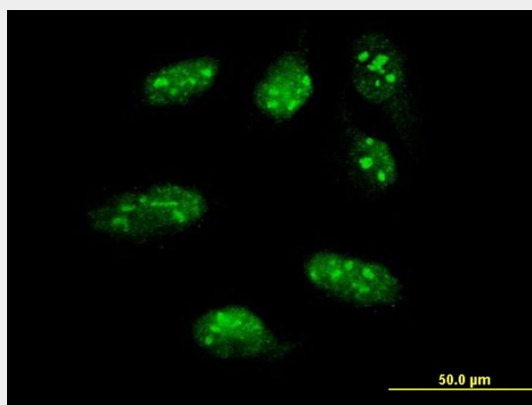
**LHX1 Antibody (monoclonal) (M01) - Protocols**

Provided below are standard protocols that you may find useful for product applications.

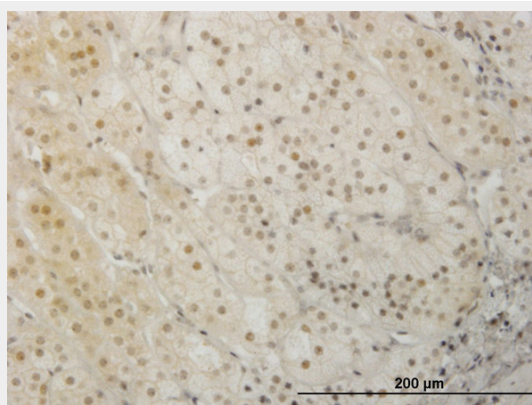
- [Western Blot](#)

- [Blocking Peptides](#)
- [Dot Blot](#)
- [Immunohistochemistry](#)
- [Immunofluorescence](#)
- [Immunoprecipitation](#)
- [Flow Cytometry](#)
- [Cell Culture](#)

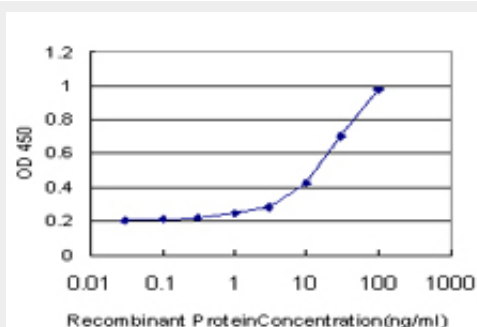
## LHX1 Antibody (monoclonal) (M01) - Images



Immunofluorescence of monoclonal antibody to LHX1 on HeLa cell . [antibody concentration 10 ug/ml]



Immunoperoxidase of monoclonal antibody to LHX1 on formalin-fixed paraffin-embedded human adrenal gland. [antibody concentration 0.8 ug/ml]



Detection limit for recombinant GST tagged LHX1 is approximately 1ng/ml as a capture antibody.

## LHX1 Antibody (monoclonal) (M01) - Background

This gene encodes a member of a large protein family which contains the LIM domain, a unique cysteine-rich zinc-binding domain. The encoded protein may function as a transcriptional regulator and be involved in control of differentiation and development of neural and lymphoid cells. A similar protein in mice is an essential regulator of the vertebrate head organizer.

#### **LHX1 Antibody (monoclonal) (M01) - References**

The role of genes in the development of Mullerian anomalies: where are we today? Christopoulos P, et al. Obstet Gynecol Surv, 2009 Nov. PMID 19849868. Transcriptional control of axonal guidance and sorting in dorsal interneurons by the Lim-HD proteins Lhx9 and Lhx1. Avraham O, et al. Neural Dev, 2009 Jun 19. PMID 19545367. Lim1 is essential for the correct laminar positioning of retinal horizontal cells. Poch? RA, et al. J Neurosci, 2007 Dec 19. PMID 18094249. DNA sequence of human chromosome 17 and analysis of rearrangement in the human lineage. Zody MC, et al. Nature, 2006 Apr 20. PMID 16625196. The status, quality, and expansion of the NIH full-length cDNA project: the Mammalian Gene Collection (MGC). Gerhard DS, et al. Genome Res, 2004 Oct. PMID 15489334.