

**LHX5 Antibody (monoclonal) (M10)****Mouse monoclonal antibody raised against a full length recombinant LHX5.****Catalog # AT2709a****Specification**

---

**LHX5 Antibody (monoclonal) (M10) - Product Information**

Application	WB, E
Primary Accession	<a href="#">O9H2C1</a>
Other Accession	<a href="#">NM_022363</a>
Reactivity	Human
Host	mouse
Clonality	Monoclonal
Isotype	IgG2a Kappa
Calculated MW	44406

**LHX5 Antibody (monoclonal) (M10) - Additional Information****Gene ID** 64211**Other Names**

LIM/homeobox protein Lhx5, LIM homeobox protein 5, LHX5

**Target/Specificity**

LHX5 (NP\_071758, 114 a.a. ~ 182 a.a) full length recombinant protein with GST tag. MW of the GST tag alone is 26 KDa.

**Dilution**

WB~~1:500~1000

E~~N/A

**Format**

Clear, colorless solution in phosphate buffered saline, pH 7.2 .

**Storage**

Store at -20°C or lower. Aliquot to avoid repeated freezing and thawing.

**Precautions**

LHX5 Antibody (monoclonal) (M10) is for research use only and not for use in diagnostic or therapeutic procedures.

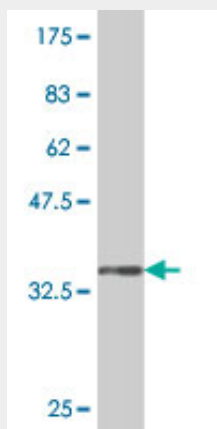
**LHX5 Antibody (monoclonal) (M10) - Protocols**

Provided below are standard protocols that you may find useful for product applications.

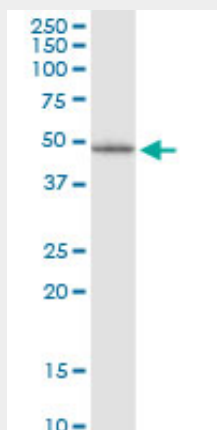
- [Western Blot](#)
- [Blocking Peptides](#)
- [Dot Blot](#)

- [Immunohistochemistry](#)
- [Immunofluorescence](#)
- [Immunoprecipitation](#)
- [Flow Cytometry](#)
- [Cell Culture](#)

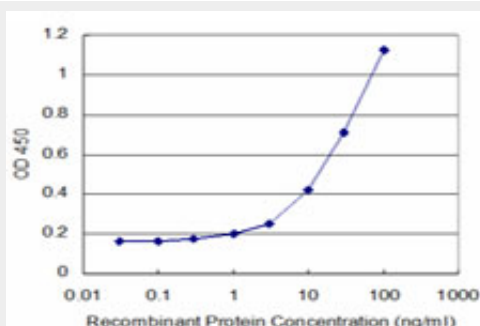
## LHX5 Antibody (monoclonal) (M10) - Images



Antibody Reactive Against Recombinant Protein. Western Blot detection against Immunogen (33.59 KDa) .



LHX5 monoclonal antibody (M10), clone 2C6. Western Blot analysis of LHX5 expression in human pancreas.



Detection limit for recombinant GST tagged LHX5 is approximately 1ng/ml as a capture antibody.

## LHX5 Antibody (monoclonal) (M10) - Background

This gene encodes a protein belonging to a large protein family, members of which carry the LIM domain, a unique cysteine-rich zinc-binding domain. The encoded protein may function as a transcriptional regulator and be involved in the control of differentiation and development of the forebrain. In mice, this protein is essential for the regulation of precursor cell proliferation and the control of neuronal differentiation and migration during hippocampal development. This protein is involved in learning and motor functions in adult mice.

#### **LHX5 Antibody (monoclonal) (M10) - References**

Genome-wide association studies in an isolated founder population from the Pacific Island of Kosrae. Lowe JK, et al. PLoS Genet, 2009 Feb. PMID 19197348. The status, quality, and expansion of the NIH full-length cDNA project: the Mammalian Gene Collection (MGC). Gerhard DS, et al. Genome Res, 2004 Oct. PMID 15489334. Mutational analysis of two positional candidate susceptibility genes for bipolar disorder on chromosome 12q23-q24: phenylalanine hydroxylase and human LIM-homeobox LHX5. Green EK, et al. Psychiatr Genet, 2003 Jun. PMID 12782966. Generation and initial analysis of more than 15,000 full-length human and mouse cDNA sequences. Strausberg RL, et al. Proc Natl Acad Sci U S A, 2002 Dec 24. PMID 12477932. Learning impairments and motor dysfunctions in adult Lhx5-deficient mice displaying hippocampal disorganization. Paylor R, et al. Physiol Behav, 2001 Aug. PMID 11566211.