

LMNB1 Antibody (monoclonal) (M03)**Mouse monoclonal antibody raised against a partial recombinant LMNB1.****Catalog # AT2721a****Specification**

LMNB1 Antibody (monoclonal) (M03) - Product Information

Application	WB, IHC, IF
Primary Accession	P20700
Other Accession	NM_005573
Reactivity	Human, Mouse
Host	mouse
Clonality	Monoclonal
Isotype	IgG2a Kappa
Calculated MW	66408

LMNB1 Antibody (monoclonal) (M03) - Additional Information**Gene ID** 4001**Other Names**

Lamin-B1, LMNB1, LMN2, LMNB

Target/Specificity

LMNB1 (NP_005564.1, 107 a.a. ~ 186 a.a) partial recombinant protein with GST tag. MW of the GST tag alone is 26 KDa.

Dilution

WB~~1:500~1000

IHC~~1:100~500

IF~~1:50~200

Format

Clear, colorless solution in phosphate buffered saline, pH 7.2 .

Storage

Store at -20°C or lower. Aliquot to avoid repeated freezing and thawing.

Precautions

LMNB1 Antibody (monoclonal) (M03) is for research use only and not for use in diagnostic or therapeutic procedures.

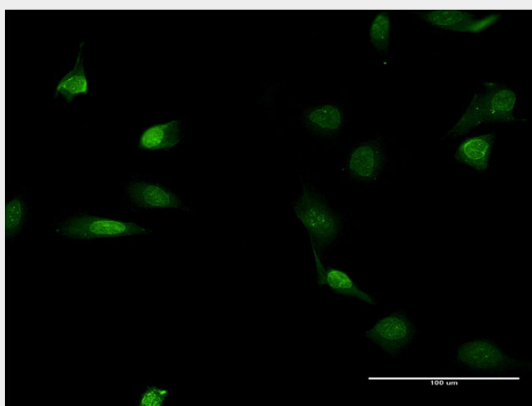
LMNB1 Antibody (monoclonal) (M03) - Protocols

Provided below are standard protocols that you may find useful for product applications.

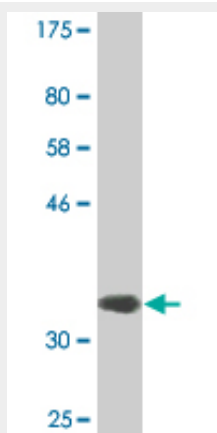
- [Western Blot](#)
- [Blocking Peptides](#)

- [Dot Blot](#)
- [Immunohistochemistry](#)
- [Immunofluorescence](#)
- [Immunoprecipitation](#)
- [Flow Cytometry](#)
- [Cell Culture](#)

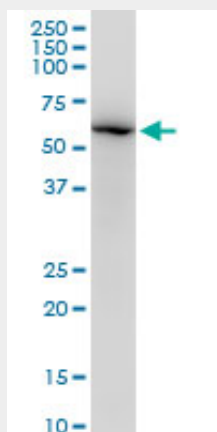
LMNB1 Antibody (monoclonal) (M03) - Images



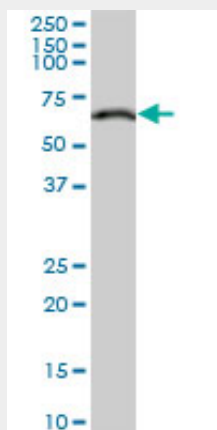
Immunofluorescence of monoclonal antibody to LMNB1 on HeLa cell . [antibody concentration 10 ug/ml]



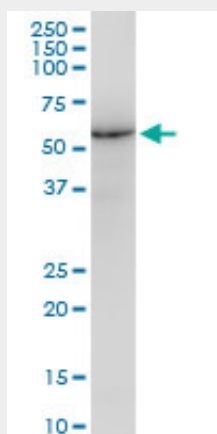
Antibody Reactive Against Recombinant Protein. Western Blot detection against Immunogen (34.43 KDa) .



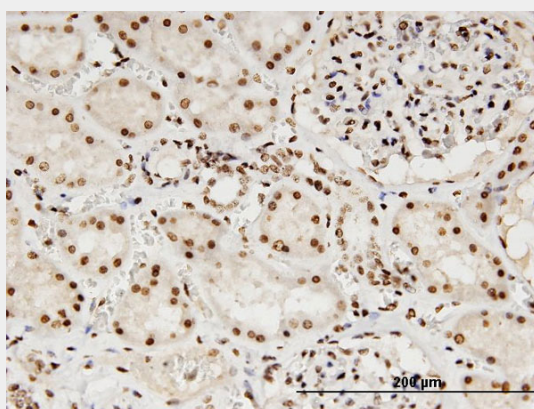
LMNB1 monoclonal antibody (M03), clone 4E4. Western Blot analysis of LMNB1 expression in Raw 264.7((Cat # AT2721a)



LMNB1 monoclonal antibody (M03), clone 4E4. Western Blot analysis of LMNB1 expression in Jurkat ((Cat # AT2721a)



LMNB1 monoclonal antibody (M03), clone 4E4. Western Blot analysis of LMNB1 expression in NIH/3T3((Cat # AT2721a)



Immunoperoxidase of monoclonal antibody to LMNB1 on formalin-fixed paraffin-embedded human kidney. [antibody concentration 3 ug/ml]

LMNB1 Antibody (monoclonal) (M03) - Background

The nuclear lamina consists of a two-dimensional matrix of proteins located next to the inner nuclear membrane. The lamin family of proteins make up the matrix and are highly conserved in evolution. During mitosis, the lamina matrix is reversibly disassembled as the lamin proteins are

phosphorylated. Lamin proteins are thought to be involved in nuclear stability, chromatin structure and gene expression. Vertebrate lamins consist of two types, A and B. This gene encodes one of the two B type proteins, B1.

LMNB1 Antibody (monoclonal) (M03) - References

Variation at the NFATC2 Locus Increases the Risk of Thiazolinedione-Induced Edema in the Diabetes REduction Assessment with ramipril and rosiglitazone Medication (DREAM) Study. Bailey SD, et al. Diabetes Care, 2010 Jul 13. PMID 20628086. Aire's partners in the molecular control of immunological tolerance. Abramson J, et al. Cell, 2010 Jan 8. PMID 20085707. Characterization of the head-to-tail overlap complexes formed by human lamin A, B1 and B2 half-minilamin dimers. Kapinos LE, et al. J Mol Biol, 2010 Feb 26. PMID 20004208. A family with autosomal dominant leukodystrophy linked to 5q23.2-q23.3 without lamin B1 mutations. Brussino A, et al. Eur J Neurol, 2010 Apr. PMID 19961535. Gene-centric association signals for lipids and apolipoproteins identified via the HumanCVD BeadChip. Talmud PJ, et al. Am J Hum Genet, 2009 Nov. PMID 19913121.