

LSP1 Antibody (monoclonal) (M07)**Mouse monoclonal antibody raised against a partial recombinant LSP1.****Catalog # AT2744a****Specification**

LSP1 Antibody (monoclonal) (M07) - Product Information

Application	WB, E
Primary Accession	P33241
Other Accession	NM_002339
Reactivity	Human
Host	mouse
Clonality	Monoclonal
Isotype	IgG2a Kappa
Calculated MW	37192

LSP1 Antibody (monoclonal) (M07) - Additional Information**Gene ID** 4046**Other Names**

Lymphocyte-specific protein 1, 47 kDa actin-binding protein, 52 kDa phosphoprotein, pp52, Lymphocyte-specific antigen WP34, LSP1, WP34

Target/Specificity

LSP1 (NP_002330.1, 240 a.a. ~ 338 a.a) partial recombinant protein with GST tag. MW of the GST tag alone is 26 KDa.

Dilution

WB~~1:500~1000

E~~N/A

Format

Clear, colorless solution in phosphate buffered saline, pH 7.2 .

Storage

Store at -20°C or lower. Aliquot to avoid repeated freezing and thawing.

Precautions

LSP1 Antibody (monoclonal) (M07) is for research use only and not for use in diagnostic or therapeutic procedures.

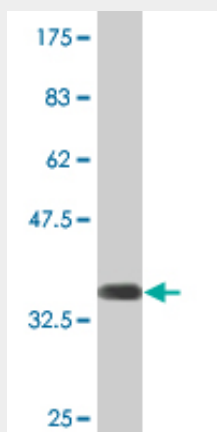
LSP1 Antibody (monoclonal) (M07) - Protocols

Provided below are standard protocols that you may find useful for product applications.

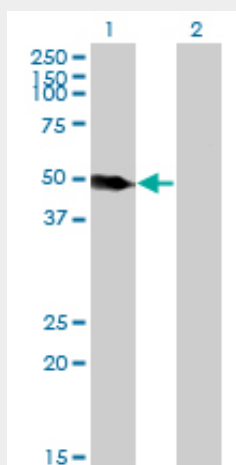
- [Western Blot](#)
- [Blocking Peptides](#)

- [Dot Blot](#)
- [Immunohistochemistry](#)
- [Immunofluorescence](#)
- [Immunoprecipitation](#)
- [Flow Cytometry](#)
- [Cell Culture](#)

LSP1 Antibody (monoclonal) (M07) - Images



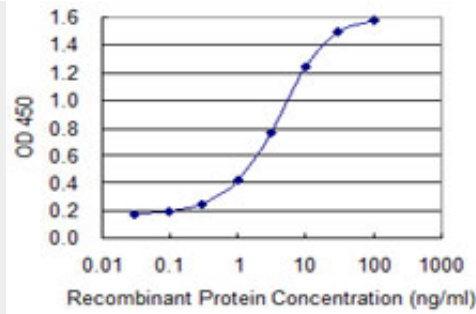
Antibody Reactive Against Recombinant Protein. Western Blot detection against Immunogen (36.63 KDa) .



Western Blot analysis of LSP1 expression in transfected 293T cell line by LSP1 monoclonal antibody (M07), clone 1C4.

Lane 1: LSP1 transfected lysate(37.2 KDa).

Lane 2: Non-transfected lysate.



Detection limit for recombinant GST tagged LSP1 is 0.1 ng/ml as a capture antibody.

LSP1 Antibody (monoclonal) (M07) - Background

This gene encodes an intracellular F-actin binding protein. The protein is expressed in lymphocytes, neutrophils, macrophages, and endothelium and may regulate neutrophil motility, adhesion to fibrinogen matrix proteins, and transendothelial migration. Alternative splicing results in multiple transcript variants encoding different isoforms.

LSP1 Antibody (monoclonal) (M07) - References

Variation at the NFATC2 Locus Increases the Risk of Thiazolinedinedione-Induced Edema in the Diabetes REduction Assessment with ramipril and rosiglitazone Medication (DREAM) Study. Bailey SD, et al. Diabetes Care, 2010 Jul 13. PMID 20628086. Gene-environment interactions in 7610 women with breast cancer: prospective evidence from the Million Women Study. Travis RC, et al. Lancet, 2010 Jun 19. PMID 20605201. FGFR2 and other loci identified in genome-wide association studies are associated with breast cancer in African-American and younger women. Barnholtz-Sloan JS, et al. Carcinogenesis, 2010 Aug. PMID 20554749. Genome-wide association study identifies five new breast cancer susceptibility loci. Turnbull C, et al. Nat Genet, 2010 Jun. PMID 20453838. Distribution of FGFR2, TNRC9, MAP3K1, LSP1, and 8q24 alleles in genetically enriched breast cancer patients versus elderly tumor-free women. Gorodnova TV, et al. Cancer Genet Cytogenet, 2010 May. PMID 20417875.