

LTBP2 Antibody (monoclonal) (M01)**Mouse monoclonal antibody raised against a partial recombinant LTBP2.****Catalog # AT2747a****Specification**

LTBP2 Antibody (monoclonal) (M01) - Product Information

Application	WB, E
Primary Accession	Q14767
Other Accession	NM_000428
Reactivity	Human
Host	mouse
Clonality	Monoclonal
Isotype	IgG2a Kappa
Calculated MW	195052

LTBP2 Antibody (monoclonal) (M01) - Additional Information**Gene ID** 4053**Other Names**

Latent-transforming growth factor beta-binding protein 2, LTBP-2, LTBP2, C14orf141, LTBP3

Target/Specificity

LTBP2 (NP_000419, 1709 a.a. ~ 1818 a.a) partial recombinant protein with GST tag. MW of the GST tag alone is 26 KDa.

Dilution

WB~~1:500~1000

E~~N/A

Format

Clear, colorless solution in phosphate buffered saline, pH 7.2 .

Storage

Store at -20°C or lower. Aliquot to avoid repeated freezing and thawing.

Precautions

LTBP2 Antibody (monoclonal) (M01) is for research use only and not for use in diagnostic or therapeutic procedures.

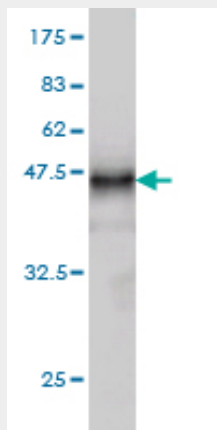
LTBP2 Antibody (monoclonal) (M01) - Protocols

Provided below are standard protocols that you may find useful for product applications.

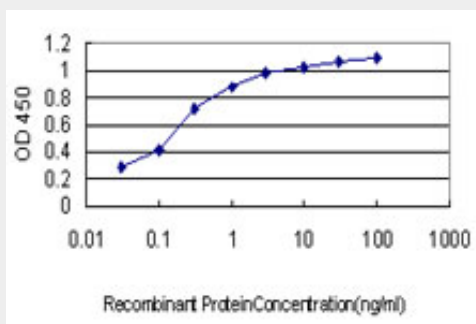
- [Western Blot](#)
- [Blocking Peptides](#)
- [Dot Blot](#)

- [Immunohistochemistry](#)
- [Immunofluorescence](#)
- [Immunoprecipitation](#)
- [Flow Cytometry](#)
- [Cell Culture](#)

LTBP2 Antibody (monoclonal) (M01) - Images



Antibody Reactive Against Recombinant Protein. Western Blot detection against Immunogen (37.84 KDa) .



Detection limit for recombinant GST tagged LTBP2 is approximately 0.03ng/ml as a capture antibody.

LTBP2 Antibody (monoclonal) (M01) - Background

The protein encoded by this gene belongs to the family of latent transforming growth factor (TGF)-beta binding proteins (LTBP), which are extracellular matrix proteins with multi-domain structure. This protein is the largest member of the LTBP family possessing unique regions and with most similarity to the fibrillins. It has thus been suggested that it may have multiple functions: as a member of the TGF-beta latent complex, as a structural component of microfibrils, and a role in cell adhesion.

LTBP2 Antibody (monoclonal) (M01) - References

A homozygous mutation in LTBP2 causes isolated microspherophakia. Kumar A, et al. Hum Genet, 2010 Oct. PMID 20617341. Interferon gamma receptor 2 gene variants are associated with liver fibrosis in patients with chronic hepatitis C infection. Nalpas B, et al. Gut, 2010 Aug. PMID 20587546. L-type voltage-dependent calcium channel alpha subunit 1C is a novel candidate gene associated with secondary hyperparathyroidism: an application of haplotype-based analysis for multiple linked single nucleotide polymorphisms. Yokoyama K, et al. Nephron Clin Pract, 2010. PMID 20424473. Association of genetic variants with hemorrhagic stroke in Japanese individuals. Yoshida

T, et al. Int J Mol Med, 2010 Apr. PMID 20198315. LTBP2 null mutations in an autosomal recessive ocular syndrome with megalocornea, spherophakia, and secondary glaucoma. D'sir J, et al. Eur J Hum Genet, 2010 Jul. PMID 20179738.