

**MACF1 Antibody (monoclonal) (M01)****Mouse monoclonal antibody raised against a partial recombinant MACF1.****Catalog # AT2757a****Specification**

---

**MACF1 Antibody (monoclonal) (M01) - Product Information**

Application	E
Primary Accession	<a href="#">O9UPN3</a>
Other Accession	<a href="#">BC007330</a>
Reactivity	Human
Host	Mouse
Clonality	Monoclonal
Isotype	IgG1 Kappa
Calculated MW	838308

**MACF1 Antibody (monoclonal) (M01) - Additional Information****Gene ID** 23499**Other Names**

Microtubule-actin cross-linking factor 1, isoforms 1/2/3/5, 620 kDa actin-binding protein, ABP620, Actin cross-linking family protein 7, Macrophin-1, Trabeculin-alpha, MACF1, ABP620, ACF7, KIAA0465, KIAA1251

**Target/Specificity**

MACF1 (AAH07330, 1 a.a. ~ 95 a.a) partial recombinant protein with GST tag. MW of the GST tag alone is 26 kDa.

**Dilution**

E~~N/A

**Format**

Clear, colorless solution in phosphate buffered saline, pH 7.2 .

**Storage**

Store at -20°C or lower. Aliquot to avoid repeated freezing and thawing.

**Precautions**

MACF1 Antibody (monoclonal) (M01) is for research use only and not for use in diagnostic or therapeutic procedures.

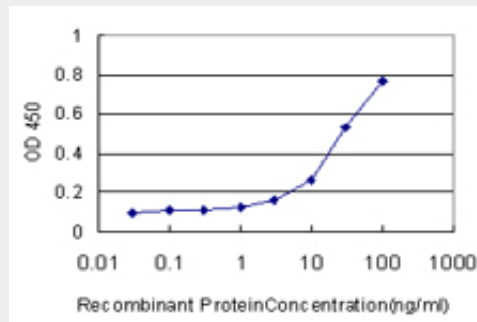
**MACF1 Antibody (monoclonal) (M01) - Protocols**

Provided below are standard protocols that you may find useful for product applications.

- [Western Blot](#)
- [Blocking Peptides](#)

- [Dot Blot](#)
- [Immunohistochemistry](#)
- [Immunofluorescence](#)
- [Immunoprecipitation](#)
- [Flow Cytometry](#)
- [Cell Culture](#)

### **MACF1 Antibody (monoclonal) (M01) - Images**



Detection limit for recombinant GST tagged MACF1 is approximately 1ng/ml as a capture antibody.

### **MACF1 Antibody (monoclonal) (M01) - Background**

The protein encoded by this gene belongs to the plakin family of cytoskeletal linker proteins. This protein family forms bridges between different cytoskeletal elements through specialized modular domains. The encoded protein is one of the largest size proteins identified in human cytoskeletal proteins. It has functional actin and microtubule binding domains, and it appears to stabilize actin at sites where microtubules and microfilaments meet. It may function in microtubule dynamics to facilitate actin-microtubule interactions at the cell periphery and to couple the microtubule network to cellular junctions. Alternatively spliced transcript variants encoding distinct isoforms have been described.

### **MACF1 Antibody (monoclonal) (M01) - References**

1. Laminin-based cell adhesion anchors microtubule plus ends to the epithelial cell basal cortex through LL5{alpha}/{beta}. Hotta A, Kawakatsu T, Nakatani T, Sato T, Matsui C, Sukezane T, Akagi T, Hamaji T, Grigoriev I, Akhmanova A, Takai Y, Mimori-Kiyosue Y. J Cell Biol. 2010 May 31;189(5):901-17.