

MAD2L1BP Antibody (monoclonal) (M03)**Mouse monoclonal antibody raised against a full-length recombinant MAD2L1BP.****Catalog # AT2759a****Specification**

MAD2L1BP Antibody (monoclonal) (M03) - Product Information

Application	WB, IF, E
Primary Accession	Q15013
Other Accession	BC002904
Reactivity	Human
Host	mouse
Clonality	Monoclonal
Isotype	IgG2a Kappa
Calculated MW	31052

MAD2L1BP Antibody (monoclonal) (M03) - Additional Information**Gene ID** 9587**Other Names**

MAD2L1-binding protein, Caught by MAD2 protein, MAD2L1BP, CMT2, KIAA0110

Target/Specificity

MAD2L1BP (AAH02904, 1 a.a. ~ 274 a.a) full-length recombinant protein with GST tag. MW of the GST tag alone is 26 KDa.

Dilution

WB~~1:500~1000

IF~~1:50~200

E~~N/A

Format

Clear, colorless solution in phosphate buffered saline, pH 7.2 .

Storage

Store at -20°C or lower. Aliquot to avoid repeated freezing and thawing.

Precautions

MAD2L1BP Antibody (monoclonal) (M03) is for research use only and not for use in diagnostic or therapeutic procedures.

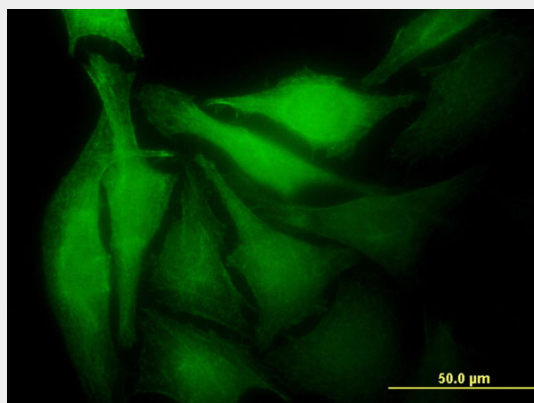
MAD2L1BP Antibody (monoclonal) (M03) - Protocols

Provided below are standard protocols that you may find useful for product applications.

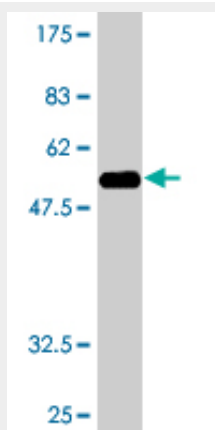
- [Western Blot](#)
- [Blocking Peptides](#)

- [Dot Blot](#)
- [Immunohistochemistry](#)
- [Immunofluorescence](#)
- [Immunoprecipitation](#)
- [Flow Cytometry](#)
- [Cell Culture](#)

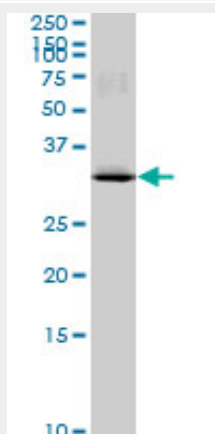
MAD2L1BP Antibody (monoclonal) (M03) - Images



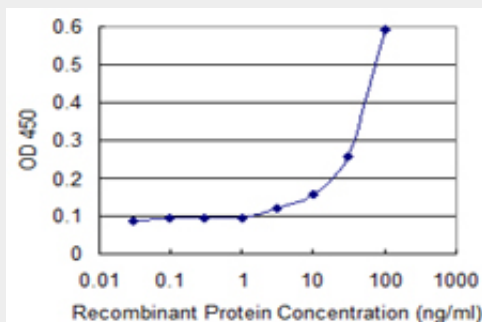
Immunofluorescence of monoclonal antibody to MAD2L1BP on HeLa cell . [antibody concentration 10 ug/ml]



Antibody Reactive Against Recombinant Protein. Western Blot detection against Immunogen (55.88 KDa) .



MAD2L1BP monoclonal antibody (M03), clone 4G11. Western Blot analysis of MAD2L1BP expression in Hela S3 NE (Cat # AT2759a)



Detection limit for recombinant GST tagged MAD2L1BP is 1 ng/ml as a capture antibody.

MAD2L1BP Antibody (monoclonal) (M03) - Background

The protein encoded by this gene was identified as a binding protein of the MAD2 mitotic arrest deficient-like 1 (MAD2/MAD2L1). MAD2 is a key component of the spindle checkpoint that delays the onset of anaphase until all the kinetochores are attached to the spindle. This protein may interact with the spindle checkpoint and coordinate cell cycle events in late mitosis. Alternatively spliced transcript variants encoding distinct isoforms have been observed.

MAD2L1BP Antibody (monoclonal) (M03) - References

p31comet Induces cellular senescence through p21 accumulation and Mad2 disruption. Yun M, et al. Mol Cancer Res, 2009 Mar. PMID 19276188. An empirical framework for binary interactome mapping. Venkatesan K, et al. Nat Methods, 2009 Jan. PMID 19060904. p31comet blocks Mad2 activation through structural mimicry. Yang M, et al. Cell, 2007 Nov 16. PMID 18022368. Mutation analysis of p31comet gene, a negative regulator of Mad2, in human hepatocellular carcinoma. Yun MY, et al. Exp Mol Med, 2007 Aug 31. PMID 17934339. Towards a proteome-scale map of the human protein-protein interaction network. Rual JF, et al. Nature, 2005 Oct 20. PMID 16189514.