

MAGI1 Antibody (monoclonal) (M03)**Mouse monoclonal antibody raised against a partial recombinant MAGI1.****Catalog # AT2763a****Specification**

MAGI1 Antibody (monoclonal) (M03) - Product Information

Application	WB, IF, E
Primary Accession	O96QZ7
Other Accession	NM_004742
Reactivity	Human, Rat
Host	mouse
Clonality	Monoclonal
Isotype	IgG1 Kappa
Calculated MW	164581

MAGI1 Antibody (monoclonal) (M03) - Additional Information**Gene ID** 9223**Other Names**

Membrane-associated guanylate kinase, WW and PDZ domain-containing protein 1, Atrophin-1-interacting protein 3, AIP-3, BAI1-associated protein 1, BAP-1, Membrane-associated guanylate kinase inverted 1, MAGI-1, Trinucleotide repeat-containing gene 19 protein, WW domain-containing protein 3, WWP3, MAGI1, AIP3, BAIAP1, BAP1, TNRC19

Target/Specificity

MAGI1 (NP_004733, 761 a.a. ~ 859 a.a) partial recombinant protein with GST tag. MW of the GST tag alone is 26 KDa.

Dilution

WB~~1:500~1000

IF~~1:50~200

E~~N/A

Format

Clear, colorless solution in phosphate buffered saline, pH 7.2 .

Storage

Store at -20°C or lower. Aliquot to avoid repeated freezing and thawing.

Precautions

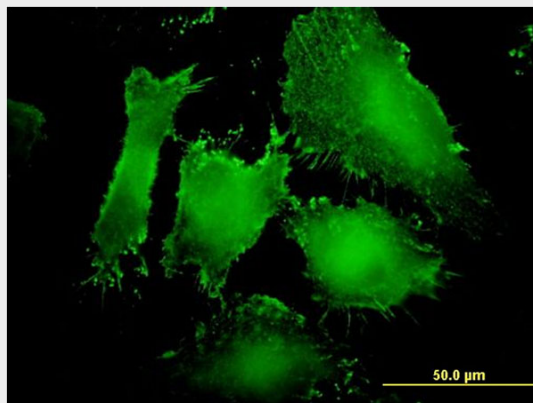
MAGI1 Antibody (monoclonal) (M03) is for research use only and not for use in diagnostic or therapeutic procedures.

MAGI1 Antibody (monoclonal) (M03) - Protocols

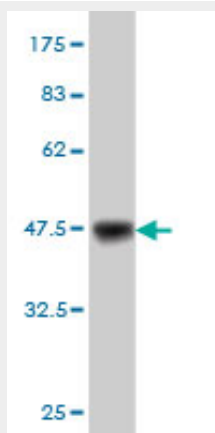
Provided below are standard protocols that you may find useful for product applications.

- [Western Blot](#)
- [Blocking Peptides](#)
- [Dot Blot](#)
- [Immunohistochemistry](#)
- [Immunofluorescence](#)
- [Immunoprecipitation](#)
- [Flow Cytometry](#)
- [Cell Culture](#)

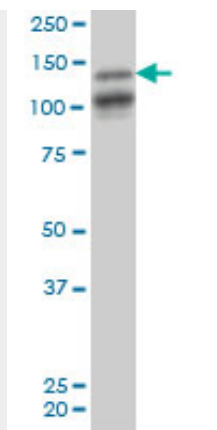
MAGI1 Antibody (monoclonal) (M03) - Images



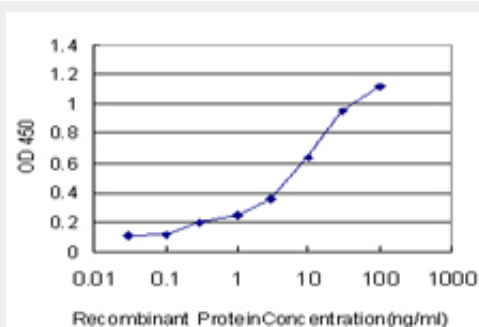
Immunofluorescence of monoclonal antibody to MAGI1 on HeLa cell. [antibody concentration 10 ug/ml]



Antibody Reactive Against Recombinant Protein. Western Blot detection against Immunogen (36.63 KDa) .



MAGI1 monoclonal antibody (M03), clone 7B4 Western Blot analysis of MAGI1 expression in PC-12 (Cat # AT2763a)



Detection limit for recombinant GST tagged MAGI1 is approximately 0.3ng/ml as a capture antibody.

MAGI1 Antibody (monoclonal) (M03) - Background

The protein encoded by this gene is a member of the membrane-associated guanylate kinase homologue (MAGUK) family. MAGUK proteins participate in the assembly of multiprotein complexes on the inner surface of the plasma membrane at regions of cell-cell contact. The product of this gene may play a role as scaffolding protein at cell-cell junctions. Alternatively spliced transcript variants encoding different isoforms have been identified.

MAGI1 Antibody (monoclonal) (M03) - References

1. MAGI-1, A Candidate Stereociliary Scaffolding Protein, Associates with the Tip-Link Component Cadherin 23. Xu Z, Peng AW, Oshima K, Heller S. J Neurosci. 2008 Oct 29;28(44):11269-76.