

**MAP2K5 Antibody (monoclonal) (M11)****Mouse monoclonal antibody raised against a partial recombinant MAP2K5.****Catalog # AT2772a****Specification**

---

**MAP2K5 Antibody (monoclonal) (M11) - Product Information**

Application	WB, IF, E
Primary Accession	<a href="#">Q13163</a>
Other Accession	<a href="#">BC008838</a>
Reactivity	Human
Host	mouse
Clonality	Monoclonal
Isotype	IgG1 Kappa
Calculated MW	50112

**MAP2K5 Antibody (monoclonal) (M11) - Additional Information****Gene ID** 5607**Other Names**

Dual specificity mitogen-activated protein kinase kinase 5, MAP kinase kinase 5, MAPKK 5, MAPK/ERK kinase 5, MEK 5, MAP2K5, MEK5, MKK5, PRKMK5

**Target/Specificity**

MAP2K5 (AAH08838, 1 a.a. ~ 120 a.a) partial recombinant protein with GST tag. MW of the GST tag alone is 26 KDa.

**Dilution**

WB~~1:500~1000

IF~~1:50~200

E~~N/A

**Format**

Clear, colorless solution in phosphate buffered saline, pH 7.2 .

**Storage**

Store at -20°C or lower. Aliquot to avoid repeated freezing and thawing.

**Precautions**

MAP2K5 Antibody (monoclonal) (M11) is for research use only and not for use in diagnostic or therapeutic procedures.

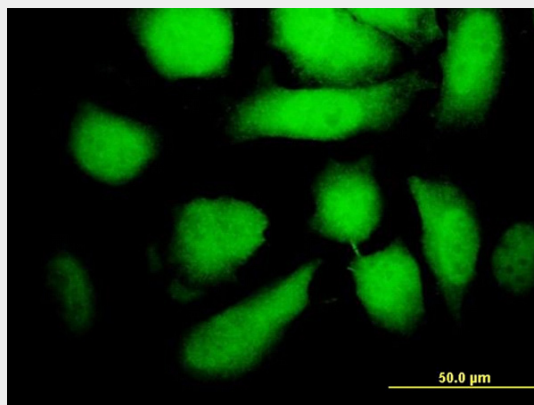
**MAP2K5 Antibody (monoclonal) (M11) - Protocols**

Provided below are standard protocols that you may find useful for product applications.

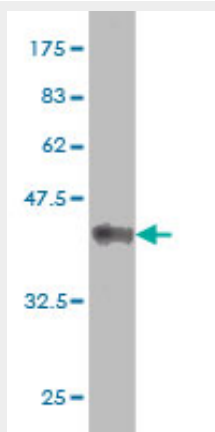
- [Western Blot](#)

- [Blocking Peptides](#)
- [Dot Blot](#)
- [Immunohistochemistry](#)
- [Immunofluorescence](#)
- [Immunoprecipitation](#)
- [Flow Cytometry](#)
- [Cell Culture](#)

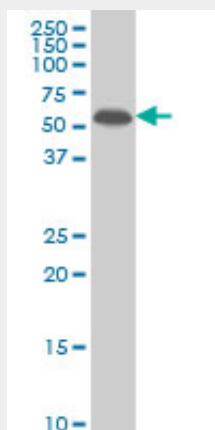
### MAP2K5 Antibody (monoclonal) (M11) - Images



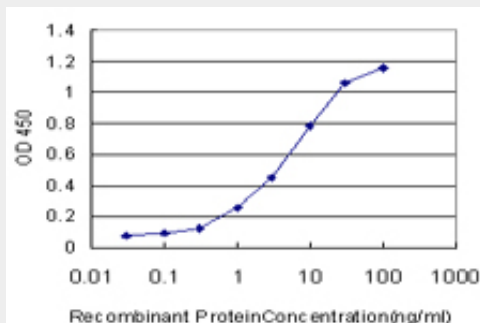
Immunofluorescence of monoclonal antibody to MAP2K5 on HeLa cell. [antibody concentration 10 ug/ml]



Antibody Reactive Against Recombinant Protein. Western Blot detection against Immunogen (38.83 KDa) .



MAP2K5 monoclonal antibody (M11), clone 3E10 Western Blot analysis of MAP2K5 expression in Jurkat (Cat # AT2772a)



Detection limit for recombinant GST tagged MAP2K5 is approximately 0.1ng/ml as a capture antibody.

### MAP2K5 Antibody (monoclonal) (M11) - Background

The protein encoded by this gene is a dual specificity protein kinase that belongs to the MAP kinase kinase family. This kinase specifically interacts with and activates MAPK7/ERK5. This kinase itself can be phosphorylated and activated by MAP3K3/MEKK3, as well as by atypical protein kinase C isoforms (aPKCs). The signal cascade mediated by this kinase is involved in growth factor stimulated cell proliferation and muscle cell differentiation. Four alternatively spliced transcript variants of this gene encoding distinct isoforms have been described.

### MAP2K5 Antibody (monoclonal) (M11) - References

Variation at the NFATC2 Locus Increases the Risk of Thiazolinedione-Induced Edema in the Diabetes REduction Assessment with ramipril and rosiglitazone Medication (DREAM) Study. Bailey SD, et al. Diabetes Care, 2010 Jul 13. PMID 20628086. Genotyping sleep disorders patients. Kripke DF, et al. Psychiatry Investig, 2010 Mar. PMID 20396431. Gene-centric association signals for lipids and apolipoproteins identified via the HumanCVD BeadChip. Talmud PJ, et al. Am J Hum Genet, 2009 Nov. PMID 19913121. Association of intronic variants of the BTBD9 gene with Tourette syndrome. Riviere JB, et al. Arch Neurol, 2009 Oct. PMID 19822783. MEK5/ERK5 signaling modulates endothelial cell migration and focal contact turnover. Spiering D, et al. J Biol Chem, 2009 Sep 11. PMID 19605361.