

**MAP2K6 Antibody (monoclonal) (M02)****Mouse monoclonal antibody raised against a partial recombinant MAP2K6.****Catalog # AT2773a****Specification**

---

**MAP2K6 Antibody (monoclonal) (M02) - Product Information**

Application	WB, IF, E
Primary Accession	<a href="#">P52564</a>
Other Accession	<a href="#">BC012009</a>
Reactivity	Human
Host	mouse
Clonality	Monoclonal
Isotype	IgG2a Kappa
Calculated MW	37492

**MAP2K6 Antibody (monoclonal) (M02) - Additional Information****Gene ID** 5608**Other Names**

Dual specificity mitogen-activated protein kinase kinase 6, MAP kinase kinase 6, MAPKK 6, MAPK/ERK kinase 6, MEK 6, Stress-activated protein kinase kinase 3, SAPK kinase 3, SAPKK-3, SAPKK3, MAP2K6, MEK6, MKK6, PRKMK6, SKK3

**Target/Specificity**

MAP2K6 (AAH12009, 231 a.a. ~ 334 a.a) partial recombinant protein with GST tag. MW of the GST tag alone is 26 KDa.

**Dilution**

WB~~1:500~1000

IF~~1:50~200

E~~N/A

**Format**

Clear, colorless solution in phosphate buffered saline, pH 7.2 .

**Storage**

Store at -20°C or lower. Aliquot to avoid repeated freezing and thawing.

**Precautions**

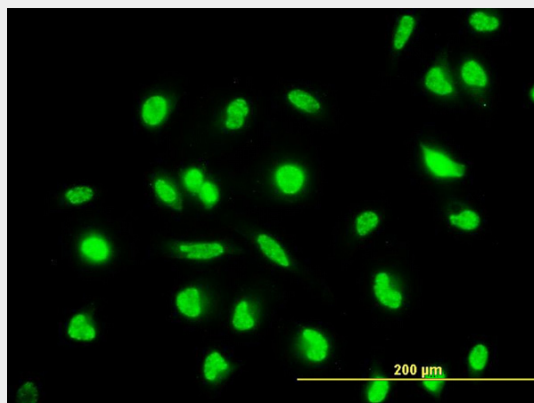
MAP2K6 Antibody (monoclonal) (M02) is for research use only and not for use in diagnostic or therapeutic procedures.

**MAP2K6 Antibody (monoclonal) (M02) - Protocols**

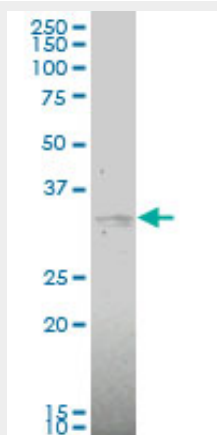
Provided below are standard protocols that you may find useful for product applications.

- [Western Blot](#)
- [Blocking Peptides](#)
- [Dot Blot](#)
- [Immunohistochemistry](#)
- [Immunofluorescence](#)
- [Immunoprecipitation](#)
- [Flow Cytometry](#)
- [Cell Culture](#)

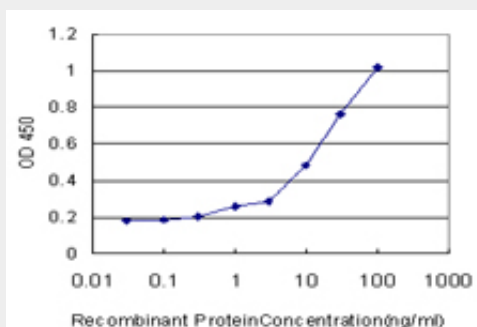
## MAP2K6 Antibody (monoclonal) (M02) - Images



Immunofluorescence of monoclonal antibody to MAP2K6 on HeLa cell. [antibody concentration 10 ug/ml]

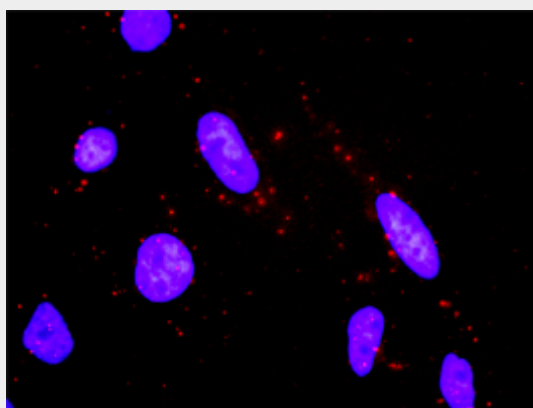


MAP2K6 monoclonal antibody (M02), clone 2F2 Western Blot analysis of MAP2K6 expression in COLO 320 HSR ( Cat # L020V1 ).



Detection limit for recombinant GST tagged MAP2K6 is approximately 0.3ng/ml as a capture

antibody.



Proximity Ligation Analysis of protein-protein interactions between MAP2K3 and MAP2K6 HeLa cells were stained with anti-MAP2K3 rabbit purified polyclonal 1:1200 and anti-MAP2K6 mouse monoclonal antibody 1:50. Each red dot represents the detection of protein-protein interaction complex, and nuclei were counterstained with DAPI (blue).

#### **MAP2K6 Antibody (monoclonal) (M02) - Background**

This gene encodes a member of the dual specificity protein kinase family, which functions as a mitogen-activated protein (MAP) kinase kinase. MAP kinases, also known as extracellular signal-regulated kinases (ERKs), act as an integration point for multiple biochemical signals. This protein phosphorylates and activates p38 MAP kinase in response to inflammatory cytokines or environmental stress. As an essential component of p38 MAP kinase mediated signal transduction pathway, this gene is involved in many cellular processes such as stress induced cell cycle arrest, transcription activation and apoptosis.

#### **MAP2K6 Antibody (monoclonal) (M02) - References**

Variation at the NFATC2 Locus Increases the Risk of Thiazolinedione-Induced Edema in the Diabetes REduction Assessment with ramipril and rosiglitazone Medication (DREAM) Study. Bailey SD, et al. Diabetes Care, 2010 Jul 13. PMID 20628086. Mechanism of oxidative stress-induced ASK1-catalyzed MKK6 phosphorylation. Sturchler E, et al. Biochemistry, 2010 May 18. PMID 20364819. Activin A induction of erythroid differentiation through MKK6-p38alpha/p38beta pathway is inhibited by follistatin. Huang HM, et al. J Cell Physiol, 2010 Jun. PMID 20162623. Gene-centric association signals for lipids and apolipoproteins identified via the HumanCVD BeadChip. Talmud PJ, et al. Am J Hum Genet, 2009 Nov. PMID 19913121. Activation of the p38 Map kinase pathway is essential for the antileukemic effects of dasatinib. Dumka D, et al. Leuk Lymphoma, 2009 Dec. PMID 19672773.