

MARK2 Antibody (monoclonal) (M01)

Mouse monoclonal antibody raised against a partial recombinant MARK2.

Catalog # AT2804a

Specification

MARK2 Antibody (monoclonal) (M01) - Product Information

Application	WB, E
Primary Accession	O7KZ17
Other Accession	BC008771
Reactivity	Human, Mouse, Rat
Host	mouse
Clonality	Monoclonal
Isotype	IgG2a Kappa
Calculated MW	87911

MARK2 Antibody (monoclonal) (M01) - Additional Information

Gene ID 2011

Other Names

Serine/threonine-protein kinase MARK2, ELKL motif kinase 1, EMK-1, MAP/microtubule affinity-regulating kinase 2, PAR1 homolog, PAR1 homolog b, Par-1b, Par1b, MARK2 {ECO:0000312|EMBL:AAH087712}, EMK1

Target/Specificity

MARK2 (AAH08771, 401 a.a. ~ 500 a.a) partial recombinant protein with GST tag. MW of the GST tag alone is 26 KDa.

Dilution

WB~~1:500~1000

E~~N/A

Format

Clear, colorless solution in phosphate buffered saline, pH 7.2 .

Storage

Store at -20°C or lower. Aliquot to avoid repeated freezing and thawing.

Precautions

MARK2 Antibody (monoclonal) (M01) is for research use only and not for use in diagnostic or therapeutic procedures.

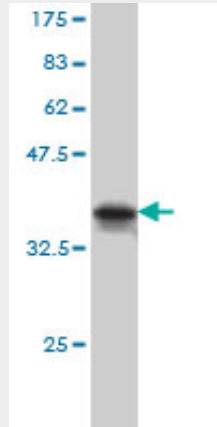
MARK2 Antibody (monoclonal) (M01) - Protocols

Provided below are standard protocols that you may find useful for product applications.

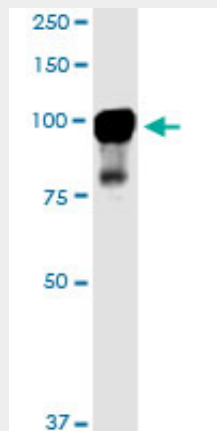
- [Western Blot](#)

- [Blocking Peptides](#)
- [Dot Blot](#)
- [Immunohistochemistry](#)
- [Immunofluorescence](#)
- [Immunoprecipitation](#)
- [Flow Cytometry](#)
- [Cell Culture](#)

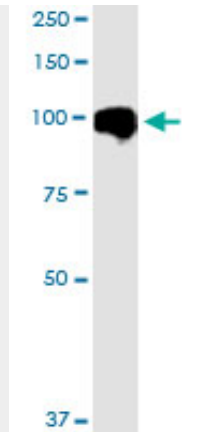
MARK2 Antibody (monoclonal) (M01) - Images



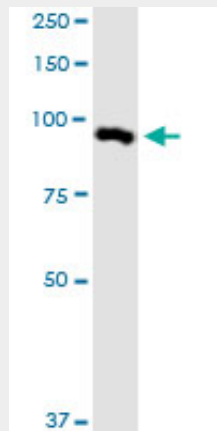
Antibody Reactive Against Recombinant Protein. Western Blot detection against Immunogen (36.63 KDa) .



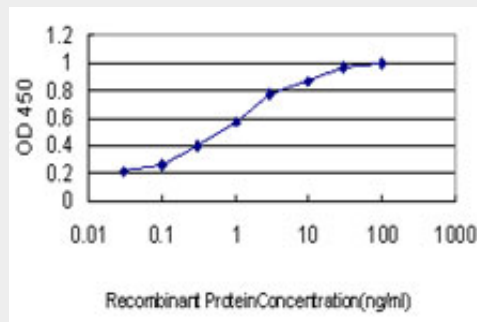
MARK2 monoclonal antibody (M01), clone 3B12. Western Blot analysis of MARK2 expression in PC-12.



MARK2 monoclonal antibody (M01), clone 3B12. Western Blot analysis of MARK2 expression in A-431.



MARK2 monoclonal antibody (M01), clone 3B12. Western Blot analysis of MARK2 expression in NIH/3T3.



Detection limit for recombinant GST tagged MARK2 is approximately 0.03ng/ml as a capture antibody.

MARK2 Antibody (monoclonal) (M01) - Background

This gene encodes a member of the Par-1 family of serine/threonine protein kinases. The protein is an important regulator of cell polarity in epithelial and neuronal cells, and also controls the stability of microtubules through phosphorylation and inactivation of several microtubule-associating proteins. The protein localizes to cell membranes. Multiple transcript variants encoding different isoforms have been found for this gene.

MARK2 Antibody (monoclonal) (M01) - References

1. Pancreatic LKB1 deletion leads to acinar polarity defects and cystic neoplasms. Hezel AF, Gurumurthy S, Granot Z, Swisa A, Chu GC, Bailey G, Dor Y, Bardeesy N, Depinho RA. *Mol Cell Biol.* 2008 Apr;28(7):2414-25. Epub 2008 Jan 28.