

MCCC1 Antibody (monoclonal) (M01)**Mouse monoclonal antibody raised against a partial recombinant MCCC1.****Catalog # AT2816a****Specification**

MCCC1 Antibody (monoclonal) (M01) - Product Information

Application	WB, E
Primary Accession	O96RQ3
Other Accession	NM_020166
Reactivity	Human
Host	mouse
Clonality	Monoclonal
Isotype	IgG2a Kappa
Calculated MW	80473

MCCC1 Antibody (monoclonal) (M01) - Additional Information**Gene ID** 56922**Other Names**

Methylcrotonoyl-CoA carboxylase subunit alpha, mitochondrial, MCCase subunit alpha, 3-methylcrotonyl-CoA carboxylase 1, 3-methylcrotonyl-CoA carboxylase biotin-containing subunit, 3-methylcrotonyl-CoA:carbon dioxide ligase subunit alpha, MCCC1, MCCA

Target/Specificity

MCCC1 (NP_064551, 526 a.a. ~ 625 a.a) partial recombinant protein with GST tag. MW of the GST tag alone is 26 KDa.

Dilution

WB~~1:500~1000

E~~N/A

Format

Clear, colorless solution in phosphate buffered saline, pH 7.2 .

Storage

Store at -20°C or lower. Aliquot to avoid repeated freezing and thawing.

Precautions

MCCC1 Antibody (monoclonal) (M01) is for research use only and not for use in diagnostic or therapeutic procedures.

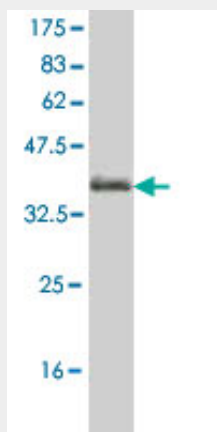
MCCC1 Antibody (monoclonal) (M01) - Protocols

Provided below are standard protocols that you may find useful for product applications.

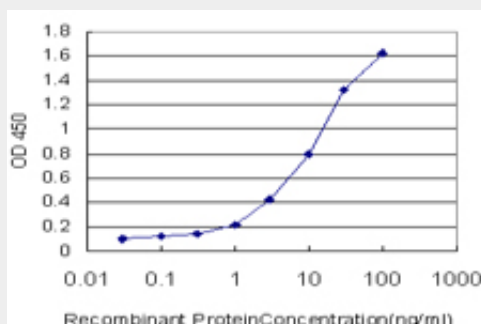
- [Western Blot](#)

- [Blocking Peptides](#)
- [Dot Blot](#)
- [Immunohistochemistry](#)
- [Immunofluorescence](#)
- [Immunoprecipitation](#)
- [Flow Cytometry](#)
- [Cell Culture](#)

MCCC1 Antibody (monoclonal) (M01) - Images



Antibody Reactive Against Recombinant Protein. Western Blot detection against Immunogen (36.74 KDa) .



Detection limit for recombinant GST tagged MCCC1 is approximately 0.1ng/ml as a capture antibody.

MCCC1 Antibody (monoclonal) (M01) - Background

This gene encodes the large subunit of 3-methylcrotonyl-CoA carboxylase. This enzyme functions as a heterodimer and catalyzes the carboxylation of 3-methylcrotonyl-CoA to form 3-methylglutaconyl-CoA. Mutations in this gene are associated with 3-Methylcrotonylglycinuria, an autosomal recessive disorder of leucine catabolism.

MCCC1 Antibody (monoclonal) (M01) - References

Personalized smoking cessation: interactions between nicotine dose, dependence and quit-success genotype score. Rose JE, et al. Mol Med, 2010 Jul-Aug. PMID 20379614. Cryptic exon activation by disruption of exon splice enhancer: novel mechanism causing 3-methylcrotonyl-CoA carboxylase deficiency. Stucki M, et al. J Biol Chem, 2009 Oct 16. PMID 19706617. 3-Methylcrotonyl-CoA carboxylase deficiency: phenotypic variability in a family. Eminoglu FT, et al. J Child Neurol, 2009 Apr. PMID 19339287. Toward a confocal subcellular atlas of the human proteome. Barbe L, et al. Mol Cell Proteomics, 2008 Mar. PMID 18029348. Novel mutations in five Japanese patients with

3-methylcrotonyl-CoA carboxylase deficiency. Uematsu M, et al. J Hum Genet, 2007. PMID 17968484.