

MCF2L Antibody (monoclonal) (M01)

Mouse monoclonal antibody raised against a partial recombinant MCF2L.

Catalog # AT2817a

Specification

MCF2L Antibody (monoclonal) (M01) - Product Information

Application	WB, IHC, E
Primary Accession	O15068
Other Accession	BC020208
Reactivity	Human
Host	mouse
Clonality	Monoclonal
Isotype	IgG1 Kappa
Calculated MW	128109

MCF2L Antibody (monoclonal) (M01) - Additional Information

Gene ID 23263

Other Names

Guanine nucleotide exchange factor DBS, DBL's big sister, MCF2-transforming sequence-like protein, MCF2L, KIAA0362

Target/Specificity

MCF2L (AAH20208, 220 a.a. ~ 319 a.a) partial recombinant protein with GST tag. MW of the GST tag alone is 26 KDa.

Dilution

WB~~1:500~1000

IHC~~1:100~500

E~~N/A

Format

Clear, colorless solution in phosphate buffered saline, pH 7.2 .

Storage

Store at -20°C or lower. Aliquot to avoid repeated freezing and thawing.

Precautions

MCF2L Antibody (monoclonal) (M01) is for research use only and not for use in diagnostic or therapeutic procedures.

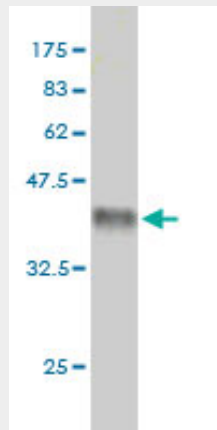
MCF2L Antibody (monoclonal) (M01) - Protocols

Provided below are standard protocols that you may find useful for product applications.

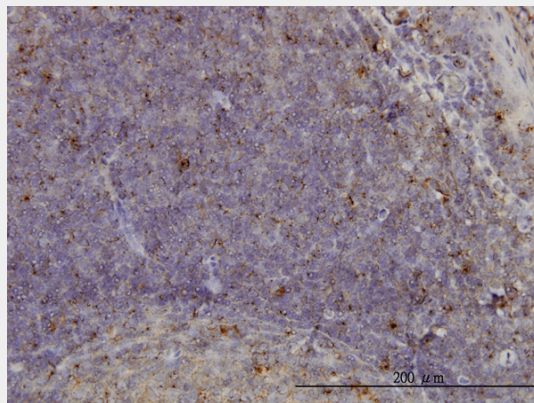
- [Western Blot](#)

- [Blocking Peptides](#)
- [Dot Blot](#)
- [Immunohistochemistry](#)
- [Immunofluorescence](#)
- [Immunoprecipitation](#)
- [Flow Cytometry](#)
- [Cell Culture](#)

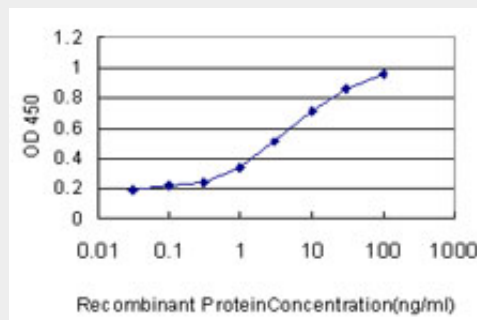
MCF2L Antibody (monoclonal) (M01) - Images



Antibody Reactive Against Recombinant Protein. Western Blot detection against Immunogen (36.74 KDa) .



Immunoperoxidase of monoclonal antibody to MCF2L on formalin-fixed paraffin-embedded human tonsil. [antibody concentration 1 ug/ml]



Detection limit for recombinant GST tagged MCF2L is approximately 0.03ng/ml as a capture antibody.

MCF2L Antibody (monoclonal) (M01) - References

Personalized smoking cessation: interactions between nicotine dose, dependence and quit-success genotype score. Rose JE, et al. Mol Med, 2010 Jul-Aug. PMID 20379614. Mutation of ARHGAP9 in patients with coronary spastic angina. Takefuji M, et al. J Hum Genet, 2010 Jan. PMID 19911011. Toward a confocal subcellular atlas of the human proteome. Barbe L, et al. Mol Cell Proteomics, 2008 Mar. PMID 18029348. Genome-wide association and linkage analyses of hemostatic factors and hematological phenotypes in the Framingham Heart Study. Yang Q, et al. BMC Med Genet, 2007 Sep 19. PMID 17903294. Role of the guanine nucleotide exchange factor Ost in negative regulation of receptor endocytosis by the small GTPase Rac1. Ieguchi K, et al. J Biol Chem, 2007 Aug 10. PMID 17562712.