

MCM2 Antibody (monoclonal) (M01)
Mouse monoclonal antibody raised against a partial recombinant MCM2.
Catalog # AT2818a

Specification

MCM2 Antibody (monoclonal) (M01) - Product Information

Application	WB, IF, IP, E
Primary Accession	P49736
Other Accession	BC007670
Reactivity	Human
Host	mouse
Clonality	Monoclonal
Isotype	IgG2a Kappa
Calculated MW	101896

MCM2 Antibody (monoclonal) (M01) - Additional Information

Gene ID 4171

Other Names

DNA replication licensing factor MCM2, Minichromosome maintenance protein 2 homolog, Nuclear protein BM28, MCM2, BM28, CCNL1, CDCL1, KIAA0030

Target/Specificity

MCM2 (AAH07670, 805 a.a. ~ 904 a.a) partial recombinant protein with GST tag. MW of the GST tag alone is 26 KDa.

Dilution

WB~~1:500~1000
IF~~1:50~200
IP~~N/A
E~~N/A

Format

Clear, colorless solution in phosphate buffered saline, pH 7.2 .

Storage

Store at -20°C or lower. Aliquot to avoid repeated freezing and thawing.

Precautions

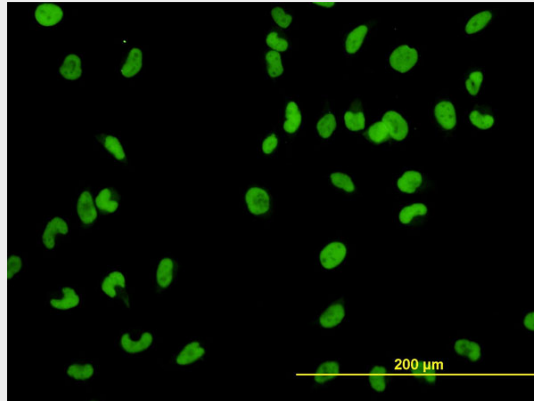
MCM2 Antibody (monoclonal) (M01) is for research use only and not for use in diagnostic or therapeutic procedures.

MCM2 Antibody (monoclonal) (M01) - Protocols

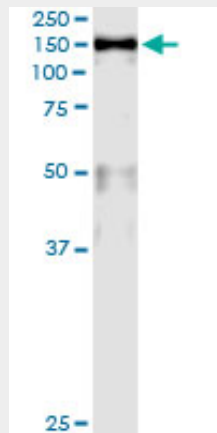
Provided below are standard protocols that you may find useful for product applications.

- [Western Blot](#)
- [Blocking Peptides](#)
- [Dot Blot](#)
- [Immunohistochemistry](#)
- [Immunofluorescence](#)
- [Immunoprecipitation](#)
- [Flow Cytometry](#)
- [Cell Culture](#)

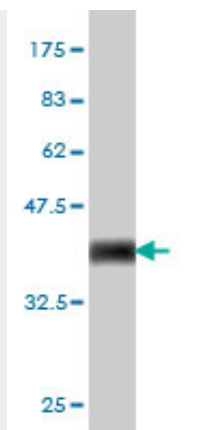
MCM2 Antibody (monoclonal) (M01) - Images



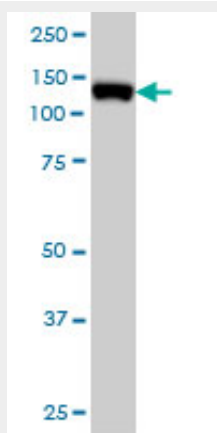
Immunofluorescence of monoclonal antibody to MCM2 on HeLa cell. [antibody concentration 10 ug/ml]



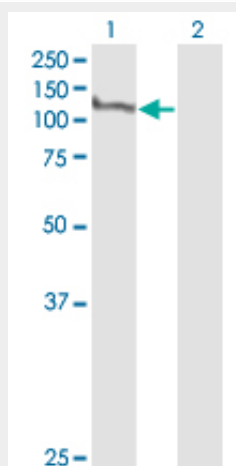
Immunoprecipitation of MCM2 transfected lysate using anti-MCM2 monoclonal antibody and Protein A Magnetic Bead ([U0007](#)), and immunoblotted with MCM2 MaxPab rabbit polyclonal antibody.



Antibody Reactive Against Recombinant Protein. Western Blot detection against Immunogen (36.63 KDa) .

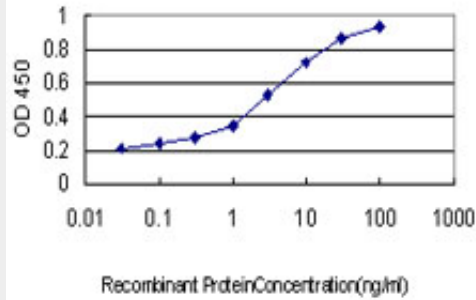


MCM2 monoclonal antibody (M01), clone 6A8 Western Blot analysis of MCM2 expression in HeLa S3 NE ((Cat # AT2818a)



Western Blot analysis of MCM2 expression in transfected 293T cell line by MCM2 monoclonal antibody (M01), clone 6A8.

Lane 1: MCM2 transfected lysate(101.9 KDa).
Lane 2: Non-transfected lysate.



Detection limit for recombinant GST tagged MCM2 is approximately 0.1ng/ml as a capture antibody.

MCM2 Antibody (monoclonal) (M01) - Background

The protein encoded by this gene is one of the highly conserved mini-chromosome maintenance proteins (MCM) that are involved in the initiation of eukaryotic genome replication. The hexameric protein complex formed by MCM proteins is a key component of the pre-replication complex (pre_RC) and may be involved in the formation of replication forks and in the recruitment of other DNA replication related proteins. This protein forms a complex with MCM4, 6, and 7, and has been shown to regulate the helicase activity of the complex. This protein is phosphorylated, and thus regulated by, protein kinases CDC2 and CDC7.

MCM2 Antibody (monoclonal) (M01) - References

Immunohistochemical patterns of ProEx C in vulvar squamous lesions: detection of overexpression of MCM2 and TOP2A. Chen H, et al. *Am J Surg Pathol*, 2010 Sep. PMID 20697251. Evaluation of candidate stromal epithelial cross-talk genes identifies association between risk of serous ovarian cancer and TERT, a cancer susceptibility hot-spot. Johnatty SE, et al. *PLoS Genet*, 2010 Jul 8. PMID 20628624. Centrosome-related genes, genetic variation, and risk of breast cancer. Olson JE, et al. *Breast Cancer Res Treat*, 2010 May 28. PMID 20508983. Human cytomegalovirus protein pUL117 targets the mini-chromosome maintenance complex and suppresses cellular DNA synthesis. Qian Z, et al. *PLoS Pathog*, 2010 Mar 19. PMID 20333247. Determination of cell proliferation using Mcm2 antigen and evaluation of apoptosis and TGF-beta1 expression in GH-secreting or clinically nonfunctioning pituitary adenomas. Dallago CM, et al. *Endocr Pathol*, 2010 Mar. PMID 20174894.