

**MDH1 Antibody (monoclonal) (M01)****Mouse monoclonal antibody raised against a full length recombinant MDH1.****Catalog # AT2825a****Specification**

---

**MDH1 Antibody (monoclonal) (M01) - Product Information**

Application	WB, E
Primary Accession	<a href="#">P40925</a>
Other Accession	<a href="#">BC001484</a>
Reactivity	Human
Host	mouse
Clonality	Monoclonal
Isotype	IgG2b Kappa
Calculated MW	36426

**MDH1 Antibody (monoclonal) (M01) - Additional Information****Gene ID** 4190**Other Names**

Malate dehydrogenase, cytoplasmic, Cytosolic malate dehydrogenase, Diiodophenylpyruvate reductase, MDH1, MDHA

**Target/Specificity**

MDH1 (AAH01484.1, 1 a.a. ~ 334 a.a) full-length recombinant protein with GST tag. MW of the GST tag alone is 26 KDa.

**Dilution**

WB~~1:500~1000

E~~N/A

**Format**

Clear, colorless solution in phosphate buffered saline, pH 7.2 .

**Storage**

Store at -20°C or lower. Aliquot to avoid repeated freezing and thawing.

**Precautions**

MDH1 Antibody (monoclonal) (M01) is for research use only and not for use in diagnostic or therapeutic procedures.

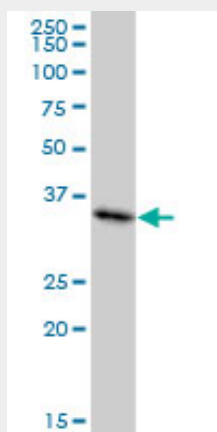
**MDH1 Antibody (monoclonal) (M01) - Protocols**

Provided below are standard protocols that you may find useful for product applications.

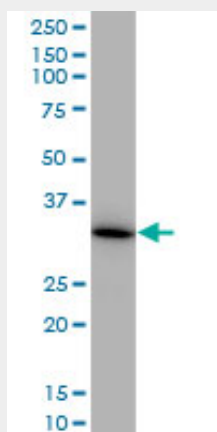
- [Western Blot](#)
- [Blocking Peptides](#)

- [Dot Blot](#)
- [Immunohistochemistry](#)
- [Immunofluorescence](#)
- [Immunoprecipitation](#)
- [Flow Cytometry](#)
- [Cell Culture](#)

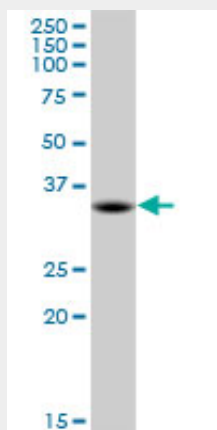
### MDH1 Antibody (monoclonal) (M01) - Images



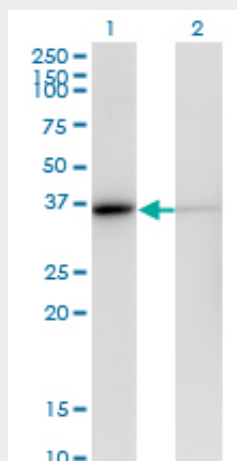
MDH1 monoclonal antibody (M01), clone 2B11-B7. Western Blot analysis of MDH1 expression in HeLa ( Cat # L013V1 ).



MDH1 monoclonal antibody (M01), clone 2B11-B7. Western Blot analysis of MDH1 expression in HepG2 ( (Cat # AT2825a )



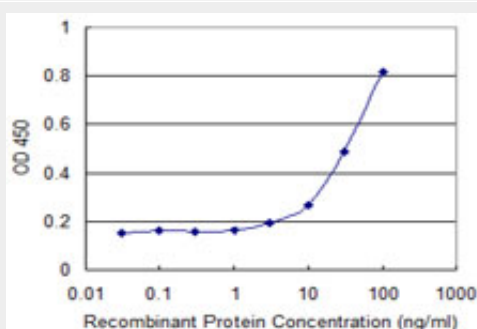
MDH1 monoclonal antibody (M01), clone 2B11-B7. Western Blot analysis of MDH1 expression in HL-60 (Cat # AT2825a)



Western Blot analysis of MDH1 expression in transfected 293T cell line by MDH1 monoclonal antibody (M01), clone 2B11-B7.

Lane 1: MDH1 transfected lysate(36.4 KDa).

Lane 2: Non-transfected lysate.



Detection limit for recombinant GST tagged MDH1 is approximately 3ng/ml as a capture antibody.

### **MDH1 Antibody (monoclonal) (M01) - Background**

Malate dehydrogenase catalyzes the reversible oxidation of malate to oxaloacetate, utilizing the NAD/NADH cofactor system in the citric acid cycle. The protein encoded by this gene is localized to the cytoplasm and may play pivotal roles in the malate-aspartate shuttle that operates in the metabolic coordination between cytosol and mitochondria.

### **MDH1 Antibody (monoclonal) (M01) - References**

Physiogenomic analysis of statin-treated patients: domain-specific counter effects within the ACACB gene on low-density lipoprotein cholesterol? Ruafo G, et al. Pharmacogenomics, 2010 Jul. PMID 20602615. Ultra high throughput sequencing excludes MDH1 as candidate gene for RP28-linked retinitis pigmentosa. Rio Frio T, et al. Mol Vis, 2009 Dec 8. PMID 20011630. A nucleocytoplasmic malate dehydrogenase regulates p53 transcriptional activity in response to metabolic stress. Lee SM, et al. Cell Death Differ, 2009 May. PMID 19229245. Proteomic analysis of dorsolateral prefrontal cortex indicates the involvement of cytoskeleton, oligodendrocyte, energy metabolism and new potential markers in schizophrenia. Martins-de-Souza D, et al. J Psychiatr Res, 2009 Jul. PMID 19110265. Physiogenomic comparison of edema and BMI in patients receiving rosiglitazone or pioglitazone. Ruafo G, et al. Clin Chim Acta, 2009 Feb. PMID 18996102.