

## MIF Antibody (monoclonal) (M01)

Mouse monoclonal antibody raised against a full length recombinant MIF.

Catalog # AT2870a

### Specification

---

#### MIF Antibody (monoclonal) (M01) - Product Information

Application	WB, IHC, IP, E
Primary Accession	<a href="#">P14174</a>
Other Accession	<a href="#">BC000447</a>
Reactivity	Human
Host	mouse
Clonality	Monoclonal
Isotype	IgG1 Kappa
Calculated MW	12476

#### MIF Antibody (monoclonal) (M01) - Additional Information

Gene ID 4282

#### Other Names

Macrophage migration inhibitory factor, MIF, Glycosylation-inhibiting factor, GIF, L-dopachrome isomerase, L-dopachrome tautomerase, Phenylpyruvate tautomerase, MIF, GLIF, MMIF

#### Target/Specificity

MIF (AAH00447.1, 1 a.a. ~ 115 a.a) full-length recombinant protein with GST tag. MW of the GST tag alone is 26 KDa.

#### Dilution

WB~~1:500~1000  
IHC~~1:100~500  
IP~~N/A  
E~~N/A

#### Format

Clear, colorless solution in phosphate buffered saline, pH 7.2 .

#### Storage

Store at -20°C or lower. Aliquot to avoid repeated freezing and thawing.

#### Precautions

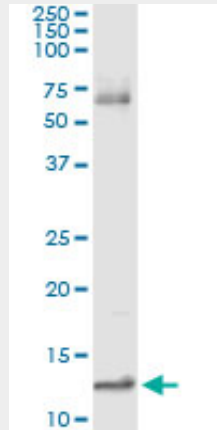
MIF Antibody (monoclonal) (M01) is for research use only and not for use in diagnostic or therapeutic procedures.

#### MIF Antibody (monoclonal) (M01) - Protocols

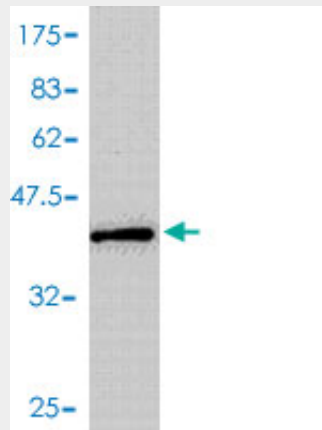
Provided below are standard protocols that you may find useful for product applications.

- [Western Blot](#)
- [Blocking Peptides](#)
- [Dot Blot](#)
- [Immunohistochemistry](#)
- [Immunofluorescence](#)
- [Immunoprecipitation](#)
- [Flow Cytometry](#)
- [Cell Culture](#)

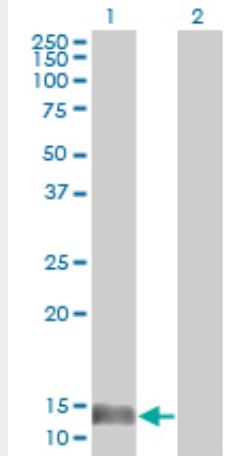
### MIF Antibody (monoclonal) (M01) - Images



Immunoprecipitation of MIF transfected lysate using anti-MIF monoclonal antibody and Protein A Magnetic Bead ([U0007](#)), and immunoblotted with MIF MaxPab rabbit polyclonal antibody.

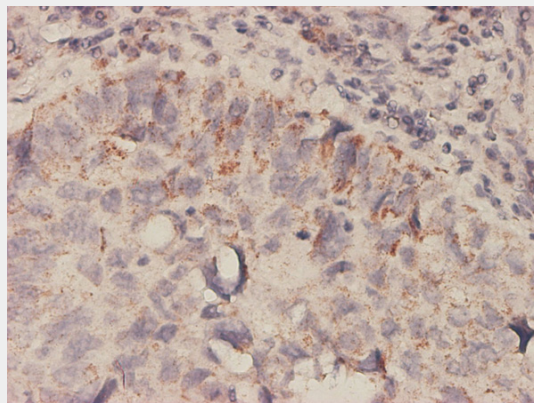


Antibody Reactive Against Recombinant Protein. Western Blot detection against Immunogen (38.39 KDa) .

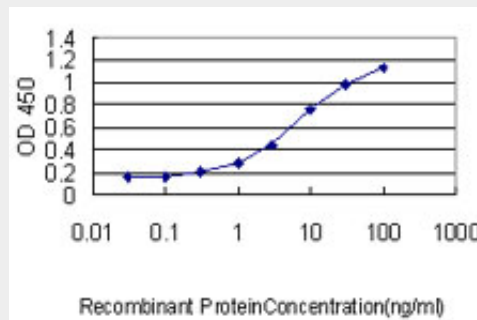


Western Blot analysis of MIF expression in transfected 293T cell line by MIF monoclonal antibody (M01), clone 2A10-4D3.

Lane 1: MIF transfected lysate(12.5 KDa).  
 Lane 2: Non-transfected lysate.



Immunoperoxidase of monoclonal antibody to MIF on formalin-fixed paraffin-embedded human lung, adenocarcinoma tissue. [antibody concentration 1 ~ 10 ug/ml]



Detection limit for recombinant GST tagged MIF is approximately 0.1ng/ml as a capture antibody.

### MIF Antibody (monoclonal) (M01) - Background

This gene encodes a lymphokine involved in cell-mediated immunity, immunoregulation, and inflammation. It plays a role in the regulation of macrophage function in host defense through the suppression of anti-inflammatory effects of glucocorticoids. This lymphokine and the JAB1 protein form a complex in the cytosol near the peripheral plasma membrane, which may indicate an additional role in integrin signaling pathways.

## **MIF Antibody (monoclonal) (M01) - References**

1. An HLA-Presented Fragment of Macrophage Migration Inhibitory Factor Is a Therapeutic Target for Invasive Breast Cancer. Hawkins O, Verma B, Lightfoot S, Jain R, Rawat A, McNair S, Caseltine S, Mojsilovic A, Gupta P, Neethling F, Almanza O, Dooley W, Hildebrand W, Weidanz J. J Immunol. 2011 Apr 22. [Epub ahead of print]

2. eIF3m expression influences the regulation of tumorigenesis-related genes in human colon cancer. Goh SH, Hong SH, Hong SH, Lee BC, Ju MH, Jeong JS, Cho YR, Kim IH, Lee YS. Oncogene. 2010 Sep 13. [Epub ahead of print]