

MLC1SA Antibody (monoclonal) (M01)**Mouse monoclonal antibody raised against a partial recombinant MLC1SA.****Catalog # AT2877a****Specification**

MLC1SA Antibody (monoclonal) (M01) - Product Information

Application	WB, E
Primary Accession	P14649
Other Accession	NM_002475
Reactivity	Human
Host	mouse
Clonality	Monoclonal
Isotype	IgG2b Kappa
Calculated MW	22764

MLC1SA Antibody (monoclonal) (M01) - Additional Information**Gene ID** 140465**Other Names**

Myosin light chain 6B, Myosin light chain 1 slow-twitch muscle A isoform, MLC1sa, Smooth muscle and nonmuscle myosin light chain alkali 6B, MYL6B, MLC1SA

Target/Specificity

MLC1SA (NP_002466, 109 a.a. ~ 208 a.a) partial recombinant protein with GST tag. MW of the GST tag alone is 26 KDa.

Dilution

WB~~1:500~1000

E~~N/A

Format

Clear, colorless solution in phosphate buffered saline, pH 7.2 .

Storage

Store at -20°C or lower. Aliquot to avoid repeated freezing and thawing.

Precautions

MLC1SA Antibody (monoclonal) (M01) is for research use only and not for use in diagnostic or therapeutic procedures.

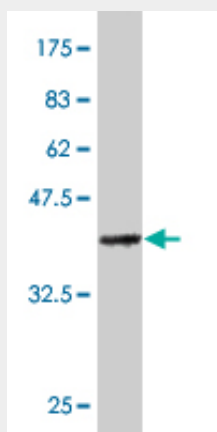
MLC1SA Antibody (monoclonal) (M01) - Protocols

Provided below are standard protocols that you may find useful for product applications.

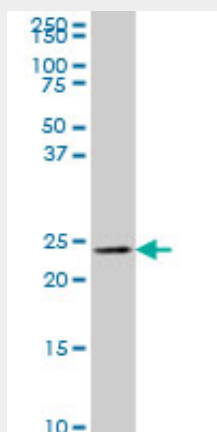
- [Western Blot](#)
- [Blocking Peptides](#)

- [Dot Blot](#)
- [Immunohistochemistry](#)
- [Immunofluorescence](#)
- [Immunoprecipitation](#)
- [Flow Cytometry](#)
- [Cell Culture](#)

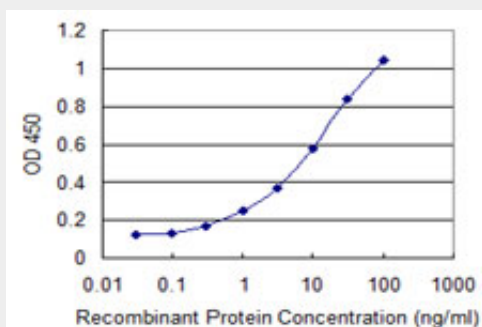
MLC1SA Antibody (monoclonal) (M01) - Images



Antibody Reactive Against Recombinant Protein. Western Blot detection against Immunogen (36.74 kDa) .



MLC1SA monoclonal antibody (M01), clone 4G11 Western Blot analysis of MLC1SA expression in K-562 (Cat # AT2877a)



Detection limit for recombinant GST tagged MYL6B is 0.1 ng/ml as a capture antibody.

MLC1SA Antibody (monoclonal) (M01) - Background

Myosin is a hexameric ATPase cellular motor protein. It is composed of two heavy chains, two nonphosphorylatable alkali light chains, and two phosphorylatable regulatory light chains. This gene encodes a myosin alkali light chain expressed in both slow-twitch skeletal muscle and in nonmuscle tissue.

MLC1SA Antibody (monoclonal) (M01) - References

IQ motif selectivity in human IQGAP1: binding of myosin essential light chain and S100B. Pathmanathan S, et al. Mol Cell Biochem, 2008 Nov. PMID 18587628. Three myosin V structures delineate essential features of chemo-mechanical transduction. Coureux PD, et al. EMBO J, 2004 Nov 24. PMID 15510214. The status, quality, and expansion of the NIH full-length cDNA project: the Mammalian Gene Collection (MGC). Gerhard DS, et al. Genome Res, 2004 Oct. PMID 15489334. Smooth muscle contraction and relaxation. Webb RC. Adv Physiol Educ, 2003 Dec. PMID 14627618. Generation and initial analysis of more than 15,000 full-length human and mouse cDNA sequences. Strausberg RL, et al. Proc Natl Acad Sci U S A, 2002 Dec 24. PMID 12477932.