

MMP26 Antibody (monoclonal) (M01)**Mouse monoclonal antibody raised against a partial recombinant MMP26.****Catalog # AT2881a****Specification**

MMP26 Antibody (monoclonal) (M01) - Product Information

Application	WB, E
Primary Accession	O9NRE1
Other Accession	NM_021801
Reactivity	Human
Host	mouse
Clonality	Monoclonal
Isotype	IgG2a Kappa
Calculated MW	29708

MMP26 Antibody (monoclonal) (M01) - Additional Information**Gene ID** 56547**Other Names**

Matrix metalloproteinase-26, MMP-26, 3424-, Endometase, Matrilysin-2, MMP26

Target/Specificity

MMP26 (NP_068573, 152 a.a. ~ 261 a.a) partial recombinant protein with GST tag. MW of the GST tag alone is 26 KDa.

Dilution

WB~~1:500~1000

E~~N/A

Format

Clear, colorless solution in phosphate buffered saline, pH 7.2 .

Storage

Store at -20°C or lower. Aliquot to avoid repeated freezing and thawing.

Precautions

MMP26 Antibody (monoclonal) (M01) is for research use only and not for use in diagnostic or therapeutic procedures.

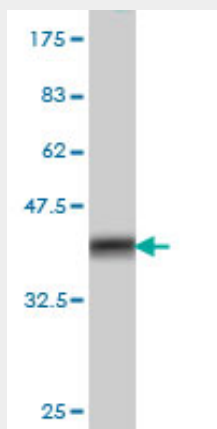
MMP26 Antibody (monoclonal) (M01) - Protocols

Provided below are standard protocols that you may find useful for product applications.

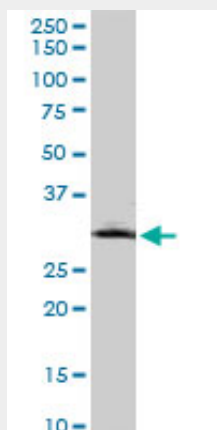
- [Western Blot](#)
- [Blocking Peptides](#)
- [Dot Blot](#)

- [Immunohistochemistry](#)
- [Immunofluorescence](#)
- [Immunoprecipitation](#)
- [Flow Cytometry](#)
- [Cell Culture](#)

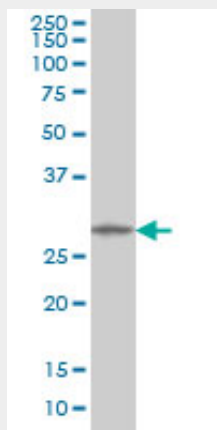
MMP26 Antibody (monoclonal) (M01) - Images



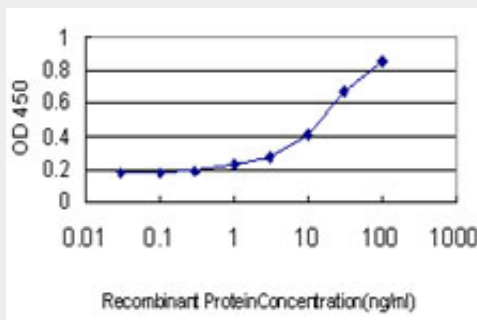
Antibody Reactive Against Recombinant Protein. Western Blot detection against Immunogen (37.84 kDa) .



MMP26 monoclonal antibody (M01), clone 6C6. Western Blot analysis of MMP26 expression in HeLa (Cat # AT2881a)



MMP26 monoclonal antibody (M01), clone 6C6 Western Blot analysis of MMP26 expression in HL-60 (Cat # AT2881a)



Detection limit for recombinant GST tagged MMP26 is approximately 1ng/ml as a capture antibody.

MMP26 Antibody (monoclonal) (M01) - Background

Proteins of the matrix metalloproteinase (MMP) family are involved in the breakdown of extracellular matrix in normal physiological processes, such as embryonic development, reproduction, and tissue remodeling, as well as in disease processes, such as arthritis and metastasis. Most MMP's are secreted as inactive proproteins which are activated when cleaved by extracellular proteinases. The encoded protein degrades type IV collagen, fibronectin, fibrinogen, casein, vitronectin, alpha 1-antitrypsin, alpha 2-macroglobulin, and insulin-like growth factor-binding protein 1, and activates MMP9 by cleavage. The protein differs from most MMP family members in that it lacks a conserved C-terminal protein domain.

MMP26 Antibody (monoclonal) (M01) - References

Evaluation of candidate stromal epithelial cross-talk genes identifies association between risk of serous ovarian cancer and TERT, a cancer susceptibility hot-spot. Johnatty SE, et al. PLoS Genet, 2010 Jul 8. PMID 20628624. Association between polymorphisms of matrix metalloproteinase 11 (MMP-11) and Kawasaki disease in the Korean population. Ban JY, et al. Life Sci, 2010 May 8. PMID 20230842. GnRH I and II up-regulate MMP-26 expression through the JNK pathway in human cytotrophoblasts. Liu J, et al. Reprod Biol Endocrinol, 2010 Jan 15. PMID 20074375. Expression of Matrix Metalloproteinase-26 promotes human glioma U251 cell invasion in vitro and in vivo. Deng Y, et al. Oncol Rep, 2010 Jan. PMID 19956866. Expression of MMP-10, MMP-21, MMP-26, and MMP-28 in Merkel cell carcinoma. Suomela S, et al. Virchows Arch, 2009 Dec. PMID 19921252.