

MS4A1 Antibody (monoclonal) (M01)**Mouse monoclonal antibody raised against a partial recombinant MS4A1.****Catalog # AT2907a****Specification**

MS4A1 Antibody (monoclonal) (M01) - Product Information

Application	WB, E
Primary Accession	P11836
Other Accession	BC002807
Reactivity	Human
Host	mouse
Clonality	Monoclonal
Isotype	IgG1 Kappa
Calculated MW	33077

MS4A1 Antibody (monoclonal) (M01) - Additional Information**Gene ID** 931**Other Names**

B-lymphocyte antigen CD20, B-lymphocyte surface antigen B1, Bp35, Leukocyte surface antigen Leu-16, Membrane-spanning 4-domains subfamily A member 1, CD20, MS4A1, CD20

Target/Specificity

MS4A1 (AAH02807, 210 a.a. ~ 297 a.a) partial recombinant protein with GST tag. MW of the GST tag alone is 26 KDa.

Dilution

WB~~1:500~1000

E~~N/A

Format

Clear, colorless solution in phosphate buffered saline, pH 7.2 .

Storage

Store at -20°C or lower. Aliquot to avoid repeated freezing and thawing.

Precautions

MS4A1 Antibody (monoclonal) (M01) is for research use only and not for use in diagnostic or therapeutic procedures.

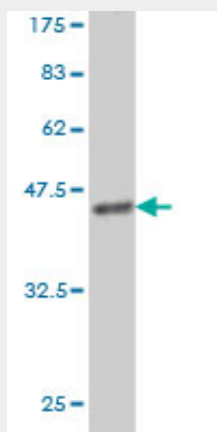
MS4A1 Antibody (monoclonal) (M01) - Protocols

Provided below are standard protocols that you may find useful for product applications.

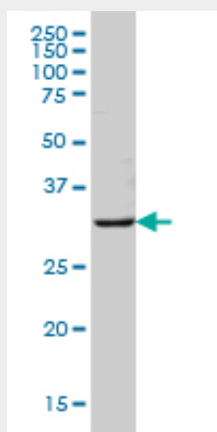
- [Western Blot](#)
- [Blocking Peptides](#)

- [Dot Blot](#)
- [Immunohistochemistry](#)
- [Immunofluorescence](#)
- [Immunoprecipitation](#)
- [Flow Cytometry](#)
- [Cell Culture](#)

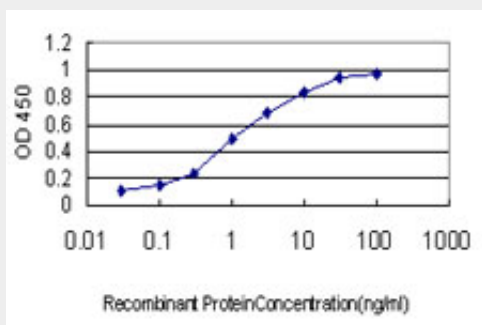
MS4A1 Antibody (monoclonal) (M01) - Images



Antibody Reactive Against Recombinant Protein. Western Blot detection against Immunogen (35.42 KDa) .



MS4A1 monoclonal antibody (M01), clone 5C11 Western Blot analysis of MS4A1 expression in HeLa S3 NE ((Cat # AT2907a)



Detection limit for recombinant GST tagged MS4A1 is approximately 0.1ng/ml as a capture antibody.

MS4A1 Antibody (monoclonal) (M01) - Background

This gene encodes a member of the membrane-spanning 4A gene family. Members of this nascent protein family are characterized by common structural features and similar intron/exon splice boundaries and display unique expression patterns among hematopoietic cells and nonlymphoid tissues. This gene encodes a B-lymphocyte surface molecule which plays a role in the development and differentiation of B-cells into plasma cells. This family member is localized to 11q12, among a cluster of family members. Alternative splicing of this gene results in two transcript variants which encode the same protein.

MS4A1 Antibody (monoclonal) (M01) - References

Double-Hit mature B-cell lymphomas show a common immunophenotype by flow cytometry that includes decreased CD20 expression. Wu D, et al. Am J Clin Pathol, 2010 Aug. PMID 20660329. In vivo cytotoxicity of type I CD20 antibodies critically depends on Fc receptor ITAM signaling. de Haij S, et al. Cancer Res, 2010 Apr 15. PMID 20354182. CD20 as a target for therapeutic type I and II monoclonal antibodies. Beers SA, et al. Semin Hematol, 2010 Apr. PMID 20350657. New genetic associations detected in a host response study to hepatitis B vaccine. Davila S, et al. Genes Immun, 2010 Apr. PMID 20237496. CD20 deficiency in humans results in impaired T cell-independent antibody responses. Kuijpers TW, et al. J Clin Invest, 2010 Jan 4. PMID 20038800.