

MS4A2 Antibody (monoclonal) (M02)**Mouse monoclonal antibody raised against a partial recombinant MS4A2.****Catalog # AT2909a****Specification**

MS4A2 Antibody (monoclonal) (M02) - Product Information

Application	WB, E
Primary Accession	Q01362
Other Accession	NM_000139
Reactivity	Human
Host	mouse
Clonality	Monoclonal
Isotype	IgG2a Kappa
Calculated MW	26534

MS4A2 Antibody (monoclonal) (M02) - Additional Information**Gene ID** 2206**Other Names**

High affinity immunoglobulin epsilon receptor subunit beta, FcERI, Fc epsilon receptor I beta-chain, IgE Fc receptor subunit beta, Membrane-spanning 4-domains subfamily A member 2, MS4A2, APY, FCER1B, IGER

Target/Specificity

MS4A2 (NP_000130, 1 a.a. ~ 59 a.a) partial recombinant protein with GST tag. MW of the GST tag alone is 26 KDa.

Dilution

WB~~1:500~1000

E~~N/A

Format

Clear, colorless solution in phosphate buffered saline, pH 7.2 .

Storage

Store at -20°C or lower. Aliquot to avoid repeated freezing and thawing.

Precautions

MS4A2 Antibody (monoclonal) (M02) is for research use only and not for use in diagnostic or therapeutic procedures.

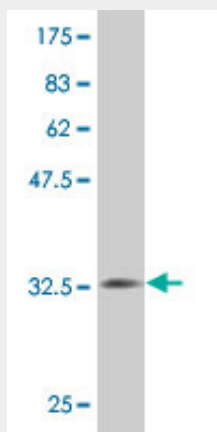
MS4A2 Antibody (monoclonal) (M02) - Protocols

Provided below are standard protocols that you may find useful for product applications.

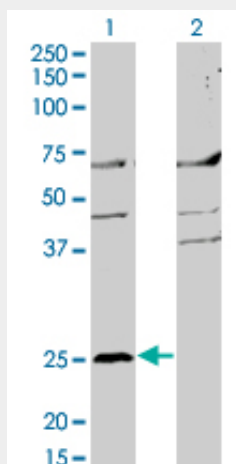
- [Western Blot](#)

- [Blocking Peptides](#)
- [Dot Blot](#)
- [Immunohistochemistry](#)
- [Immunofluorescence](#)
- [Immunoprecipitation](#)
- [Flow Cytometry](#)
- [Cell Culture](#)

MS4A2 Antibody (monoclonal) (M02) - Images



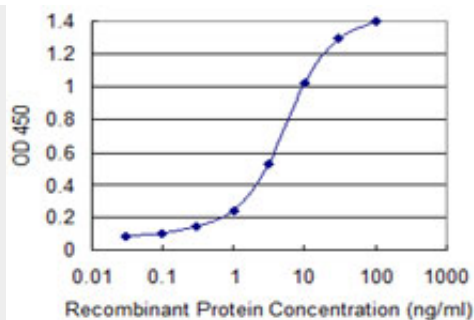
Antibody Reactive Against Recombinant Protein. Western Blot detection against Immunogen (32.23 KDa) .



Western Blot analysis of MS4A2 expression in transfected 293T cell line by MS4A2 monoclonal antibody (M02), clone 3B1.

Lane 1: MS4A2 transfected lysate (26.5 KDa).

Lane 2: Non-transfected lysate.



Detection limit for recombinant GST tagged MS4A2 is 0.1 ng/ml as a capture antibody.

MS4A2 Antibody (monoclonal) (M02) - Background

The allergic response involves the binding of allergen to receptor-bound IgE followed by cell activation and the release of mediators responsible for the manifestations of allergy. The IgE-receptor, a tetramer composed of an alpha, beta, and 2 disulfide-linked gamma chains, is found on the surface of mast cells and basophils. This gene encodes the beta subunit of the high affinity IgE receptor which is a member of the membrane-spanning 4A gene family. Members of this nascent protein family are characterized by common structural features and similar intron/exon splice boundaries and display unique expression patterns among hematopoietic cells and nonlymphoid tissues. This family member is localized to 11q12, among a cluster of family members.

MS4A2 Antibody (monoclonal) (M02) - References

Variation at the NFATC2 Locus Increases the Risk of Thiazolinedione-Induced Edema in the Diabetes REduction Assessment with ramipril and rosiglitazone Medication (DREAM) Study. Bailey SD, et al. Diabetes Care, 2010 Jul 13. PMID 20628086.Independent predictive roles of eotaxin Ala23Thr, paraoxonase 2 Ser311Cys and beta-adrenergic receptor Trp64Arg polymorphisms on cardiac disease in Type 2 Diabetes--an 8-year prospective cohort analysis of 1297 patients. Wang Y, et al. Diabet Med, 2010 Apr. PMID 20536507.Interleukin-9 polymorphism in infants with respiratory syncytial virus infection: an opposite effect in boys and girls. Schuurhof A, et al. Pediatr Pulmonol, 2010 Jun. PMID 20503287.Replication of genetic association studies in asthma and related phenotypes. Undarmaa S, et al. J Hum Genet, 2010 Jun. PMID 20395963.Association Between Serum IgE Levels and the CTLA4 +49A/G and FCER1B -654C/T Polymorphisms in Korean Children With Asthma. Oh KY, et al. Allergy Asthma Immunol Res, 2010 Apr. PMID 20358027.