

## MSLN Antibody (monoclonal) (M02)

Mouse monoclonal antibody raised against a partial recombinant MSLN.

Catalog # AT2917a

### Specification

---

#### MSLN Antibody (monoclonal) (M02) - Product Information

Application	WB, IP, E
Primary Accession	<a href="#">O13421</a>
Other Accession	<a href="#">NM_005823</a>
Reactivity	Human
Host	Mouse
Clonality	Monoclonal
Isotype	IgG2b Kappa
Calculated MW	68986

#### MSLN Antibody (monoclonal) (M02) - Additional Information

Gene ID 10232

#### Other Names

Mesothelin, CAK1 antigen, Pre-pro-megakaryocyte-potentiating factor, Megakaryocyte-potentiating factor, MPF, Mesothelin, cleaved form, MSLN, MPF

#### Target/Specificity

MSLN (NP\_005814, 464 a.a. ~ 563 a.a) partial recombinant protein with GST tag. MW of the GST tag alone is 26 KDa.

#### Dilution

WB~~1:500~1000

IP~~N/A

E~~N/A

#### Format

Clear, colorless solution in phosphate buffered saline, pH 7.2 .

#### Storage

Store at -20°C or lower. Aliquot to avoid repeated freezing and thawing.

#### Precautions

MSLN Antibody (monoclonal) (M02) is for research use only and not for use in diagnostic or therapeutic procedures.

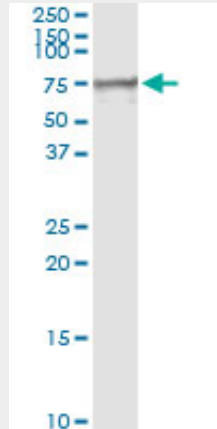
#### MSLN Antibody (monoclonal) (M02) - Protocols

Provided below are standard protocols that you may find useful for product applications.

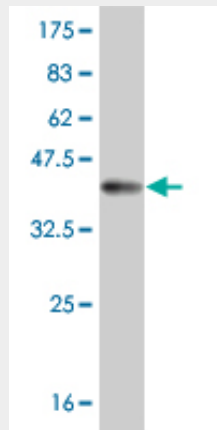
- [Western Blot](#)

- [Blocking Peptides](#)
- [Dot Blot](#)
- [Immunohistochemistry](#)
- [Immunofluorescence](#)
- [Immunoprecipitation](#)
- [Flow Cytometry](#)
- [Cell Culture](#)

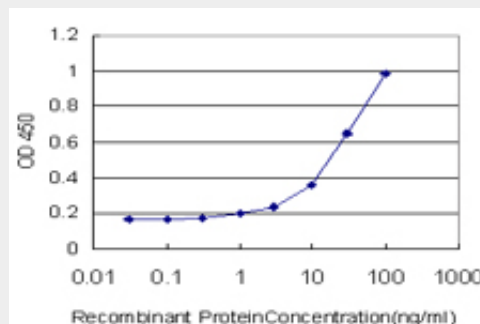
**MSLN Antibody (monoclonal) (M02) - Images**



Immunoprecipitation of MSLN transfected lysate using anti-MSLN monoclonal antibody and Protein A Magnetic Bead ([U0007](#)), and immunoblotted with MSLN MaxPab rabbit polyclonal antibody.



Antibody Reactive Against Recombinant Protein. Western Blot detection against Immunogen (36.74 KDa) .



Detection limit for recombinant GST tagged MSLN is approximately 1ng/ml as a capture antibody.

## **MSLN Antibody (monoclonal) (M02) - Background**

This gene encodes a precursor protein that is cleaved into two products, megakaryocyte potentiating factor and mesothelin. Megakaryocyte potentiation factor functions as a cytokine that can stimulate colony formation in bone marrow megakaryocytes. Mesothelin is a glycosylphosphatidylinositol-anchored cell-surface protein that may function as a cell adhesion protein. This protein is overexpressed in epithelial mesotheliomas, ovarian cancers and in specific squamous cell carcinomas. Alternative splicing results in multiple transcript variants.

## **MSLN Antibody (monoclonal) (M02) - References**

Mesothelin (MSLN) promoter is hypomethylated in malignant mesothelioma, but its expression is not associated with methylation status of the promoter. Tan K, et al. Hum Pathol, 2010 Sep. PMID 20573372. A Large-scale genetic association study of esophageal adenocarcinoma risk. Liu CY, et al. Carcinogenesis, 2010 Jul. PMID 20453000. Mesothelin gene expression and promoter methylation/hypomethylation in gynecological tumors. Obulhasim G, et al. Eur J Gynaecol Oncol, 2010. PMID 20349783. Soluble mesothelin related peptides (SMRP) and osteopontin as protein biomarkers for malignant mesothelioma: analytical validation of ELISA based assays and characterization at mRNA and protein levels. Rai AJ, et al. Clin Chem Lab Med, 2010 Feb. PMID 20131968. Polymorphisms in the putative micro-RNA-binding sites of mesothelin gene are associated with serum levels of mesothelin-related protein. Cristaudo A, et al. Occup Environ Med, 2010 Apr. PMID 19858537.