

**MSMB Antibody (monoclonal) (M08)****Mouse monoclonal antibody raised against a full length recombinant MSMB.****Catalog # AT2918a****Specification**

---

**MSMB Antibody (monoclonal) (M08) - Product Information**

Application	WB, E
Primary Accession	<a href="#">P08118</a>
Other Accession	<a href="#">BC005257</a>
Reactivity	Human
Host	mouse
Clonality	Monoclonal
Isotype	IgG1 Kappa
Calculated MW	12865

**MSMB Antibody (monoclonal) (M08) - Additional Information****Gene ID** 4477**Other Names**

Beta-microseminoprotein, Immunoglobulin-binding factor, IGBF, PN44, Prostate secreted seminal plasma protein, Prostate secretory protein of 94 amino acids, PSP-94, PSP94, Seminal plasma beta-inhibin, MSMB, PRSP

**Target/Specificity**

MSMB (AAH05257.1, 1 a.a. ~ 114 a.a) full-length recombinant protein with GST tag. MW of the GST tag alone is 26 KDa.

**Dilution**

WB~~1:500~1000

E~~N/A

**Format**

Clear, colorless solution in phosphate buffered saline, pH 7.2 .

**Storage**

Store at -20°C or lower. Aliquot to avoid repeated freezing and thawing.

**Precautions**

MSMB Antibody (monoclonal) (M08) is for research use only and not for use in diagnostic or therapeutic procedures.

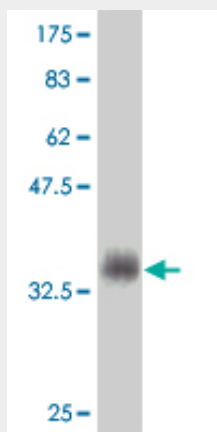
**MSMB Antibody (monoclonal) (M08) - Protocols**

Provided below are standard protocols that you may find useful for product applications.

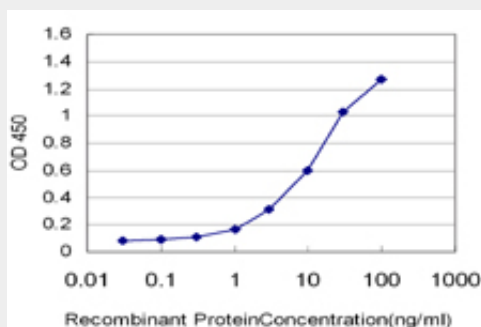
- [Western Blot](#)

- [Blocking Peptides](#)
- [Dot Blot](#)
- [Immunohistochemistry](#)
- [Immunofluorescence](#)
- [Immunoprecipitation](#)
- [Flow Cytometry](#)
- [Cell Culture](#)

### MSMB Antibody (monoclonal) (M08) - Images



Antibody Reactive Against Recombinant Protein. Western Blot detection against Immunogen (38.28 KDa) .



Detection limit for recombinant GST tagged MSMB is approximately 0.1ng/ml as a capture antibody.

### MSMB Antibody (monoclonal) (M08) - Background

The protein encoded by this gene is a member of the immunoglobulin binding factor family. It is synthesized by the epithelial cells of the prostate gland and secreted into the seminal plasma. This protein has inhibin-like activity. It may have a role as an autocrine paracrine factor in uterine, breast and other female reproductive tissues. The expression of the encoded protein is found to be decreased in prostate cancer. Two alternatively spliced transcript variants encoding different isoforms are described for this gene. The use of alternate polyadenylation sites has been found for this gene.

### MSMB Antibody (monoclonal) (M08) - References

1. Expression patterns of candidate susceptibility genes HNF1 $\beta$  and CtBP2 in prostate cancer: Association with tumor progression. Debiais-Delpech C, Godet J, Pedretti N, Bernard FX, Irani J, Cathelineau X, Cussenot O, Fromont GUrol Oncol. 2013 Dec 11. pii: S1078-1439(13)00349-9. doi: 10.1016/j.urolonc.2013.09.006.
2. Novel Prognostic Markers in the Serum of Patients With

Castration-Resistant Prostate Cancer Derived From Quantitative Analysis of the Pten Conditional Knockout Mouse Proteome. Kalin M, Cima I, Schiess R, Fankhauser N, Powles T, Wild P, Templeton A, Cerny T, Aebersold R, Krek W, Gillesen S. Eur Urol. 2011 Jun 29. [Epub ahead of print]