

**MTHFD1L Antibody (monoclonal) (M01)****Mouse monoclonal antibody raised against a partial recombinant MTHFD1L.****Catalog # AT2927a****Specification**

---

**MTHFD1L Antibody (monoclonal) (M01) - Product Information**

Application	WB, E
Primary Accession	<a href="#">Q6UB35</a>
Other Accession	<a href="#">NM_015440</a>
Reactivity	Human, Rat
Host	mouse
Clonality	Monoclonal
Isotype	IgG2a Kappa
Calculated MW	105790

**MTHFD1L Antibody (monoclonal) (M01) - Additional Information****Gene ID** 25902**Other Names**

Monofunctional C1-tetrahydrofolate synthase, mitochondrial, Formyltetrahydrofolate synthetase, MTHFD1L, FTHFSDC1

**Target/Specificity**

MTHFD1L (NP\_056255, 801 a.a. ~ 899 a.a) partial recombinant protein with GST tag. MW of the GST tag alone is 26 KDa.

**Dilution**

WB~~1:500~1000

E~~N/A

**Format**

Clear, colorless solution in phosphate buffered saline, pH 7.2 .

**Storage**

Store at -20°C or lower. Aliquot to avoid repeated freezing and thawing.

**Precautions**

MTHFD1L Antibody (monoclonal) (M01) is for research use only and not for use in diagnostic or therapeutic procedures.

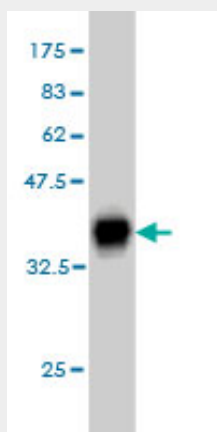
**MTHFD1L Antibody (monoclonal) (M01) - Protocols**

Provided below are standard protocols that you may find useful for product applications.

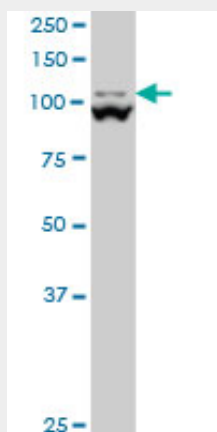
- [Western Blot](#)
- [Blocking Peptides](#)

- [Dot Blot](#)
- [Immunohistochemistry](#)
- [Immunofluorescence](#)
- [Immunoprecipitation](#)
- [Flow Cytometry](#)
- [Cell Culture](#)

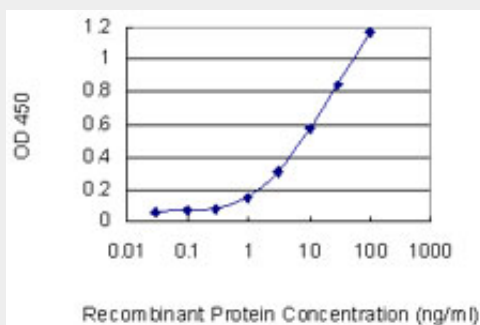
#### MTHFD1L Antibody (monoclonal) (M01) - Images



Antibody Reactive Against Recombinant Protein. Western Blot detection against Immunogen (36.63 kDa) .



MTHFD1L monoclonal antibody (M01), clone 1E8 Western Blot analysis of MTHFD1L expression in PC-12 ( (Cat # AT2927a )



Detection limit for recombinant GST tagged MTHFD1L is 0.3 ng/ml as a capture antibody.

#### MTHFD1L Antibody (monoclonal) (M01) - Background

One-carbon substituted forms of tetrahydrofolate (THF) are involved in the de novo synthesis of purines and thymidylate and support cellular methylation reactions through the regeneration of methionine from homocysteine. MTHFD1L is an enzyme involved in THF synthesis in mitochondria (Christensen et al., 2005 [PubMed 15611115]).

#### **MTHFD1L Antibody (monoclonal) (M01) - References**

Common genetic polymorphisms in Moyamoya and atherosclerotic disease in Europeans. Roder C, et al. Childs Nerv Syst, 2010 Aug 6. PMID 20694560. Variation at the NFATC2 Locus Increases the Risk of Thiazolidinedione-Induced Edema in the Diabetes REduction Assessment with ramipril and rosiglitazone Medication (DREAM) Study. Bailey SD, et al. Diabetes Care, 2010 Jul 13. PMID 20628086. Genetic variants identified in a European genome-wide association study that were found to predict incident coronary heart disease in the atherosclerosis risk in communities study. Bressler J, et al. Am J Epidemiol, 2010 Jan 1. PMID 19955471. Gene-centric association signals for lipids and apolipoproteins identified via the HumanCVD BeadChip. Talmud PJ, et al. Am J Hum Genet, 2009 Nov. PMID 19913121. A common variant in MTHFD1L is associated with neural tube defects and mRNA splicing efficiency. Parle-McDermott A, et al. Hum Mutat, 2009 Dec. PMID 19777576.