

MYBL2 Antibody (monoclonal) (M03)**Mouse monoclonal antibody raised against a partial recombinant MYBL2.****Catalog # AT2943a****Specification**

MYBL2 Antibody (monoclonal) (M03) - Product Information

Application	WB, IF, E
Primary Accession	P10244
Other Accession	BC053555
Reactivity	Human
Host	mouse
Clonality	Monoclonal
Isotype	IgG1 Kappa
Calculated MW	78764

MYBL2 Antibody (monoclonal) (M03) - Additional Information**Gene ID** 4605**Other Names**

Myb-related protein B, B-Myb, Myb-like protein 2, MYBL2, BMYB

Target/Specificity

MYBL2 (AAH53555, 601 a.a. ~ 700 a.a) partial recombinant protein with GST tag. MW of the GST tag alone is 26 KDa.

Dilution

WB~~1:500~1000

IF~~1:50~200

E~~N/A

Format

Clear, colorless solution in phosphate buffered saline, pH 7.2 .

Storage

Store at -20°C or lower. Aliquot to avoid repeated freezing and thawing.

Precautions

MYBL2 Antibody (monoclonal) (M03) is for research use only and not for use in diagnostic or therapeutic procedures.

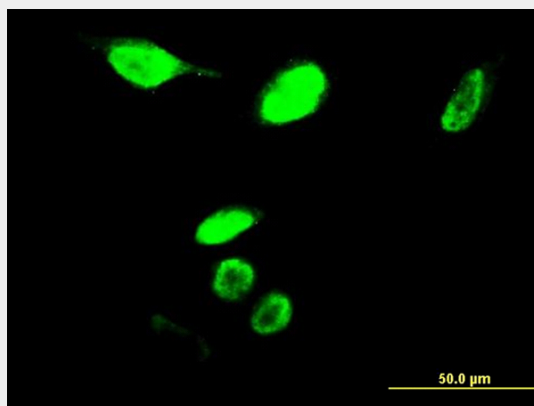
MYBL2 Antibody (monoclonal) (M03) - Protocols

Provided below are standard protocols that you may find useful for product applications.

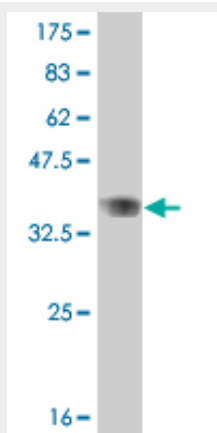
- [Western Blot](#)
- [Blocking Peptides](#)

- [Dot Blot](#)
- [Immunohistochemistry](#)
- [Immunofluorescence](#)
- [Immunoprecipitation](#)
- [Flow Cytometry](#)
- [Cell Culture](#)

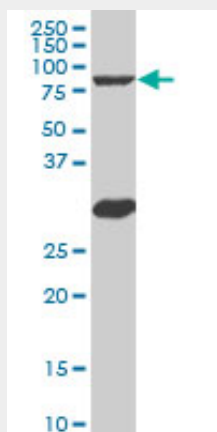
MYBL2 Antibody (monoclonal) (M03) - Images



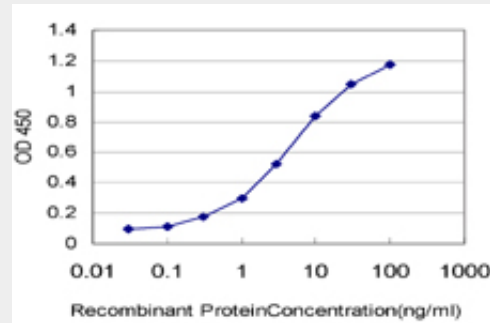
Immunofluorescence of monoclonal antibody to MYBL2 on HeLa cell. [antibody concentration 10 ug/ml]



Antibody Reactive Against Recombinant Protein. Western Blot detection against Immunogen (36.63 KDa) .



MYBL2 monoclonal antibody (M03), clone 5G5 Western Blot analysis of MYBL2 expression in K-562 ((Cat # AT2943a)



Detection limit for recombinant GST tagged MYBL2 is approximately 0.1ng/ml as a capture antibody.

MYBL2 Antibody (monoclonal) (M03) - Background

The protein encoded by this gene, a member of the MYB family of transcription factor genes, is a nuclear protein involved in cell cycle progression. The encoded protein is phosphorylated by cyclin A/cyclin-dependent kinase 2 during the S-phase of the cell cycle and possesses both activator and repressor activities. It has been shown to activate the cell division cycle 2, cyclin D1, and insulin-like growth factor-binding protein 5 genes. Transcript variants may exist for this gene, but their full-length natures have not been determined.

MYBL2 Antibody (monoclonal) (M03) - References

Focal amplifications are associated with high grade and recurrences in stage Ta bladder carcinoma. Nord H, et al. Int J Cancer, 2010 Mar 15. PMID 19821490. Genetic susceptibility to distinct bladder cancer subphenotypes. Guey LT, et al. Eur Urol, 2010 Feb. PMID 19692168. PTEN identified as important risk factor of chronic obstructive pulmonary disease. Hosgood HD 3rd, et al. Respir Med, 2009 Dec. PMID 19625176. B-MYB is required for recovery from the DNA damage-induced G2 checkpoint in p53 mutant cells. Mannefeld M, et al. Cancer Res, 2009 May 1. PMID 19383908. Polymorphisms in innate immunity genes and lung cancer risk in Xuanwei, China. Shen M, et al. Environ Mol Mutagen, 2009 May. PMID 19170196.