

MYL6 Antibody (monoclonal) (M03)**Mouse monoclonal antibody raised against a partial recombinant MYL6.****Catalog # AT2955a****Specification**

MYL6 Antibody (monoclonal) (M03) - Product Information

Application	WB, E
Primary Accession	P60660
Other Accession	NM_021019
Reactivity	Human, Mouse
Host	mouse
Clonality	Monoclonal
Isotype	IgG2a Kappa
Calculated MW	16930

MYL6 Antibody (monoclonal) (M03) - Additional Information**Gene ID** 4637**Other Names**

Myosin light polypeptide 6, 17 kDa myosin light chain, LC17, Myosin light chain 3, MLC-3, Myosin light chain alkali 3, Myosin light chain A3, Smooth muscle and nonmuscle myosin light chain alkali 6, MYL6

Target/Specificity

MYL6 (NP_066299, 1 a.a. ~ 100 a.a) partial recombinant protein with GST tag. MW of the GST tag alone is 26 KDa.

Dilution

WB~~1:500~1000

Format

Clear, colorless solution in phosphate buffered saline, pH 7.2 .

Storage

Store at -20°C or lower. Aliquot to avoid repeated freezing and thawing.

Precautions

MYL6 Antibody (monoclonal) (M03) is for research use only and not for use in diagnostic or therapeutic procedures.

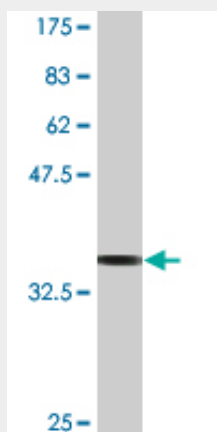
MYL6 Antibody (monoclonal) (M03) - Protocols

Provided below are standard protocols that you may find useful for product applications.

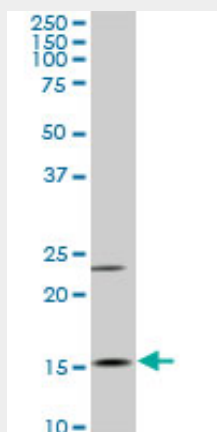
- [Western Blot](#)
- [Blocking Peptides](#)

- [Dot Blot](#)
- [Immunohistochemistry](#)
- [Immunofluorescence](#)
- [Immunoprecipitation](#)
- [Flow Cytometry](#)
- [Cell Culture](#)

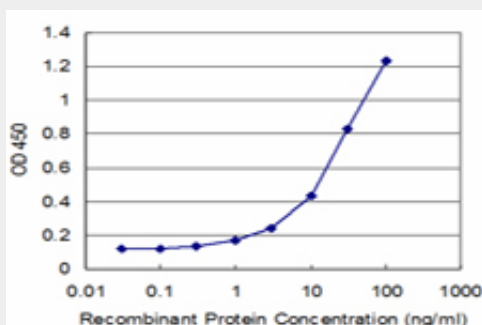
MYL6 Antibody (monoclonal) (M03) - Images



Antibody Reactive Against Recombinant Protein. Western Blot detection against Immunogen (36.74 kDa) .



MYL6 monoclonal antibody (M03), clone 1D6. Western Blot analysis of MYL6 expression in Raw 264.7 ((Cat # AT2955a)



Detection limit for recombinant GST tagged MYL6 is approximately 1ng/ml as a capture antibody.

MYL6 Antibody (monoclonal) (M03) - Background

Myosin is a hexameric ATPase cellular motor protein. It is composed of two heavy chains, two nonphosphorylatable alkali light chains, and two phosphorylatable regulatory light chains. This gene encodes a myosin alkali light chain that is expressed in smooth muscle and non-muscle tissues. Genomic sequences representing several pseudogenes have been described and two transcript variants encoding different isoforms have been identified for this gene.

MYL6 Antibody (monoclonal) (M03) - References

Defining the human deubiquitinating enzyme interaction landscape. Sowa ME, et al. Cell, 2009 Jul 23. PMID 19615732. Preparation of monoclonal antibodies against human ventricular myosin light chain 1 (HVMLC1) for functional studies. Fu ZY, et al. Acta Biochim Biophys Sin (Shanghai), 2006 Sep. PMID 16953301. Towards a proteome-scale map of the human protein-protein interaction network. Rual JF, et al. Nature, 2005 Oct 20. PMID 16189514. A human protein-protein interaction network: a resource for annotating the proteome. Stelzl U, et al. Cell, 2005 Sep 23. PMID 16169070. The status, quality, and expansion of the NIH full-length cDNA project: the Mammalian Gene Collection (MGC). Gerhard DS, et al. Genome Res, 2004 Oct. PMID 15489334.