

NCK1 Antibody (monoclonal) (M01)**Mouse monoclonal antibody raised against a partial recombinant NCK1.****Catalog # AT2980a****Specification**

NCK1 Antibody (monoclonal) (M01) - Product Information

Application	WB, E
Primary Accession	P16333
Other Accession	BC006403
Reactivity	Human
Host	mouse
Clonality	Monoclonal
Isotype	IgG1 Kappa
Calculated MW	42864

NCK1 Antibody (monoclonal) (M01) - Additional Information**Gene ID** 4690**Other Names**

Cytoplasmic protein NCK1, NCK adaptor protein 1, Nck-1, SH2/SH3 adaptor protein NCK-alpha, NCK1, NCK

Target/Specificity

NCK1 (AAH06403, 185 a.a. ~ 294 a.a) partial recombinant protein with GST tag. MW of the GST tag alone is 26 KDa.

Dilution

WB~~1:500~1000

E~~N/A

Format

Clear, colorless solution in phosphate buffered saline, pH 7.2 .

Storage

Store at -20°C or lower. Aliquot to avoid repeated freezing and thawing.

Precautions

NCK1 Antibody (monoclonal) (M01) is for research use only and not for use in diagnostic or therapeutic procedures.

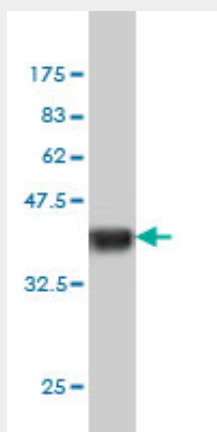
NCK1 Antibody (monoclonal) (M01) - Protocols

Provided below are standard protocols that you may find useful for product applications.

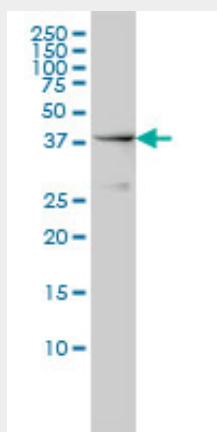
- [Western Blot](#)
- [Blocking Peptides](#)

- [Dot Blot](#)
- [Immunohistochemistry](#)
- [Immunofluorescence](#)
- [Immunoprecipitation](#)
- [Flow Cytometry](#)
- [Cell Culture](#)

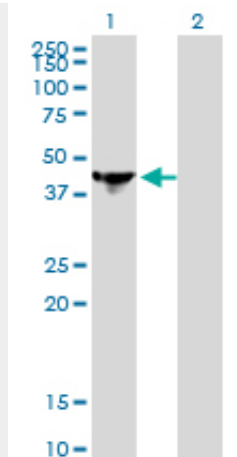
NCK1 Antibody (monoclonal) (M01) - Images



Antibody Reactive Against Recombinant Protein. Western Blot detection against Immunogen (37.73 kDa) .



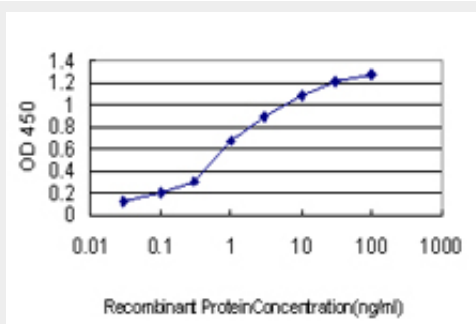
NCK1 monoclonal antibody (M01), clone 1A1 Western Blot analysis of NCK1 expression in HeLa S3 NE ((Cat # AT2980a)



Western Blot analysis of NCK1 expression in transfected 293T cell line by NCK1 monoclonal antibody (M01), clone 1A1.

Lane 1: NCK1 transfected lysate(42.9 KDa).

Lane 2: Non-transfected lysate.



Detection limit for recombinant GST tagged NCK1 is approximately 0.1ng/ml as a capture antibody.

NCK1 Antibody (monoclonal) (M01) - Background

The protein encoded by this gene is one of the signaling and transforming proteins containing Src homology 2 and 3 (SH2 and SH3) domains. It is located in the cytoplasm and is an adaptor protein involved in transducing signals from receptor tyrosine kinases to downstream signal recipients such as RAS. Alternatively spliced transcript variants encoding different isoforms have been found.

NCK1 Antibody (monoclonal) (M01) - References

Cooperative interactions at the SLP-76 complex are critical for actin polymerization. Barda-Saad M, et al. EMBO J, 2010 Jul 21. PMID 20562827. New genetic associations detected in a host response study to hepatitis B vaccine. Davila S, et al. Genes Immun, 2010 Apr. PMID 20237496. Ponsin interacts with Nck adapter proteins: implications for a role in cytoskeletal remodelling during differentiation of skeletal muscle cells. Gehmlich K, et al. Eur J Cell Biol, 2010 May. PMID 20129698. The Bcr-Abl kinase regulates the actin cytoskeleton via a GADS/Slp-76/Nck1 adaptor protein pathway. Preisinger C, et al. Cell Signal, 2010 May. PMID 20079431. Identification of SH3 domain interaction partners of human FasL (CD178) by phage display screening. Voss M, et al. BMC Immunol, 2009 Oct 6. PMID 19807924.