

NDE1 Antibody (monoclonal) (M01)**Mouse monoclonal antibody raised against a full length recombinant NDE1.****Catalog # AT2987a****Specification**

NDE1 Antibody (monoclonal) (M01) - Product Information

Application	WB, IF, E
Primary Accession	O9NXR1
Other Accession	BC001421
Reactivity	Human
Host	mouse
Clonality	Monoclonal
Isotype	IgG1 Kappa
Calculated MW	37721

NDE1 Antibody (monoclonal) (M01) - Additional Information**Gene ID** 54820**Other Names**

Nuclear distribution protein nudE homolog 1, NudE, NDE1, NUDE

Target/Specificity

NDE1 (AAH01421, 1 a.a. ~ 335 a.a) full-length recombinant protein with GST tag. MW of the GST tag alone is 26 KDa.

Dilution

WB~~1:500~1000

IF~~1:50~200

E~~N/A

Format

Clear, colorless solution in phosphate buffered saline, pH 7.2 .

Storage

Store at -20°C or lower. Aliquot to avoid repeated freezing and thawing.

Precautions

NDE1 Antibody (monoclonal) (M01) is for research use only and not for use in diagnostic or therapeutic procedures.

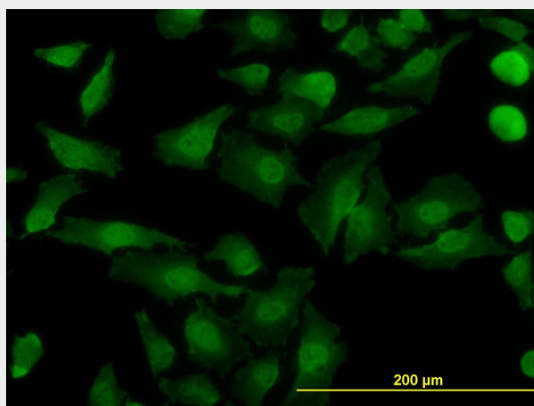
NDE1 Antibody (monoclonal) (M01) - Protocols

Provided below are standard protocols that you may find useful for product applications.

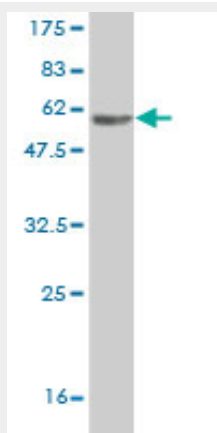
- [Western Blot](#)
- [Blocking Peptides](#)

- [Dot Blot](#)
- [Immunohistochemistry](#)
- [Immunofluorescence](#)
- [Immunoprecipitation](#)
- [Flow Cytometry](#)
- [Cell Culture](#)

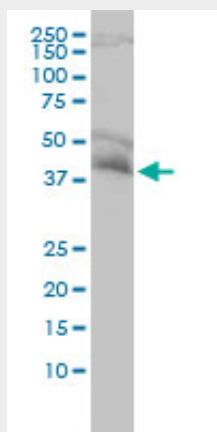
NDE1 Antibody (monoclonal) (M01) - Images



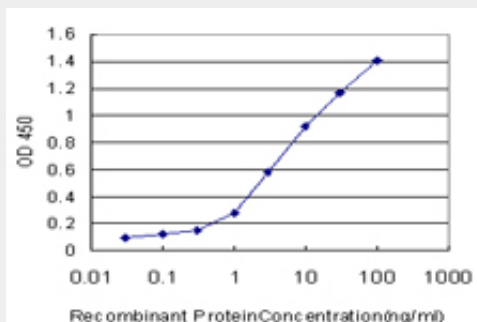
Immunofluorescence of monoclonal antibody to NDE1 on HeLa cell. [antibody concentration 10 ug/ml]



Antibody Reactive Against Recombinant Protein. Western Blot detection against Immunogen (62.59 KDa) .



NDE1 monoclonal antibody (M01), clone 2G11-1C11 Western Blot analysis of NDE1 expression in Hela ((Cat # AT2987a)



Detection limit for recombinant GST tagged NDE1 is approximately 0.03ng/ml as a capture antibody.

NDE1 Antibody (monoclonal) (M01) - Background

This gene encodes a member of the nuclear distribution E (NudE) family of proteins. The encoded protein is localized at the centrosome and interacts with other centrosome components as part of a multiprotein complex that regulates dynein function. This protein plays an essential role in microtubule organization, mitosis and neuronal migration. Alternative splicing results in multiple transcript variants.

NDE1 Antibody (monoclonal) (M01) - References

1.NDE1, NDEL1: Multimerisation, alternate splicing and DISC1 interaction.Bradshaw NJ, Christie S, Soares DC, Carlyle BC, Porteous DJ, Millar JK.Neurosci Lett. 2009 Jan 16;449(3):228-33. Epub 2008 Nov 6.