

**NME1 Antibody (monoclonal) (M01)****Mouse monoclonal antibody raised against a full length recombinant NME1.****Catalog # AT3064a****Specification**

---

**NME1 Antibody (monoclonal) (M01) - Product Information**

Application	WB, IF, E
Primary Accession	<a href="#">P15531</a>
Other Accession	<a href="#">BC000293</a>
Reactivity	Human
Host	mouse
Clonality	Monoclonal
Isotype	IgG1 kappa
Calculated MW	17149

**NME1 Antibody (monoclonal) (M01) - Additional Information****Gene ID** 4830**Other Names**

Nucleoside diphosphate kinase A, NDK A, NDP kinase A, Granzyme A-activated DNase, GAAD, Metastasis inhibition factor nm23, NM23-H1, Tumor metastatic process-associated protein, NME1, NDPKA, NM23

**Target/Specificity**

NME1 (AAH00293, 1 a.a. ~ 152 a.a) full-length recombinant protein with GST tag. MW of the GST tag alone is 26 KDa.

**Dilution**

WB~~1:500~1000

IF~~1:50~200

E~~N/A

**Format**

Clear, colorless solution in phosphate buffered saline, pH 7.2 .

**Storage**

Store at -20°C or lower. Aliquot to avoid repeated freezing and thawing.

**Precautions**

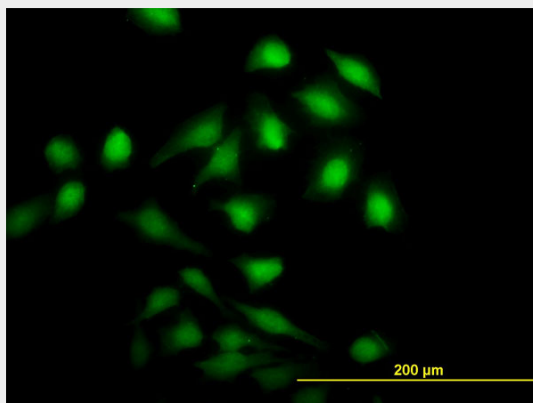
NME1 Antibody (monoclonal) (M01) is for research use only and not for use in diagnostic or therapeutic procedures.

**NME1 Antibody (monoclonal) (M01) - Protocols**

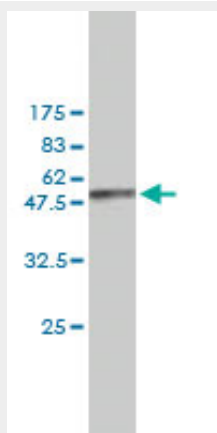
Provided below are standard protocols that you may find useful for product applications.

- [Western Blot](#)
- [Blocking Peptides](#)
- [Dot Blot](#)
- [Immunohistochemistry](#)
- [Immunofluorescence](#)
- [Immunoprecipitation](#)
- [Flow Cytometry](#)
- [Cell Culture](#)

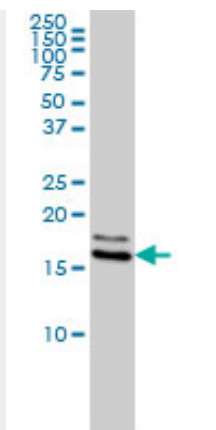
#### **NME1 Antibody (monoclonal) (M01) - Images**



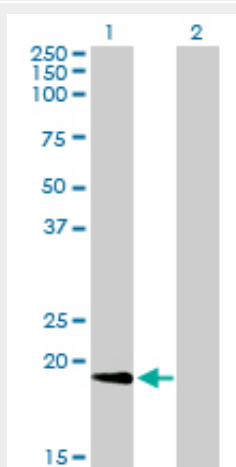
Immunofluorescence of monoclonal antibody to NME1 on HeLa cell. [antibody concentration 20 ug/ml]



Antibody Reactive Against Recombinant Protein. Western Blot detection against Immunogen (42.46 KDa) .



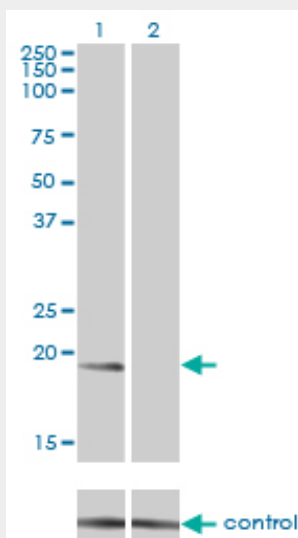
NME1 monoclonal antibody (M01), clone 2H1 Western Blot analysis of NME1 expression in HeLa S3 NE (Cat # AT3064a)



Western Blot analysis of NME1 expression in transfected 293T cell line by NME1 monoclonal antibody (M01), clone 2H1.

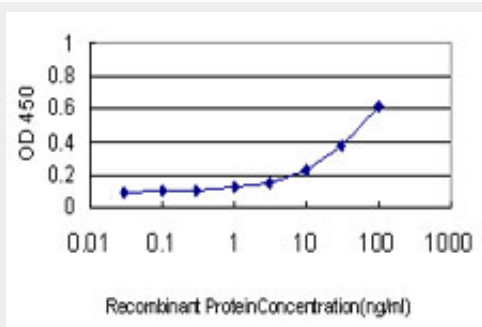
Lane 1: NME1 transfected lysate(19.7 KDa).

Lane 2: Non-transfected lysate.



Western blot analysis of NME1 over-expressed 293 cell line, cotransfected with NME1 Validated

#### Chimera RNAi ( (Cat # AT3064a )



Detection limit for recombinant GST tagged NME1 is approximately 1ng/ml as a capture antibody.

#### **NME1 Antibody (monoclonal) (M01) - Background**

This gene (NME1) was identified because of its reduced mRNA transcript levels in highly metastatic cells. Nucleoside diphosphate kinase (NDK) exists as a hexamer composed of 'A' (encoded by this gene) and 'B' (encoded by NME2) isoforms. Mutations in this gene have been identified in aggressive neuroblastomas. Two transcript variants encoding different isoforms have been found for this gene. Co-transcription of this gene and the neighboring downstream gene (NME2) generates naturally-occurring transcripts (NME1-NME2), which encodes a fusion protein comprised of sequence sharing identity with each individual gene product.

#### **NME1 Antibody (monoclonal) (M01) - References**

Significant association of genetic polymorphism of human nonmetastatic clone 23 type 1 gene with an increased risk of endometrial cancer. Wang PH, et al. Gynecol Oncol, 2010 Oct. PMID 20599259. Characterization of a novel mechanism of genomic instability involving the SEI1/SET/NM23H1 pathway in esophageal cancers. Li Y, et al. Cancer Res, 2010 Jul 15. PMID 20570897. Centrosome-related genes, genetic variation, and risk of breast cancer. Olson JE, et al. Breast Cancer Res Treat, 2010 May 28. PMID 20508983. The Nm23-H1 metastasis suppressor as a translational target. Marshall JC, et al. Eur J Cancer, 2010 May. PMID 20304626. NME1 at the human maternal-fetal interface downregulates titin expression and invasiveness of trophoblast cells via MAPK pathway in early pregnancy. Xie KM, et al. Reproduction, 2010 Apr. PMID 20145075.