

NME1 Antibody (monoclonal) (M02)**Mouse monoclonal antibody raised against a partial recombinant NME1.****Catalog # AT3065a****Specification**

NME1 Antibody (monoclonal) (M02) - Product Information

Application	WB, IHC, IF, IP, E
Primary Accession	P15531
Other Accession	NM_000269
Reactivity	Human
Host	mouse
Clonality	Monoclonal
Isotype	IgG1 Kappa
Calculated MW	17149

NME1 Antibody (monoclonal) (M02) - Additional Information**Gene ID** 4830**Other Names**

Nucleoside diphosphate kinase A, NDK A, NDP kinase A, Granzyme A-activated DNase, GAAD, Metastasis inhibition factor nm23, NM23-H1, Tumor metastatic process-associated protein, NME1, NDPKA, NM23

Target/Specificity

NME1 (NP_000260, 43 a.a. ~ 152 a.a) partial recombinant protein with GST tag. MW of the GST tag alone is 26 KDa.

Dilution

WB~~1:500~1000

IHC~~1:100~500

IF~~1:50~200

IP~~N/A

E~~N/A

Format

Clear, colorless solution in phosphate buffered saline, pH 7.2 .

Storage

Store at -20°C or lower. Aliquot to avoid repeated freezing and thawing.

Precautions

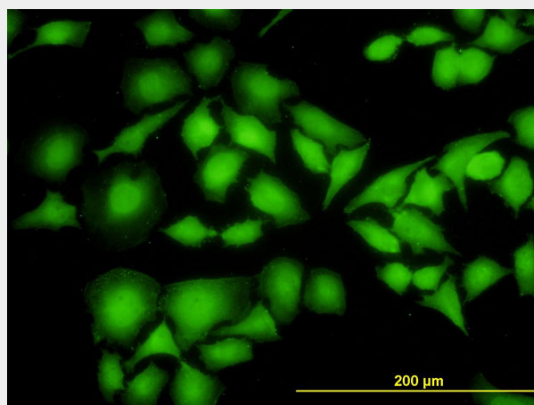
NME1 Antibody (monoclonal) (M02) is for research use only and not for use in diagnostic or therapeutic procedures.

NME1 Antibody (monoclonal) (M02) - Protocols

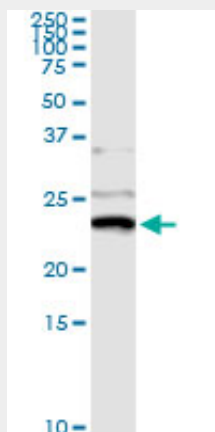
Provided below are standard protocols that you may find useful for product applications.

- [Western Blot](#)
- [Blocking Peptides](#)
- [Dot Blot](#)
- [Immunohistochemistry](#)
- [Immunofluorescence](#)
- [Immunoprecipitation](#)
- [Flow Cytometry](#)
- [Cell Culture](#)

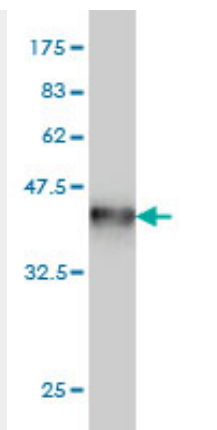
NME1 Antibody (monoclonal) (M02) - Images



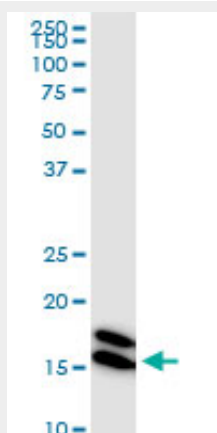
Immunofluorescence of monoclonal antibody to NME1 on HeLa cell. [antibody concentration 10 ug/ml]



Immunoprecipitation of NME1 transfected lysate using anti-NME1 monoclonal antibody and Protein A Magnetic Bead ([U0007](#)), and immunoblotted with NME1 MaxPab rabbit polyclonal antibody.



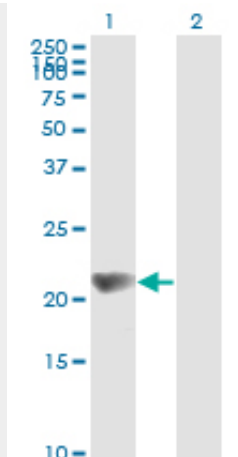
Antibody Reactive Against Recombinant Protein. Western Blot detection against Immunogen (37.84 KDa) .



NME1 monoclonal antibody (M02), clone 1D7. Western Blot analysis of NME1 expression in HeLa((Cat # AT3065a)



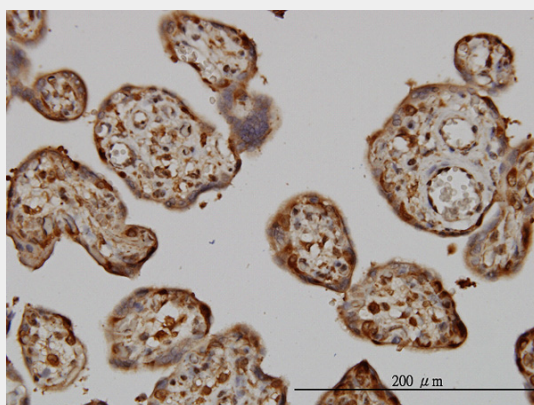
NME1 monoclonal antibody (M02), clone 1D7. Western Blot analysis of NME1 expression in different cell lines.



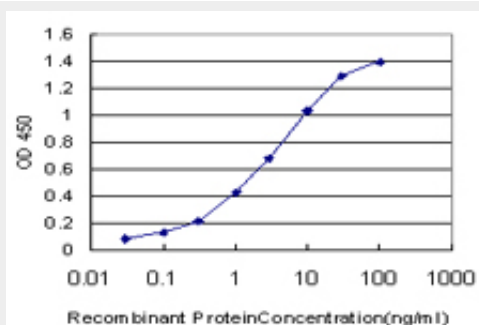
Western Blot analysis of NME1 expression in transfected 293T cell line by NME1 monoclonal antibody (M02), clone 1D7.

Lane 1: NME1 transfected lysate(19.7 KDa).

Lane 2: Non-transfected lysate.



Immunoperoxidase of monoclonal antibody to NME1 on formalin-fixed paraffin-embedded human placenta. [antibody concentration 3 ug/ml]



Detection limit for recombinant GST tagged NME1 is approximately 0.1ng/ml as a capture antibody.

NME1 Antibody (monoclonal) (M02) - Background

This gene (NME1) was identified because of its reduced mRNA transcript levels in highly metastatic cells. Nucleoside diphosphate kinase (NDK) exists as a hexamer composed of 'A' (encoded by this gene) and 'B' (encoded by NME2) isoforms. Mutations in this gene have been identified in aggressive neuroblastomas. Two transcript variants encoding different isoforms have been found

for this gene. Co-transcription of this gene and the neighboring downstream gene (NME2) generates naturally-occurring transcripts (NME1-NME2), which encodes a fusion protein comprised of sequence sharing identity with each individual gene product.

NME1 Antibody (monoclonal) (M02) - References

1. Identification of Antigenic Proteins Associated with Trichloroethylene-Induced Autoimmune Disease by Serological Proteome Analysis. Liu J, Xing X, Huang H, Jiang Y, He H, Xu X, Yuan J, Zhou L, Yang L, Zhuang Z. Toxicol Appl Pharmacol. 2009 Nov 1;240(3):393-400. Epub 2009 Aug 6.