

NODAL Antibody (monoclonal) (M03)**Mouse monoclonal antibody raised against a partial recombinant NODAL.****Catalog # AT3074a****Specification**

NODAL Antibody (monoclonal) (M03) - Product Information

Application	WB, IHC, IF
Primary Accession	O96S42
Other Accession	NM_018055
Reactivity	Human, Mouse, Rat
Host	mouse
Clonality	Monoclonal
Isotype	IgG1 Kappa
Calculated MW	39561

NODAL Antibody (monoclonal) (M03) - Additional Information**Gene ID** 4838**Other Names**

Nodal homolog, NODAL

Target/Specificity

NODAL (NP_060525, 275 a.a. ~ 346 a.a) partial recombinant protein with GST tag. MW of the GST tag alone is 26 KDa.

Dilution

WB~~1:500~1000

IHC~~1:100~500

IF~~1:50~200

Format

Clear, colorless solution in phosphate buffered saline, pH 7.2 .

Storage

Store at -20°C or lower. Aliquot to avoid repeated freezing and thawing.

Precautions

NODAL Antibody (monoclonal) (M03) is for research use only and not for use in diagnostic or therapeutic procedures.

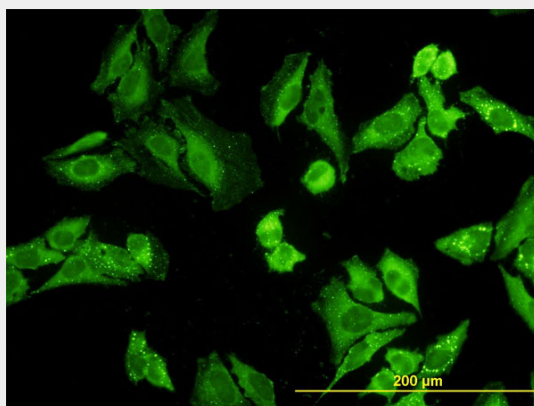
NODAL Antibody (monoclonal) (M03) - Protocols

Provided below are standard protocols that you may find useful for product applications.

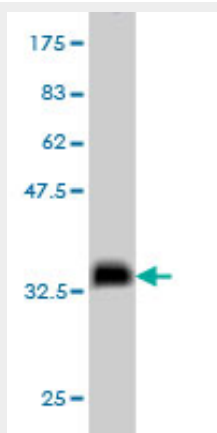
- [Western Blot](#)
- [Blocking Peptides](#)

- [Dot Blot](#)
- [Immunohistochemistry](#)
- [Immunofluorescence](#)
- [Immunoprecipitation](#)
- [Flow Cytometry](#)
- [Cell Culture](#)

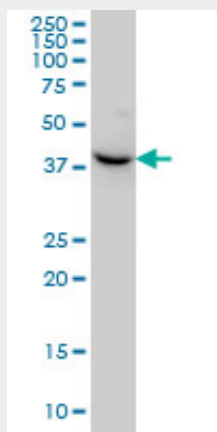
NODAL Antibody (monoclonal) (M03) - Images



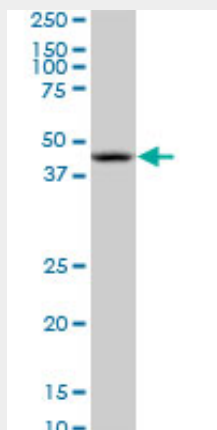
Immunofluorescence of monoclonal antibody to NODAL on HeLa cell. [antibody concentration 10 ug/ml]



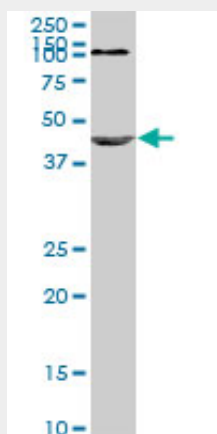
Antibody Reactive Against Recombinant Protein. Western Blot detection against Immunogen (33.66 KDa) .



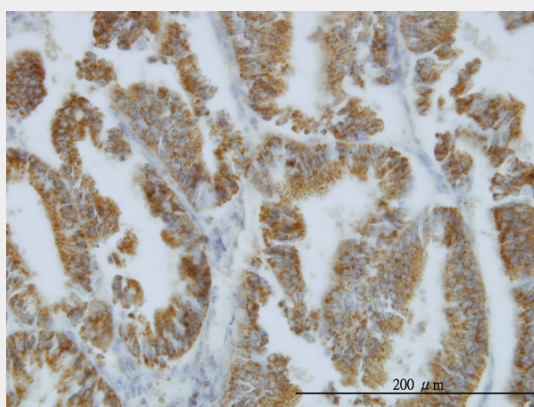
NODAL monoclonal antibody (M03), clone 5C3 Western Blot analysis of NODAL expression in HeLa ((Cat # AT3074a)



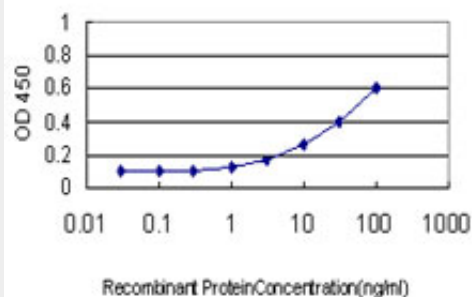
NODAL monoclonal antibody (M03), clone 5C3. Western Blot analysis of NODAL expression in PC-12 ((Cat # AT3074a)



NODAL monoclonal antibody (M03), clone 5C3. Western Blot analysis of NODAL expression in Raw 264.7 ((Cat # AT3074a)



Immunoperoxidase of monoclonal antibody to NODAL on formalin-fixed paraffin-embedded human endometrium cancer. [antibody concentration 3 ug/ml]



Detection limit for recombinant GST tagged NODAL is approximately 0.3ng/ml as a capture antibody.

NODAL Antibody (monoclonal) (M03) - Background

The protein encoded by this gene is a member of the TGF-beta superfamily. Studies of the mouse counterpart suggested that this gene may be essential for mesoderm formation and subsequent organization of axial structures in early embryonic development.

NODAL Antibody (monoclonal) (M03) - References

1.Reactivation of embryonic nodal signaling is associated with tumor progression and promotes the growth of prostate cancer cells.Lawrence MG, Margaryan NV, Loessner D, Collins A, Kerr KM, Turner M, Seftor EA, Stephens CR, Lai J, Postovit LM, Clements JA, Hendrix MJ; APC BioResource.Prostate. 2011 Jan 12. [Epub ahead of print]