

**NODAL Antibody (monoclonal) (M05)****Mouse monoclonal antibody raised against a partial recombinant NODAL.****Catalog # AT3075a****Specification**

---

**NODAL Antibody (monoclonal) (M05) - Product Information**

Application	WB, E
Primary Accession	<a href="#">Q96S42</a>
Other Accession	<a href="#">NM_018055</a>
Reactivity	Human, Rat
Host	mouse
Clonality	Monoclonal
Isotype	IgG2a Kappa
Calculated MW	39561

**NODAL Antibody (monoclonal) (M05) - Additional Information****Gene ID** 4838**Other Names**

Nodal homolog, NODAL

**Target/Specificity**

NODAL (NP\_060525, 275 a.a. ~ 346 a.a) partial recombinant protein with GST tag. MW of the GST tag alone is 26 KDa.

**Dilution**

WB~~1:500~1000

E~~N/A

**Format**

Clear, colorless solution in phosphate buffered saline, pH 7.2 .

**Storage**

Store at -20°C or lower. Aliquot to avoid repeated freezing and thawing.

**Precautions**

NODAL Antibody (monoclonal) (M05) is for research use only and not for use in diagnostic or therapeutic procedures.

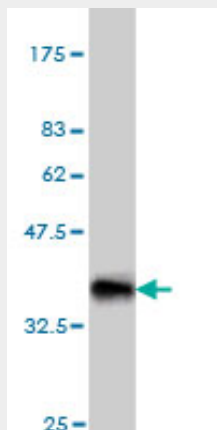
**NODAL Antibody (monoclonal) (M05) - Protocols**

Provided below are standard protocols that you may find useful for product applications.

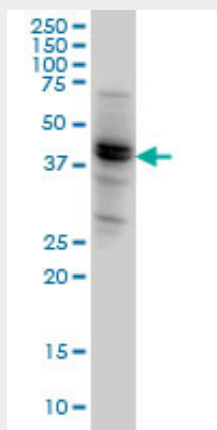
- [Western Blot](#)
- [Blocking Peptides](#)
- [Dot Blot](#)

- [Immunohistochemistry](#)
- [Immunofluorescence](#)
- [Immunoprecipitation](#)
- [Flow Cytometry](#)
- [Cell Culture](#)

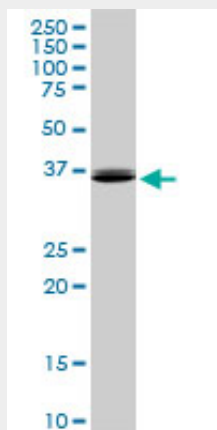
### **NODAL Antibody (monoclonal) (M05) - Images**



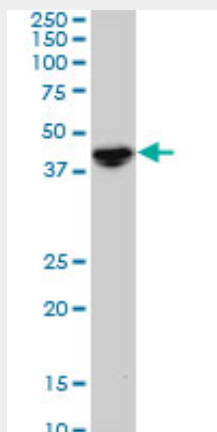
Antibody Reactive Against Recombinant Protein. Western Blot detection against Immunogen (33.66 kDa) .



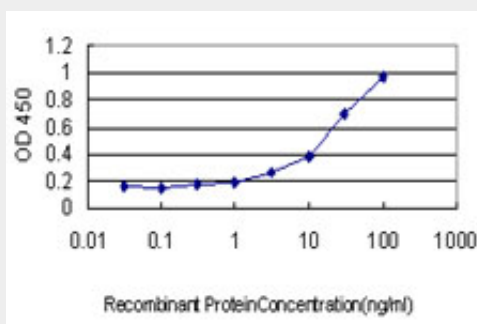
NODAL monoclonal antibody (M05), clone 5A3 Western Blot analysis of NODAL expression in HeLa (Cat # AT3075a)



NODAL monoclonal antibody (M05), clone 5A3. Western Blot analysis of NODAL expression in PC-12 (Cat # AT3075a)



NODAL monoclonal antibody (M05), clone 5A3. Western Blot analysis of NODAL expression in HepG2 (Cat # AT3075a)



Detection limit for recombinant GST tagged NODAL is approximately 1ng/ml as a capture antibody.

### **NODAL Antibody (monoclonal) (M05) - Background**

The protein encoded by this gene is a member of the TGF-beta superfamily. Studies of the mouse counterpart suggested that this gene may be essential for mesoderm formation and subsequent organization of axial structures in early embryonic development.

### **NODAL Antibody (monoclonal) (M05) - References**

Variation at the NFATC2 Locus Increases the Risk of Thiazolidinedione-Induced Edema in the Diabetes REduction Assessment with ramipril and rosiglitazone Medication (DREAM) Study. Bailey SD, et al. Diabetes Care, 2010 Jul 13. PMID 20628086. The embryonic morphogen, Nodal, is associated with channel-like structures in human malignant melanoma xenografts. McAllister JC, et al. J Cutan Pathol, 2010 Apr. PMID 20482672. Nodal promotes growth and invasion in human gliomas. Lee CC, et al. Oncogene, 2010 May 27. PMID 20383200. Gene-centric association signals for lipids and apolipoproteins identified via the HumanCVD BeadChip. Talmud PJ, et al. Am J Hum Genet, 2009 Nov. PMID 19913121. Expression of nodal signalling components in cycling human endometrium and in endometrial cancer. Papageorgiou I, et al. Reprod Biol Endocrinol, 2009 Oct 29. PMID 19874624.