

NR1D2 Antibody (monoclonal) (M01)**Mouse monoclonal antibody raised against a full length recombinant NR1D2.****Catalog # AT3095a****Specification**

NR1D2 Antibody (monoclonal) (M01) - Product Information

Application	WB, IF
Primary Accession	Q14995
Other Accession	BC045613
Reactivity	Human
Host	mouse
Clonality	Monoclonal
Isotype	IgG1 kappa
Calculated MW	64643

NR1D2 Antibody (monoclonal) (M01) - Additional Information**Gene ID** 9975**Other Names**

Nuclear receptor subfamily 1 group D member 2, Orphan nuclear hormone receptor BD73, Rev-erb alpha-related receptor, RVR, Rev-erb-beta, V-erbA-related protein 1-related, EAR-1R, NR1D2

Target/Specificity

NR1D2 (AAH45613, 1 a.a. ~ 579 a.a) full-length recombinant protein with GST tag. MW of the GST tag alone is 26 KDa.

Dilution

WB~~1:500~1000

IF~~1:50~200

Format

Clear, colorless solution in phosphate buffered saline, pH 7.2 .

Storage

Store at -20°C or lower. Aliquot to avoid repeated freezing and thawing.

Precautions

NR1D2 Antibody (monoclonal) (M01) is for research use only and not for use in diagnostic or therapeutic procedures.

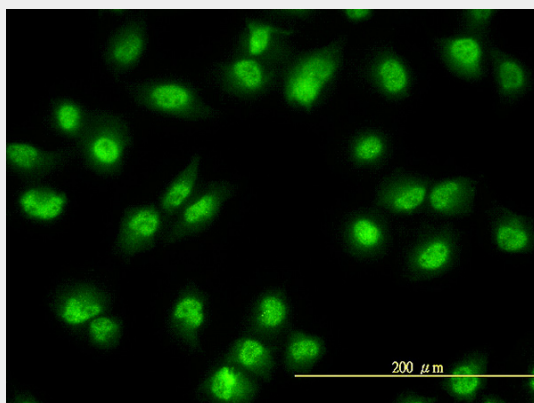
NR1D2 Antibody (monoclonal) (M01) - Protocols

Provided below are standard protocols that you may find useful for product applications.

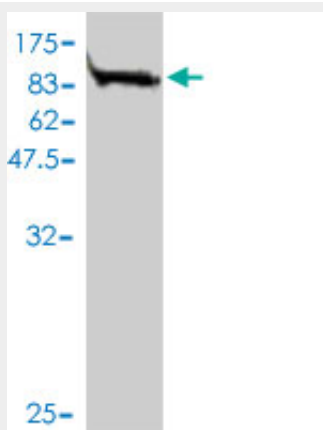
- [Western Blot](#)
- [Blocking Peptides](#)

- [Dot Blot](#)
- [Immunohistochemistry](#)
- [Immunofluorescence](#)
- [Immunoprecipitation](#)
- [Flow Cytometry](#)
- [Cell Culture](#)

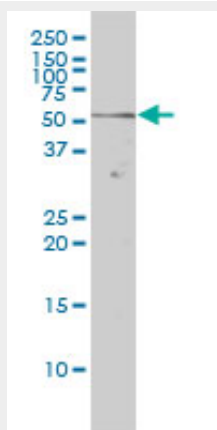
NR1D2 Antibody (monoclonal) (M01) - Images



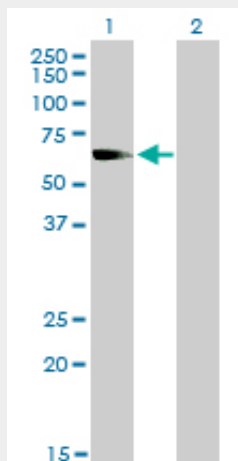
Immunofluorescence of monoclonal antibody to NR1D2 on HeLa cell. [antibody concentration 10 ug/ml]



Antibody Reactive Against Recombinant Protein. Western Blot detection against Immunogen (89.21 KDa) .



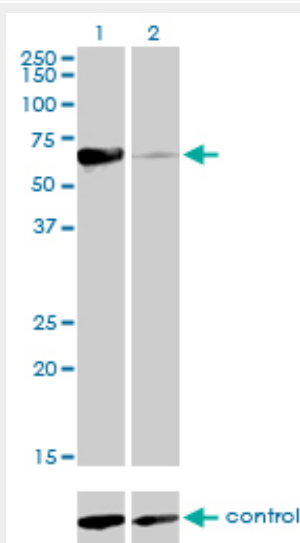
NR1D2 monoclonal antibody (M01), clone 1G2 Western Blot analysis of NR1D2 expression in Hela (Cat # AT3095a)



Western Blot analysis of NR1D2 expression in transfected 293T cell line by NR1D2 monoclonal antibody (M01), clone 1G2.

Lane 1: NR1D2 transfected lysate(64.7 KDa).

Lane 2: Non-transfected lysate.



Detection limit for recombinant GST tagged NR1D2 is approximately 0.03ng/ml as a capture antibody.

NR1D2 Antibody (monoclonal) (M01) - Background

This gene encodes a member of the nuclear hormone receptor family, specifically the NR1 subfamily of receptors. The encoded protein functions as a transcriptional repressor and may play a role in circadian rhythms and carbohydrate and lipid metabolism. Alternatively spliced transcript variants have been described.

NR1D2 Antibody (monoclonal) (M01) - References

Nuclear receptor rev-erb- α circadian gene variants and lithium carbonate prophylaxis in bipolar affective disorder. Campos-de-Sousa S, et al. J Biol Rhythms, 2010 Apr. PMID 20348464. Redundant function of REV-ERB α and β and non-essential role for Bmal1 cycling

in transcriptional regulation of intracellular circadian rhythms. Liu AC, et al. PLoS Genet, 2008 Feb 29. PMID 18454201. Nuclear hormone receptors for heme: REV-ERBalpha and REV-ERBbeta are ligand-regulated components of the mammalian clock. Burris TP. Mol Endocrinol, 2008 Jul. PMID 18218725. Identification of heme as the ligand for the orphan nuclear receptors REV-ERBalpha and REV-ERBbeta. Raghuram S, et al. Nat Struct Mol Biol, 2007 Dec. PMID 18037887. The orphan nuclear receptor Rev-erbbeta recruits Tip60 and HDAC1 to regulate apolipoprotein CIII promoter. Wang J, et al. Biochim Biophys Acta, 2008 Feb. PMID 17996965.