

## NR2E1 Antibody (monoclonal) (M06)

Mouse monoclonal antibody raised against a partial recombinant NR2E1.

Catalog # AT3102a

### Specification

---

#### NR2E1 Antibody (monoclonal) (M06) - Product Information

Application	IF
Primary Accession	<a href="#">O9Y466</a>
Other Accession	<a href="#">NM_003269</a>
Reactivity	Human
Host	mouse
Clonality	Monoclonal
Isotype	IgG2a Kappa
Calculated MW	42589

#### NR2E1 Antibody (monoclonal) (M06) - Additional Information

Gene ID 7101

##### Other Names

Nuclear receptor subfamily 2 group E member 1, Nuclear receptor TLX, Protein tailless homolog, TII, hTII, NR2E1, TLX

##### Target/Specificity

NR2E1 (NP\_003260, 249 a.a. ~ 342 a.a) partial recombinant protein with GST tag. MW of the GST tag alone is 26 KDa.

##### Format

Clear, colorless solution in phosphate buffered saline, pH 7.2 .

##### Storage

Store at -20°C or lower. Aliquot to avoid repeated freezing and thawing.

##### Precautions

NR2E1 Antibody (monoclonal) (M06) is for research use only and not for use in diagnostic or therapeutic procedures.

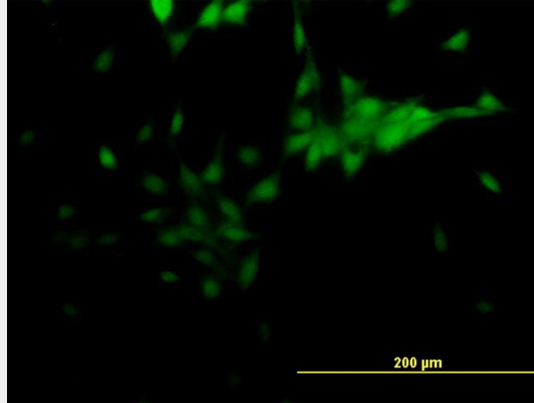
#### NR2E1 Antibody (monoclonal) (M06) - Protocols

Provided below are standard protocols that you may find useful for product applications.

- [Western Blot](#)
- [Blocking Peptides](#)
- [Dot Blot](#)
- [Immunohistochemistry](#)
- [Immunofluorescence](#)
- [Immunoprecipitation](#)

- [Flow Cytometry](#)
- [Cell Culture](#)

#### **NR2E1 Antibody (monoclonal) (M06) - Images**



Immunofluorescence of monoclonal antibody to NR2E1 on NIH/3T3 cell. [antibody concentration 10 ug/ml]

#### **NR2E1 Antibody (monoclonal) (M06) - References**

The nuclear receptor tailless induces long-term neural stem cell expansion and brain tumor initiation. Liu HK, et al. *Genes Dev*, 2010 Apr 1. PMID 20360385. Transcriptional activation of NAD<sup>+</sup>-dependent protein deacetylase SIRT1 by nuclear receptor TLX. Iwahara N, et al. *Biochem Biophys Res Commun*, 2009 Sep 4. PMID 19555662. A common variant in DRD3 receptor is associated with autism spectrum disorder. de Krom M, et al. *Biol Psychiatry*, 2009 Apr 1. PMID 19058789. Transrepressive function of TLX requires the histone demethylase LSD1. Yokoyama A, et al. *Mol Cell Biol*, 2008 Jun. PMID 18391013. Initial association of NR2E1 with bipolar disorder and identification of candidate mutations in bipolar disorder, schizophrenia, and aggression through resequencing. Kumar RA, et al. *Am J Med Genet B Neuropsychiatr Genet*, 2008 Sep 5. PMID 18205168.