

NRF1 Antibody (monoclonal) (M01)**Mouse monoclonal antibody raised against a partial recombinant NRF1.****Catalog # AT3114a****Specification**

NRF1 Antibody (monoclonal) (M01) - Product Information

Application	WB, IHC, E
Primary Accession	Q16656
Other Accession	NM_005011
Reactivity	Human
Host	Mouse
Clonality	Monoclonal
Isotype	IgG1 Kappa
Calculated MW	53541

NRF1 Antibody (monoclonal) (M01) - Additional Information**Gene ID** 4899**Other Names**

Nuclear respiratory factor 1, NRF-1, Alpha palindromic-binding protein, Alpha-pal, NRF1

Target/Specificity

NRF1 (NP_005002, 201 a.a. ~ 285 a.a) partial recombinant protein with GST tag. MW of the GST tag alone is 26 KDa.

Dilution

WB~~1:500~1000

IHC~~1:100~500

E~~N/A

Format

Clear, colorless solution in phosphate buffered saline, pH 7.2 .

Storage

Store at -20°C or lower. Aliquot to avoid repeated freezing and thawing.

Precautions

NRF1 Antibody (monoclonal) (M01) is for research use only and not for use in diagnostic or therapeutic procedures.

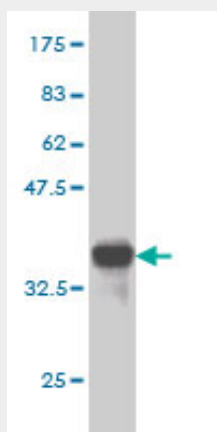
NRF1 Antibody (monoclonal) (M01) - Protocols

Provided below are standard protocols that you may find useful for product applications.

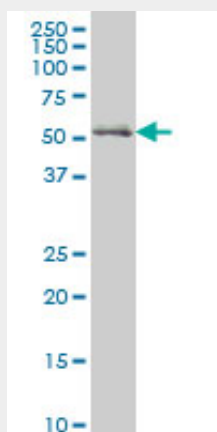
- [Western Blot](#)
- [Blocking Peptides](#)

- [Dot Blot](#)
- [Immunohistochemistry](#)
- [Immunofluorescence](#)
- [Immunoprecipitation](#)
- [Flow Cytometry](#)
- [Cell Culture](#)

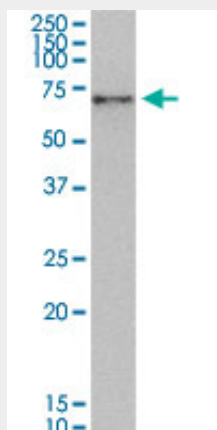
NRF1 Antibody (monoclonal) (M01) - Images



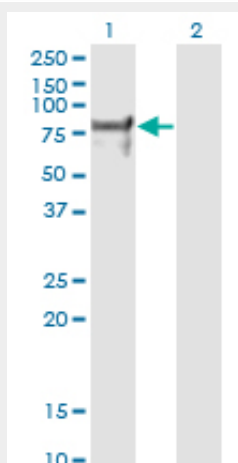
Antibody Reactive Against Recombinant Protein. Western Blot detection against Immunogen (35.09 kDa) .



NRF1 monoclonal antibody (M01), clone 2F9. Western Blot analysis of NRF1 expression in human Skeletal muscle.



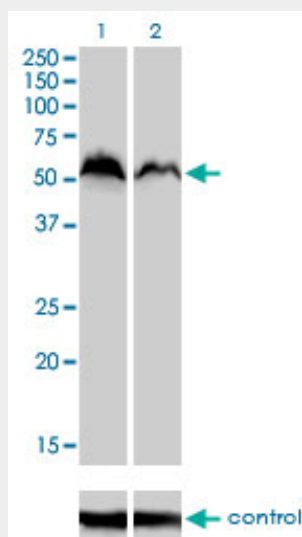
NRF1 monoclonal antibody (M01), clone 2F9. Western Blot analysis of NRF1 expression in HeLa.



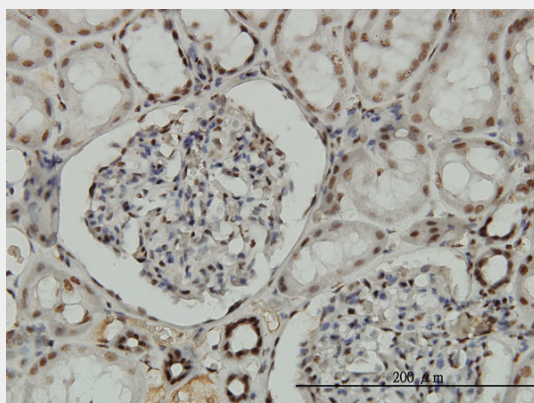
Western Blot analysis of NRF1 expression in transfected 293T cell line by NRF1 monoclonal antibody (M01), clone 2F9.

Lane 1: NRF1 transfected lysate (Predicted MW: 55.7 kDa).

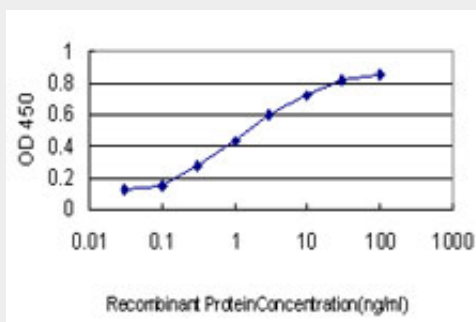
Lane 2: Non-transfected lysate.



Western blot analysis of NRF1 over-expressed 293 cell line, cotransfected with NRF1 Validated Chimera RNAi (Cat # AT3114a)



Immunoperoxidase of monoclonal antibody to NRF1 on formalin-fixed paraffin-embedded human kidney. [antibody concentration 3 ug/ml]



Detection limit for recombinant GST tagged NRF1 is approximately 0.03ng/ml as a capture antibody.

NRF1 Antibody (monoclonal) (M01) - Background

This gene encodes a protein that homodimerizes and functions as a transcription factor which activates the expression of some key metabolic genes regulating cellular growth and nuclear genes required for respiration, heme biosynthesis, and mitochondrial DNA transcription and replication. The protein has also been associated with the regulation of neurite outgrowth. Alternate transcriptional splice variants, which encode the same protein, have been characterized. Additional variants encoding different protein isoforms have been described but they have not been fully characterized. Confusion has occurred in bibliographic databases due to the shared symbol of NRF1 for this gene and for nuclear factor (erythroid-derived 2)-like 1 which has an official symbol of NFE2L1.

NRF1 Antibody (monoclonal) (M01) - References

1. Decreased expression of BRCA1 in SK-BR-3 cells is the result of aberrant activation of the GABP Beta promoter by an NRF-1-containing complex. Thompson C, Macdonald G, Mueller CR. Mol Cancer. 2011 May 24;10(1):62. [Epub ahead of print]